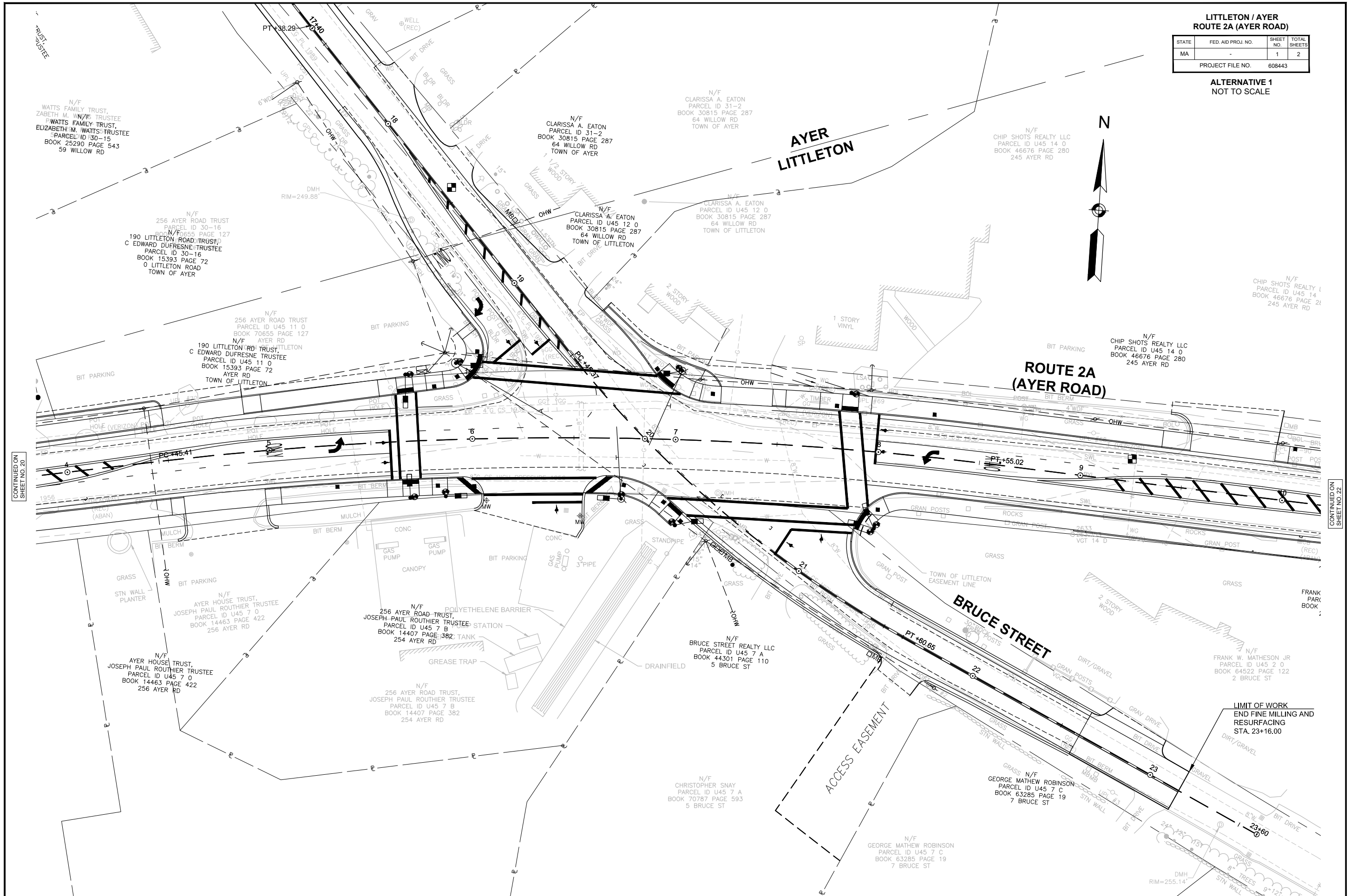


LITTLETON / AYER
ROUTE 2A (AYER ROAD)

STATE	FED. AID PROJ. NO.	SHEET NO.	TOTAL SHEETS
MA	-	1	2
PROJECT FILE NO.		608443	

ALTERNATIVE 1
NOT TO SCALE



CONTINUED ON
SHEET NO. 20

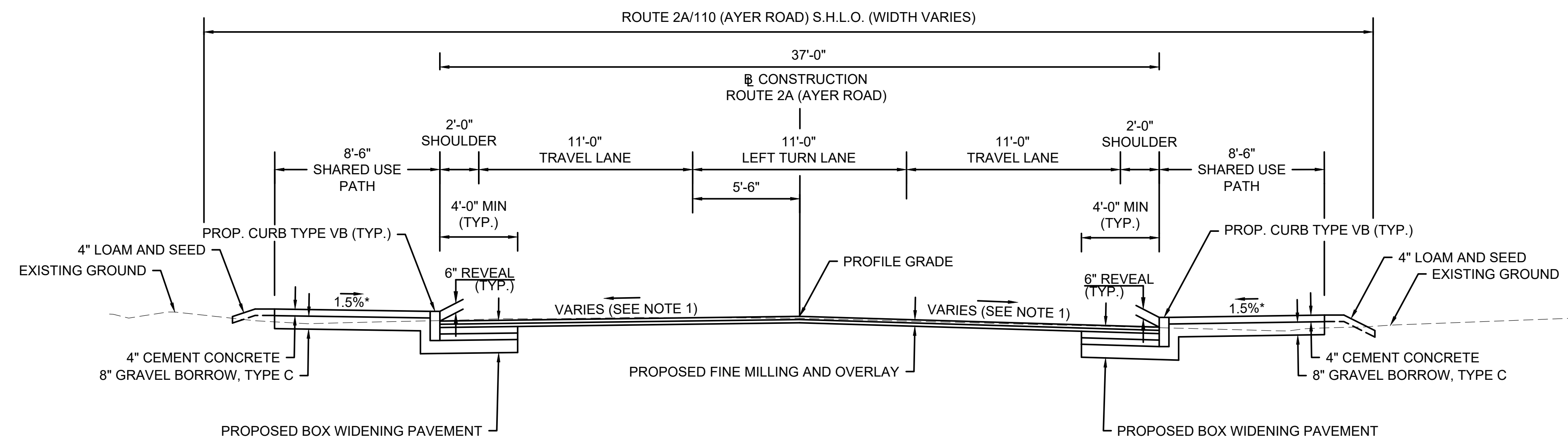
CONTINUED ON
SHEET NO. 22

LIMIT OF WORK
END FINE MILLING AND
RESURFACING
STA. 23+16.00

LITTLETON/AYER
ROUTE 2A (AYER ROAD)

STATE	FED. AID PROJ. NO.	SHEET NO.	TOTAL SHEETS
MA	-	5	57
PROJECT FILE NO.		608443	

TYPICAL SECTIONS (1 OF 2)



* TOLERANCE FOR CONSTRUCTION = ±0.5%
TYPICAL ROUTE 2A/110 (AYER ROAD) SECTION
STA. 3+50.00 - STA. 9+90.00
SCALE 1"=4'

PAVEMENT NOTES:

PROPOSED BOX WIDENING PAVEMENT

- PAVEMENT:** 2" SUPERPAVE SURFACE COURSE 12.5 (SSC-12.5) OVER ASPHALT EMULSION FOR TACK COAT RS-1H OVER 2.25" SUPERPAVE INTERMEDIATE COURSE 19.0 (SIC-19.0) OVER ASPHALT EMULSION FOR TACK COAT RS-1H OVER
- BASE:** 4" SUPERPAVE BASE COURSE 37.5 (SBC-37.5)
- SUBBASE:** 4" DENSE GRADED CRUSHED STONE OVER EXISTING SUBBASE MEETING MATERIAL SPECIFICATION M1.03.0 GRAVEL BORROW, TYPE B OR 8" GRAVEL BORROW, TYPE B

PROPOSED FINE MILLING AND OVERLAY

- PAVEMENT FINE MILLING:** 3" VARIABLE PAVEMENT FINE MILLING
- SURFACE:** 2" SUPERPAVE SURFACE COURSE 12.5 (SSC-12.5) OVER ASPHALT EMULSION FOR TACK COAT RS-1H OVER 2.25" SUPERPAVE INTERMEDIATE COURSE 19.0 (SIC-19.0) OVER ASPHALT EMULSION FOR TACK COAT RS-1H

CEM. CONC. SHARED USE PATH

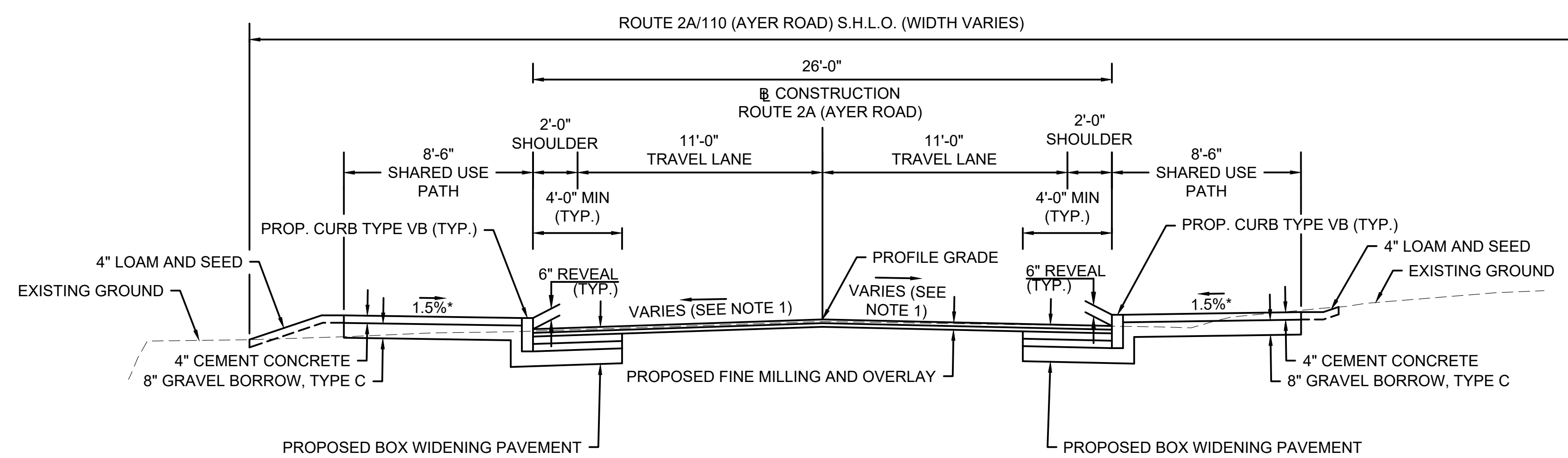
- TOP COURSE:** 4" CEMENT CONCRETE
- BASE:** 8" GRAVEL BORROW, TYPE C

CEM. CONC. DRIVEWAY

- TOP COURSE:** 6" CEMENT CONCRETE
- BASE:** 8" GRAVEL BORROW, TYPE C

NOTES:

- PAVEMENT MILLING TO MATCH EXISTING CROSS SLOPE OR ESTABLISH 2% CROSS SLOPE WHERE POSSIBLE AS SHOWN ON THE CROSS SECTIONS.
- ALL HMA SHALL BE PER SECTION 450 HOT MIX ASPHALT AND SECTION M3 ASPHALTIC MATERIALS.

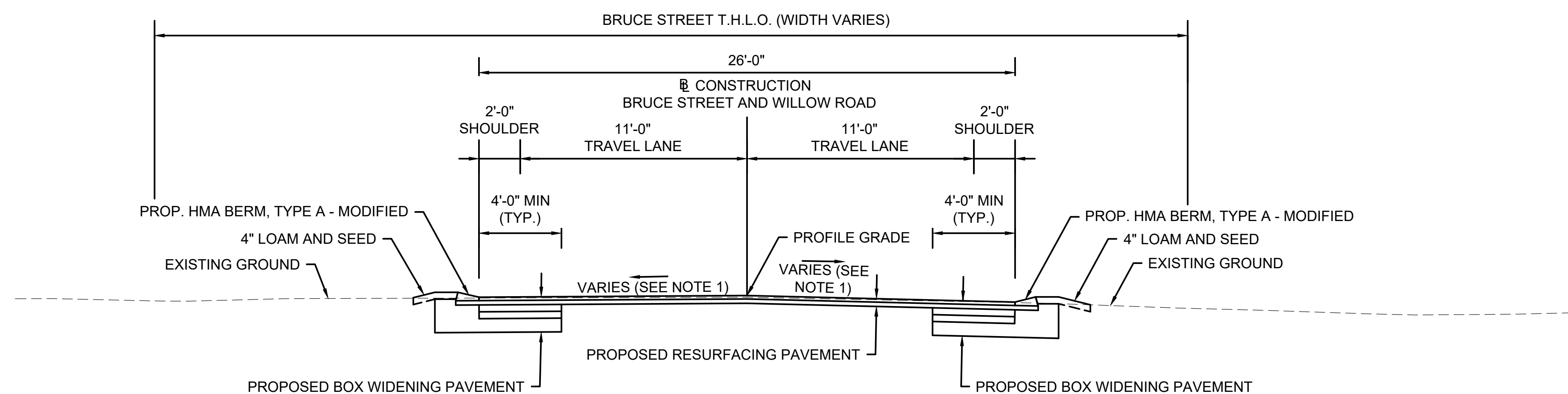


* TOLERANCE FOR CONSTRUCTION = ±0.5%
TYPICAL ROUTE 2A/110 (AYER ROAD) SECTION
STA. 1+25.00 - STA. 3+50.00
STA. 9+90.00 - STA. 15+25.00
SCALE 1"=4'

LITTLETON/AYER
ROUTE 2A (AYER ROAD)

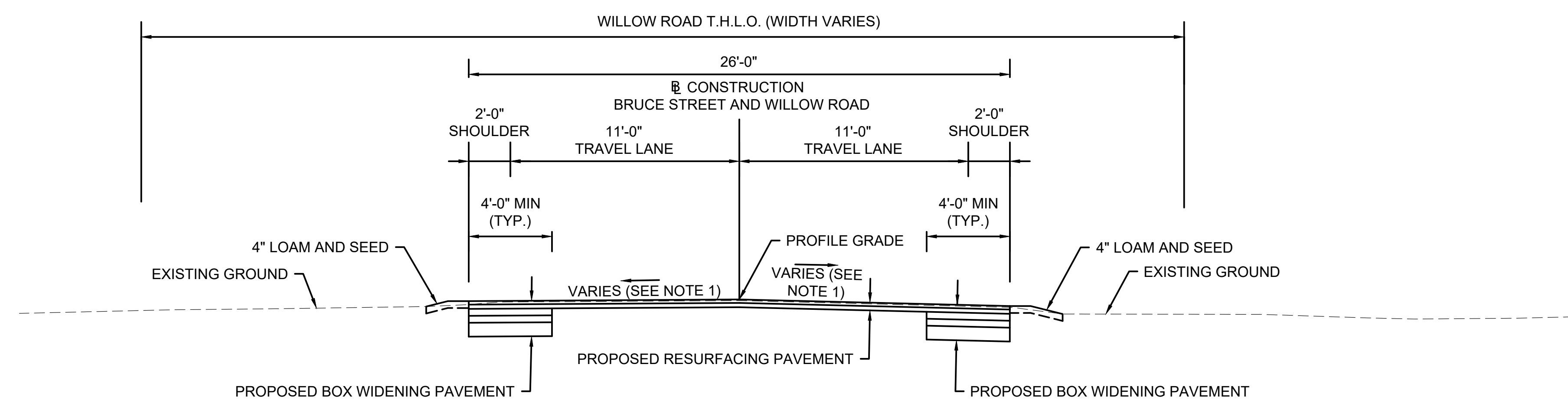
STATE	FED. AID PROJ. NO.	SHEET NO.	TOTAL SHEETS
MA	-	6	57
PROJECT FILE NO.		608443	

TYPICAL SECTIONS (2 OF 2)



TYPICAL BRUCE STREET SECTION

STA. 20+30.00 - STA. 23+16.00
SCALE 1"=4'



TYPICAL WILLOW ROAD SECTION

STA. 14+90.00 - STA. 19+70.00
SCALE 1"=4'