

THE COMMONWEALTH OF MASSACHUSETTS HIGHWAY DEPARTMENT

RECONSTRUCTION OF GOLDSMITH STREET IN THE TOWN OF LITTLETON MIDDLESEX COUNTY

FEDERAL AID PROJECT NO. STP-001S(839)X

LITTLETON
GOLDSMITH STREET

STATE	FED. AID PROJ. NO.	FISCAL YEAR	SHEET NO.	TOTAL SHEETS
MASS	STP-001S(839)X	2008	1	117

PROJECT FILE NO. 603540

TITLE SHEET AND INDEX

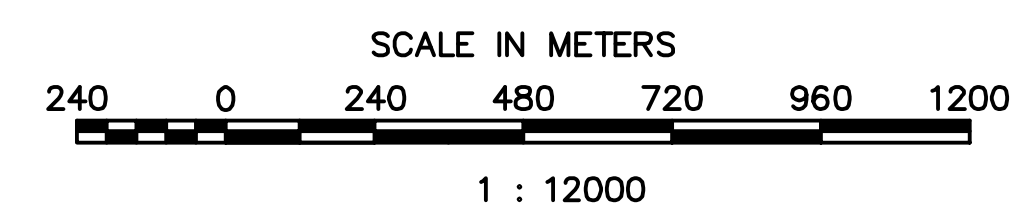
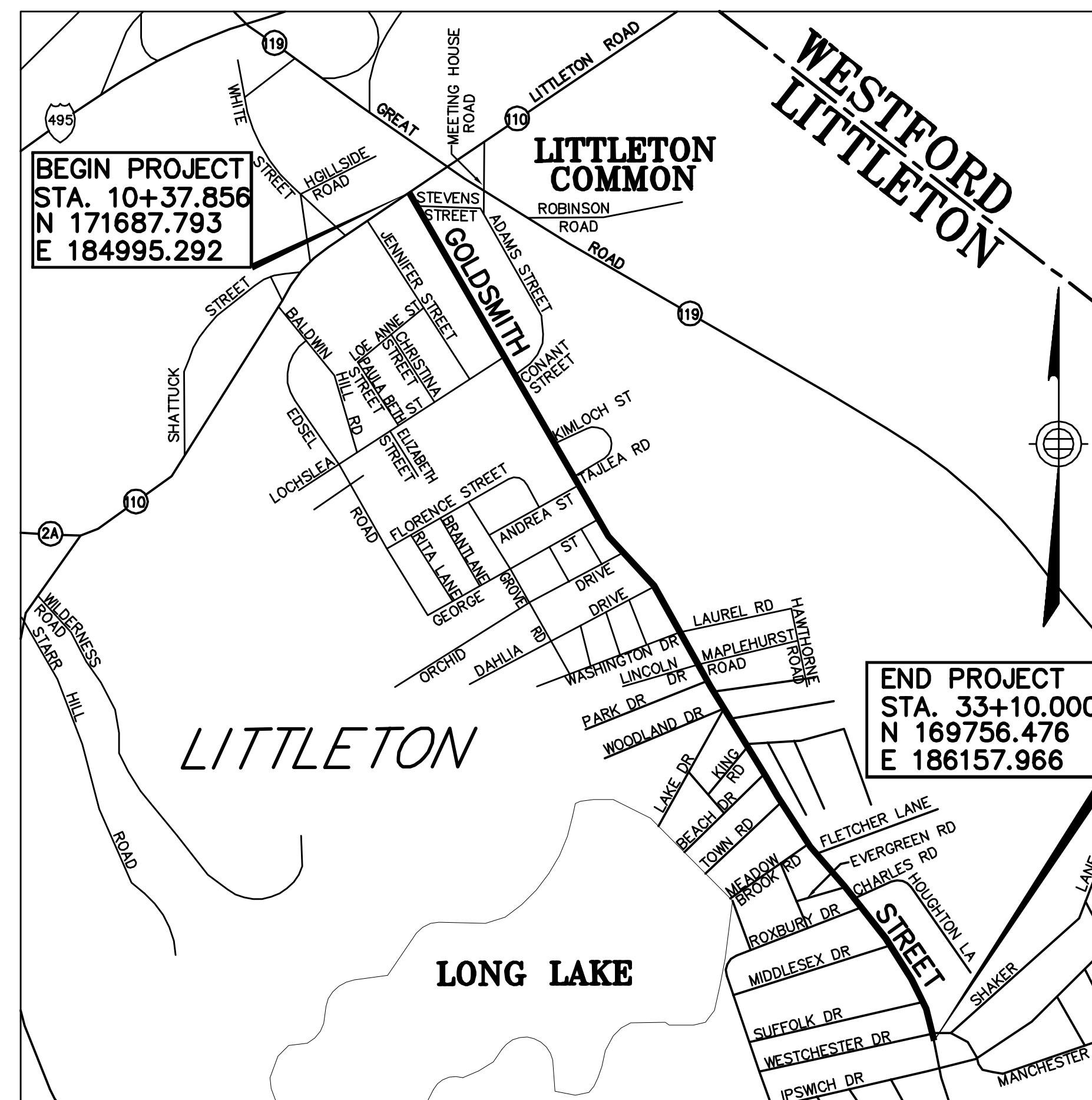
THE MASSACHUSETTS HIGHWAY DEPARTMENT 1995 METRIC EDITION STANDARD SPECIFICATIONS FOR HIGHWAYS AND BRIDGES AND THE METRIC SUPPLEMENTAL SPECIFICATIONS DATED JUNE 6, 2006; THE 1996 CONSTRUCTION AND TRAFFIC STANDARD DETAILS AND THE SUPPLEMENTAL DRAWINGS DATED APRIL 2003; THE 2003 MANUAL ON UNIFORM TRAFFIC CONTROL DEVICES WITH REVISIONS; THE 1990 STANDARD DRAWINGS FOR SIGNS AND SUPPORTS; THE 1968 STANDARD DRAWINGS FOR TRAFFIC SIGNALS AND HIGHWAY LIGHTING; THE AMERICAN STANDARD FOR NURSERY STOCK (ANSI Z-60.1-2004), AS AMENDED, SHALL GOVERN.

INDEX

SHEET NO.	DESCRIPTION
1	TITLE SHEET & INDEX
2	LEGEND & GENERAL NOTES
3	TYPICAL SECTIONS & PAVEMENT NOTES
4-17	CONSTRUCTION PLANS
18-31	PROFILES
32-45	ALIGNMENT & GRADING PLANS
46-49	SURVEY CONTROL PLANS
50-53	SIGNING & PAVEMENT MARKINGS
54-55	SIGN SUMMARY
56-57	TRAFFIC MANAGEMENT PLANS
58-59	CONSTRUCTION DETAILS
60-61	WHEELCHAIR RAMP DETAILS
62	DRIVEWAY RAMP DETAILS
63	LANDSCAPING DETAILS
64-117	CROSS SECTIONS

DESIGN DESIGNATION

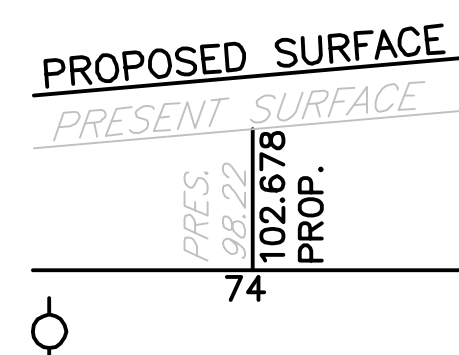
DESIGN YEAR	=	2022
DESIGN SPEED	=	70 Km/H
ADT (1998)	=	4800
ADT (2022)	=	6100
K	=	9.7%
D	=	51.3%
T (PEAK HOUR)	=	1%
DHV	=	593
DDHV	=	304
FUNCTIONAL CLASSIFICATION	=	RURAL MAJOR COLLECTOR



NOTE
LENGTH OF PROJECT = 2300m = 2.300km

CONVENTIONAL SIGNS

COUNTY, CITY, OR TOWN BOUNDARY	---
COUNTY, CITY, OR TOWN SIDE LINE	----
FENCE LINE	-x-x-x-x-x-
BASE LINE OR SURVEY LINE	-----
RIGHT OF WAY LINE	-----
CULVERT	-----



ELEVATIONS -----
POLE -----

MASS HIGHWAY

MASSACHUSETTS
HIGHWAY DEPARTMENT

RECOMMENDED FOR APPROVAL

CHIEF ENGINEER _____ Date _____

APPROVED

MHD COMMISSIONER _____ Date _____

PREPARED BY

SEA

SEA CONSULTANTS INC.
Scientists/Engineers/Architects

DEPARTMENT OF TRANSPORTATION
FEDERAL HIGHWAY ADMINISTRATION
APPROVED

DIVISION ADMINISTRATOR _____ Date _____