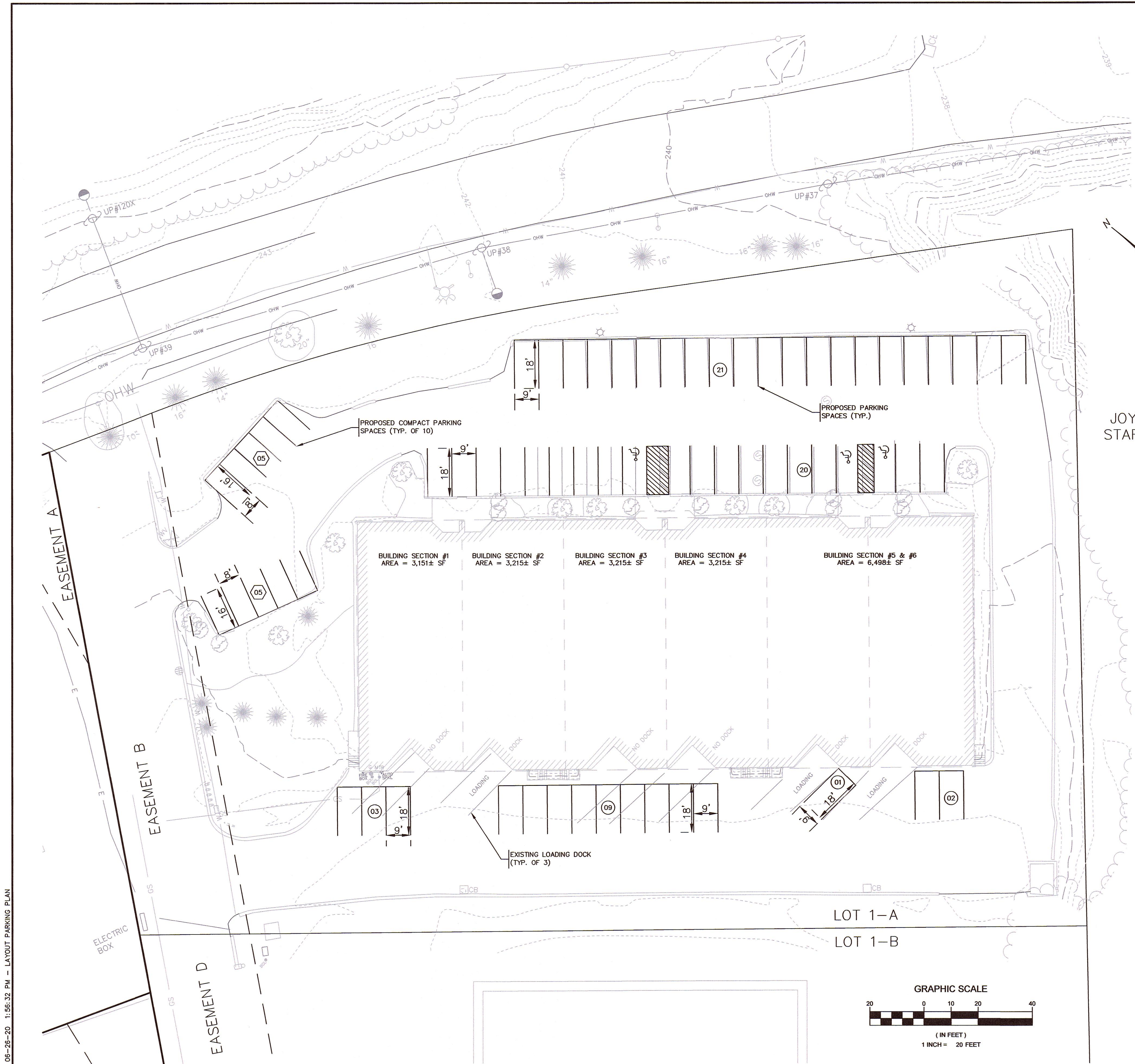
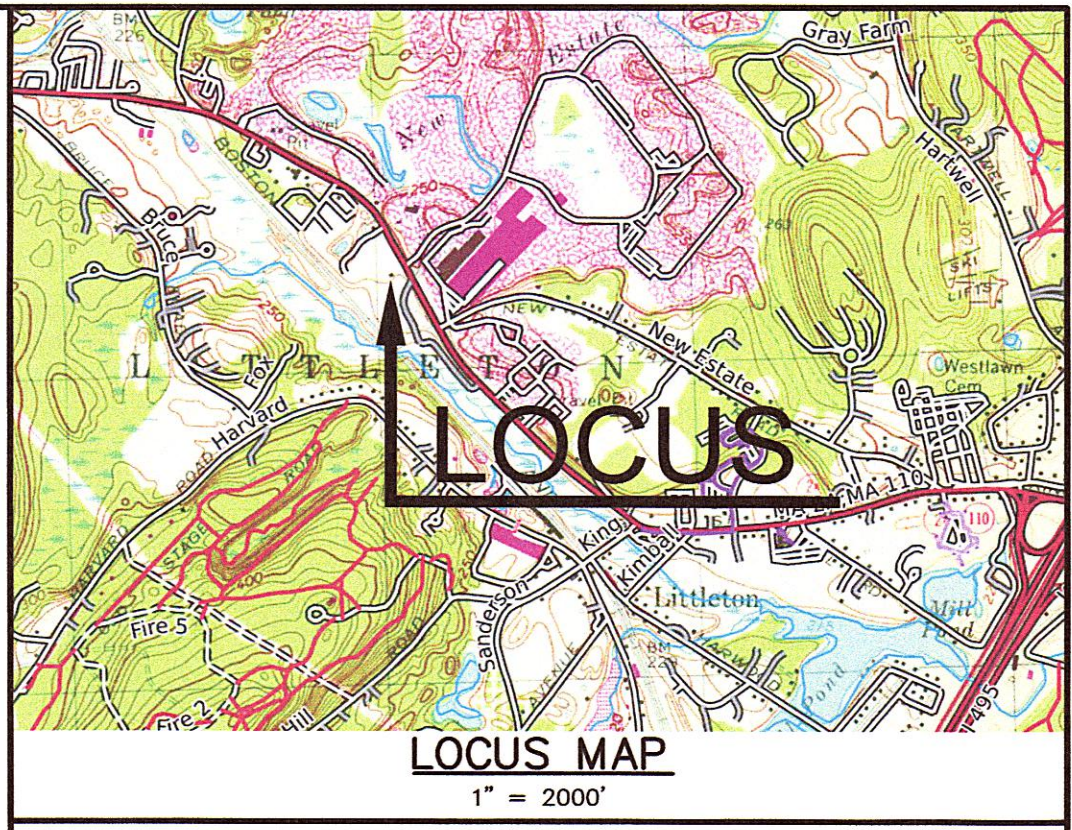


P:\20-0000\201039\DWG\PERMIT\SITE.DWG 06-26-20 1:56:32 PM - LAYOUT PARKING PLAN



N/F  
JOYCE CANTINO TRUSTEE  
STAFRAJOY REALTY TRUST

Parking Computations					
Building Section	Use	Formula	Variable	Parking Spaces Required	Parking Spaces Provided
1	Office/Warehouse	1 Space / 1.25 Employees	4	4	---
2	Office/Warehouse	1 Space / 1.25 Employees	4	4	---
3	Lab	1 Space / 1.25 Employees	5	4	---
4	Retail	1 Space / 150 sf	2,143	15	---
	Office	1 Space / 250 sf	1,072	5	---
5 & 6	Retail	1 Space / 150 sf	3,924	20	---
	Store Room	1 Space / 1.25 Employees	6	5	---
Total	---	---	---	57	66



**ELEVATION DATUM**  
DATUM: NAVD 1988

**SITE DATA:**  
LOT AREA: LOT 1A = 83,970± SF  
ZONING DISTRICT: INDUSTRIAL-B  
OVERLAY DISTRICT: WATER RESOURCE

**ASSESSORS REFERENCE:**  
OWNERS:  
ATHENA ASSETS, LLC. (BUILDING SECTIONS 1-4) &  
J&V KOUYOUMJIAN PARTNERS (BUILDING SECTIONS 5-6)  
PARCEL ID: R-22 1-1

**EXISTING CONDITIONS NOTES:**  
1. EXISTING CONDITION INFORMATION BASED ON AN ON-THE-GROUND TOPOGRAPHIC AND BOUNDARY SURVEY PERFORMED BY GOLDSMITH, PREST & RINGWALL, INC. DATED JUNE, 2020.

**DRAWING ISSUED FOR:**  
☐ CONCEPT ☐ CONSTRUCTION  
☒ PERMIT ☐ CONSTRUCTION

THIS DRAWING MAY NOT SHOW SITES FOR CONSTRUCTION DETAILS AND SPECIFICATIONS FOR CONSTRUCTION IMPROVEMENTS, AND NOT IDEAS FOR ALL CONSTRUCTION AREAS. CONTRACTOR SHALL VERIFY ALL INFORMATION. THE FOLLOWING ARE EXCLUDED FROM THE PROFESSIONAL ENGINEER'S RESPONSIBILITY: ALL BOUNDARY INFORMATION; LOCATION OF EXISTING UTILITIES, TOPOGRAPHY OR SIMILAR FEATURES; DESIGN OF CONSTRUCTION EQUIPMENT. SEE EXISTING CONDITION NOTES.

NO.	DATE	BY	APP.	REVISION DESCRIPTION
-----	------	----	------	----------------------

**GPR**  
Engineering Solutions  
for Land & Structures

GOLDSMITH, PREST & RINGWALL, INC.  
39 MAIN STREET, SUITE 301, AYER, MA 01432  
CIVIL ENGINEERING • LAND SURVEYING • LAND PLANNING  
VOICE: 978.772.1590 FAX: 978.772.1591  
www.gpr-inc.com

COMMERCIAL DEVELOPMENT  
PARKING PLAN  
SITE LAYOUT PLAN  
  
160 AYER ROAD  
LITTLETON, MA 01460

PREPARED FOR:  
ATHENA ASSETS, LLC.  
160 AYER RD, STE 1  
LITTLETON, MA 01460

2023 © COPYRIGHT GOLDSMITH, PREST & RINGWALL, INC.