

Section 8
Goals and Objectives

8.0 GOALS AND OBJECTIVES

The following general goals are those identified in "Community Goals" (Section 6), and are followed by objectives that will drive the development of more specific recommendations in the "Five-Year Action Plan" (Section 9). These goals and objectives were composed on the basis of the "Analysis of Needs" (Section 7), and input received from the Open Space and Recreation Plan Implementation Committee and the public workshop.

Goals	Objectives
1. Promote the preservation of Littleton's important water resources.	<ul style="list-style-type: none"> a) Promote the preservation of ground water resources and wetlands. b) Improve and maintain surface water quality. c) Coordinate efforts with Littleton Water Dept.
2. Promote the preservation of the important land resources in Littleton.	<ul style="list-style-type: none"> a) Preserve lands that support agricultural uses. b) Protect lands of scenic value. c) Preserve land for historical and natural purposes including unique and geologically significant features. d) Preserve lands to maintain aquifer and surface water health. e) Increase amount of permanently protected Open Space. f) Ensure cooperation of local and regional conservation organizations.
3. Provide recreational opportunities for all Littleton residents.	<ul style="list-style-type: none"> a) Update facilities to meet ADA requirements. b) Explore special opportunities for recreational facilities. c) Provide recreation opportunities for younger residents.
4. Promote the efficient management and maintenance of the open space and recreation areas of Littleton.	<ul style="list-style-type: none"> a) Implement strategies that will facilitate the permanent care of recreation and conservation areas. b) Continue to modify the program for the maintenance and management of open space and recreation areas in Littleton in response to changing conditions. c) Develop a management plan for invasive species.

5. Promote opportunities for the linkage of Littleton's open space.	<ul style="list-style-type: none"> a) Work to link public and private open space and recreation areas to each other. b) Work with neighboring towns to link adjacent open space and recreation areas. c) Create larger areas of contiguous open space in ecologically sensitive areas.
6. Increase educational awareness regarding resources.	<ul style="list-style-type: none"> a) Educate the public about available recreational, cultural and natural resources. b) Instruct the public on non-pollutive land and water practices.
7. Use regulations to balance development with the preservation of open space.	<ul style="list-style-type: none"> a) Modify or create bylaws to further open space preservation and prevent environmental degradation. b) Lessen environmental impact of development through stricter wetlands and erosion control by-laws and certification of vernal pools. c) Establish permanent committee to implement and oversee conservation restrictions, easements and management.
8. Promote preservation of Littleton's community character.	<ul style="list-style-type: none"> a) Protect the Town Common. b) Preserve large tracts of land. c) Work with state and local officials to establish more funds for land purchases. d) Work to acquire lands of scenic value. e) Implement strategies to maintain the rural character of Rte. 119 and Rte.2A.
9. Promote the protection of Agricultural Lands within Littleton.	<ul style="list-style-type: none"> a) Protect active agricultural operations in Town and undeveloped land suitable for farming. b) Work with appropriate authorities and stakeholders to ensure the viability of existing farming operations.

Section 9
Five-Year Action Plan

9.0 FIVE-YEAR ACTION PLAN

This Action Plan builds on the "Goals and Objectives" (Section 8) by developing specific strategies to be completed by responsible parties, and assigning each a time frame in which to be completed in. The actions listed below are essentially steps that need to be taken to accomplish the outlined objectives, developed through input received through the efforts of the Open Space and Recreation Plan Implementation Committee.

Figure 10 will illustrate the "Five-Year Action Plan" elements that are geographically specific.

The Five Year Action Program is designed to implement Littleton's Open Space and Recreation Plan. The Action Plan directly addresses the recreation and conservation deficiencies identified in the analysis of community needs. The plan elements are classified into one of three categories:

Expenditure strategies involve direct revenue outlays. Expenditure items include land acquisition and development costs, equipment purchases, and miscellaneous expenses.

In the years since Proposition 2 1/2, major constraints on recreation and conservation funding have been noted in Littleton just as in many other Massachusetts communities. The Town's Conservation Fund had traditionally been the funding source for land acquisition. Many land acquisitions in the past five years, have been the result of gift or negotiated donation, such as those under the Open Space Development bylaw, as well as use of State funds from the Open Space Bond Bill and Town Meeting funding. The Land Acquisition Fund has traditionally been increased at annual Town Meeting, as fiscal constraints allow. The cellular communications leases that are on Town property have been designated to be used for land preservation purposes.

Management strategies are those items that utilize administrative skills and efforts to manage existing resources more effectively and to develop new programs to address recreation and conservation needs.

Regulatory strategies involve better administration of existing bylaws, revision and amendment of prevailing regulatory schemes, and preparation and adoption of new control strategies.

The Action Plan proposes the acquisition of sites the Town has already identified as valuable open space or resource areas. However, should new sites be identified in the future, the Town should take action to so protect those areas. Further, it should be noted that the timetable set out for implementation of the Action Plan is subject to change. Unexpected opportunities may make it timely for actions slated for year 4 (for example) to be taken in year 2 or visa versa. The Action Plan has been designed to respond to changing local conditions, and sets out the minimum, rather than the maximum, efforts the Town wishes to take to pursue open space objectives over the next five years.

A. SPENDING

A1. Strengthen the Town's financial commitment to open space and recreation.

A1.1 Gain funding for professional grantsman.

The Town should have a professional capacity for securing grant support for open space and recreation. How best to do that needs exploration. Possibilities include a "circuit-rider" shared with other towns, or a private entrepreneur paid on a commission based on grants actually obtained.

A1.2 Explore new funding mechanisms.

Evidence from the past decade demonstrates that traditional funding sources aren't adequate for these purposes. Accordingly, innovative alternatives such as these should be explored:

- Land Bank funded by RE transfer tax;
- Impact fees;
- User fees;
- Intermodal Surface Transportation Efficiency Act (ISTEA) funds;
- Joint efforts;
- An open space bond issue; and
- MA Division of Conservation Services Urban Self-Help funds.

To undertake the exploration, a Task Force should be convened by the Selectmen, to include representation from the Selectmen, interested Town agencies such as the Conservation Commission, Open Space and Recreation Plan Implementation Committee, non-profit groups such as the Littleton Conservation Trust, and potential private participants, including major land owners, financial institutions, and the media. The target should be a program in place for the annual town meeting.

A2. Fund needed programs.

All of these are competing for funding in a context of limited financial resources.

A2.1 Acquire interests in environmentally sensitive or unique land threatened by development. Promote a regional land protection plan.

A2.2 Acquire interests in land that preserve Littleton's rural character and agricultural history.

A2.3 Support Littleton Water Dept. in acquiring additional well sites and protecting water resources.

- A2.4 Maintain funding of the local share of lake clean-up programs
- A2.5 Fund other recreation additions and improvements including the improvements for handicapped accessibility outlined in the *Section 504 Self-Evaluation Form* (attached).
- A2.6 Give conservation status to parcels of municipally held land, in order to ensure permanent protection.

B. REGULATION

- B1. Clarify the application of existing controls before reaching for new authority.
 - B1.1 Put explicit environmental, cultural, agricultural protection criteria into existing Town controls. For example, Zoning Section 173-1 Purpose speaks only broadly of "historical rural character and its agricultural open land", making no mention of other environmental resource-related purposes. Section 173-7c Criteria for Special Permits makes no mention of environmental, cultural, or agricultural resources or values as a basis for decisions, citing only "nuisance, hazard or congestion". Section 173-18 Design Requirements for Site Plan Review makes minimization of major topographic changes or removal of existing trees a requirement, but no other environmental or cultural concerns are mentioned. Section 173-100 Open Space Community is newer and clearer about the Town's environmental and cultural resources, and could serve as a beginning model for how the Site Plan Review standards, Special Permit criteria, and Purpose might be made more explicit in reflecting the community's deep concern about its historic culture and fragile environment.
 - B1.2 Clarify Scenic Road procedures and criteria. Designations of scenic roads have been made, but there is a lack of clarity about what is expected of applicants in encountering those laws.
- B2. Take a "partnership" approach to regulation.
 - B2.1 Build more incentive into Open Space Development zoning provisions. Given Littleton's absence of public sewerage and the demands of Title 5, development is difficult on the relatively small lots that are the key to preservation under OSD zoning. Some form of incentive would make use of those optional regulations more attractive to developers.
 - B2.2 Work with landowners to find "win/win" solutions for both the Town and owner. Rather than passively waiting for proposals, in this effort the Town would actively assist in exploring how to both meet landowner interests and open space and recreation interests of the Town¹.

¹ This kind of process has been termed "Creative Land Development" in a book of that title written by Robert Lemire of Lincoln, MA.

C. MANAGEMENT

- C1. Establish an Agricultural Incentive District under Chapter 40L, MGL. This was proposed in the 1997 Plan. A decade of experience elsewhere supports the appropriateness of action.
- C2. Develop a non-regulatory historic district program. There is real support for the protection of historic resources, but reluctance to employ police-power regulation as the means of protecting them. Information, education, financial assistance, and exhortation can all assist, especially given a coherent strategy for protection.
- C3. Organize for Environmental Education. There is wide support for the importance of environmental education, and the need for focused efforts if it is to be promoted. An environmental education committee, reaching outside of Town government for participants, should then explore a variety of initiatives for recruiting efforts. This could include exploration of community service and work study programs, such as the High School community service program.

FIVE-YEAR ACTION PROGRAM

Action	Agency	FY03	FY04	FY05	FY06	FY07
A. SPENDING PROPOSALS						
A1.1 Grantsman funding						
Explore town-wide or regional writer	Selectmen	X				
Seek funding	Selectmen	X				
	Selectmen	X	X	X	X	X
A1.2 Explore funding mechanisms support for OSRPIC expand funding increase funds to Land Acquisition account increase funds to cell tower accounts						
	Selectmen	X	X	X	X	X
	Selectmen	X	X	X	X	X
	Selectmen	X	X	X	X	X
	Selectmen	X	X	X	X	X
	Selectmen	X	X	X	X	X
A2.1 Acquire unique and sensitive lands linking parcels regional plan cooperate with area towns cooperate with land preservation organizations						
	CC/LCT/LWD	X	X	X	X	X
	CC/LCT/LWD	X	X	X	X	X
	CC/LCT/LWD	X	X	X	X	X
	CC/LCT/LWD	X	X	X	X	X
	CC/LCT/LWD	X	X	X	X	X
A2.2 Acquire lands of public interest farm land along Great Road farm land along Newtown Road farm land along Ayer Road & Bruce Street land adjacent to Fort Pond & Sarah Doublet Forest land bordered by Foster Street, Rt 2 & Boxboro Road land bordered by Wilderness Road adjacent to Long Lake land adjacent to Littleton Sportmen's Club						
	CC/LCT/LWD	X	X	X	X	X
	CC/LCT/LWD		as land becomes available			
	CC/LCT/LWD		as land becomes available			
	CC/LCT/LWD		as land becomes available			
	CC/LCT/LWD		as land becomes available			
	CC/LCT/LWD		as land becomes available			
	CC/LCT/LWD		as land becomes available			
A2.3 Acquire well site						
	LWD		as needed			
A2.4 Maintain funding for lakes restoration certify vernal pools						
	CLC	X	X	X	X	X
	CC	as lands are examined				

FIVE-YEAR ACTION PROGRAM

Action	Agency	FY03	FY04	FY05	FY06	FY07
A2.5 Fund other rec facilities	Park & Rec	X	X	X	X	X
improvements to 300 King Street	Park & Rec				X	
develop two new baseball fields	Park & Rec				X	
develop one new outdoor basketball court	Park & Rec					X
develop one new outdoor volleyball court	Park & Rec					X
A 2.6 Permanent protection for municipal land	Selectmen	X				
Morgan Land	Selectmen	X				
Town Forest	Selectmen	X				
Nagog Hill Orchard	Selectmen	X				
Littleton Common access improvements	DPW	X				
B. REGULATION PROPOSALS						
B1.1 Develop Wetland's Bylaw	Cons Comm	X				
B1.2 Develop Scenic Road rules	Planning Bd	X				
B2.1 Promote OSD incentives	Planning Bd	X	X	X	X	X
B2.2 "Partnership" w/landowners & developers	Planning Bd	X	X	X	X	X
C. MANAGEMENT PROPOSALS						
C1 Ag Incentive District	Planning Bd		X			
C2 Non-regulatory historic district	Hist Comm		X			
C3 Environmental Education	OSRPIC/LCT	X	X	X	X	X
Continue Land Stewardship Program	OSRPIC/LCT	X	X	X	X	X
Organize CR's & Easements in formation	OSRPIC/LCT	X	X	X	X	X
Routine monitoring & maintenance of lands	OSRPIC/LCT	X	X	X	X	X
Community Outreach Programs	OSRPIC/LCT	X	X	X	X	X
C4 Supervise re-write of Plan in '07	OSRPIC					X

Section 10
Public Comments

10.0 PUBLIC COMMENTS

Letters of review from State agencies and local groups follow.



COMMONWEALTH OF MASSACHUSETTS
EXECUTIVE OFFICE OF ENVIRONMENTAL AFFAIRS
Executive Office of ENVIRONMENTAL Affairs

251 CAUSEWAY STREET, SUITE 900, BOSTON, MA 02114

Tel.: 617-626-1000

Fax: 617-626-1181

RECEIVED

JAN 08 2003

ELLEN ROY
Secretary

BEALS AND THOMAS, INC.

January 6, 2003

MITT ROMNEY
Governor

KERRY HEALEY
Lt. Governor

Holly S. Johnson
Environmental Planner
Beals and Thomas, Inc.
144 Turnpike Road
Southborough, MA 01772-2104

Re: Open Space and Recreation Plan

Dear Ms. Johnson:

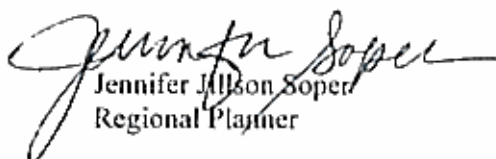
Thank you for submitting Littleton's draft Open Space and Recreation Plan to this office for review for compliance with the current Open Space and Recreation Plan Requirements. This plan has been conditionally approved through December 2007. Conditional approval will allow the town to participate in DCS grant rounds through December 2007, and a grant award may be offered to the town. However, no final grant payments will be made until the plan is completed.

Once the following tasks are done, the plan will receive final approval for a five-year period.

1. ADA/Section 504 – Enclosed is a copy of Appendix H for your use on future plans. Information on employment practices can be shortened considerably if the town's ADA coordinator will send a letter stating that the town's employment practices are consistent with the ADA.
2. Maps – Two required maps must still be submitted on Scenic Resources and Unique Environments, and Inventory of Open Space. Please consider working with Scott Costello at our MassGIS office, (617) 626-1076.

This plan is well underway and reflects the serious efforts made by everyone involved. The update section was particularly well done. Please call me at (617) 626-1015 if you have any questions or concerns, and congratulations!

Sincerely,


Jennifer Jillson Soper
Regional Planner

cc: Rita Biagioni, Littleton Open Space and Recreation Plan Implementation Committee
Littleton Board of Selectmen
Littleton Conservation Commission
Littleton Recreation Department



Metropolitan Area Planning Council

60 Temple Place, Boston, Massachusetts 02111 617-451-2770 fax 617-482-7185 www.mapc.org

Serving 101 cities and towns in metropolitan Boston

RECEIVED

DEC 19 2002

BEALS AND THOMAS, INC.

December 16, 2002

Holly S. Johnson, Environmental Planner
Beals and Thomas, Inc.
Reservoir Corporate Center
144 Turnpike Road (Route 9)
Southborough, MA 01772-2104

Dear Ms. Johnson:

The Metropolitan Area Planning Council has reviewed the draft Littleton Open Space and Recreation Plan Update, November 25, 2002. The plan is well-written and thorough and contains an excellent discussion of regional open space resources. I would like to offer the following comment:

MetroGreen - There should be a discussion of how the open space plan relates to MetroGreen, the land resources protection element of MAPC's regional development plan. I have enclosed a copy of MetroGreen for your use.

Thank you for the opportunity to review this plan.

Sincerely,

Joan Blaustein
Land Resources Planner

Cc: Joel Lerner, Division of Conservation Services
Ronald Caruso, MAPC Representative, Town of Littleton



PLANNING BOARD

P.O. Box 1305
Littleton, Massachusetts 01460

January 24, 2003

Mrs. Rita Biagioni, Chair
Open Space and Recreation Implementation Committee
Town Hall
Littleton, MA 01460

RE: Draft Open Space Plan – Littleton, MA

Dear Rita:

The Planning Board is pleased with the work the Open Space and Recreation Plan Committee has done in updating the Town's Open Space and Recreation Plan. This document makes good use of the mapping capabilities of the Littleton Electric Light and Water Department. This report provides a needed update to the Plan to reflect current conditions.

Thank you for the opportunity to review the Draft Open Space and Recreation Plan. We have no specific comments on the draft other than we are looking forward to the final version. It is clear that a lot of people spent their energies and efforts in getting this document to reflect the unique character of Littleton.

Sincerely,

A handwritten signature in cursive script that reads "Maren A. Toohill".

Maren A. Toohill
Planning Board Coordinator



CONSERVATION COMMISSION

POST OFFICE BOX 1031
LITTLETON, MASSACHUSETTS 01460

MEMO TO: Open Space and Recreation Plan Committee
FROM: Conservation Committee *Barbara Chapin*
DATE: January 17, 2003

RE: Comments on 2003 draft plan

Members of the Conservation Commission have reviewed the draft plan.

Your committee should be commended for the professional document you have produced. All sections are well researched and updated. Tables and maps are important aides to the understanding of the data.

However, the commission would be pleased if you could 'beef up' the mention of wetland bylaws. We are presently working toward the acceptance of a minimal bylaw in hopes that we can strengthen the regulations as time goes on. We believe it is important to protect the wetland areas especially as they impact our drinking water sources.

Again let us express our appreciation for the work of your committee



OFFICE OF THE
BOARD OF SELECTMEN

37 SHATTUCK STREET, P.O. BOX 1305
LITTLETON, MASSACHUSETTS 01460
(978) 952-2311

February 10, 2003

Ms. Jennifer J. Soper
Division of Conservation Services, EOE
251 Causeway Street, 9th Floor
Boston, MA 02114

RE: Littleton, MA Open Space and Recreation Plan Update

Dear Ms. Soper,

The Littleton Board of Selectmen are in receipt of the Open Space and Recreation Plan update prepared for the Town by Beals & Thomas, Inc. under the supervision of the Littleton Open Space and Recreation Plan Implementation Committee.

The Board concurs with the recommendations contained within the plan update and wishes to commend the work of both our consultant and our local committee for producing this plan.

The Board is in complete agreement with the plan and hopes that DCS accepts it promptly. Thank you for your consideration.

Sincerely,


TIMOTHY D. GODDARD,
Town Administrator

TDG:lk



**Littleton Park and Recreation
P.O. Box 934
Littleton, MA 01460
(978) 486-3120**

To: Rita Biagioni
Open Space and Recreation Implementation Committee
From: Park and Recreation Commission
Lisa Paradis *LP*
Re: Open Space Plan
Date: January 17, 2003

The Park and Recreation Commission recently reviewed the draft of the new Open Space and Recreation Plan and is in agreement that the content adequately reflects the needs of the department.

Further, the commission would like to take this opportunity to thank the Open Space and Recreation Implementation Committee for overseeing the open space plan update in such a timely and organized manner.

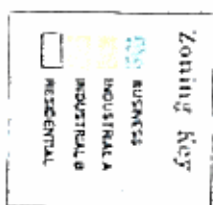
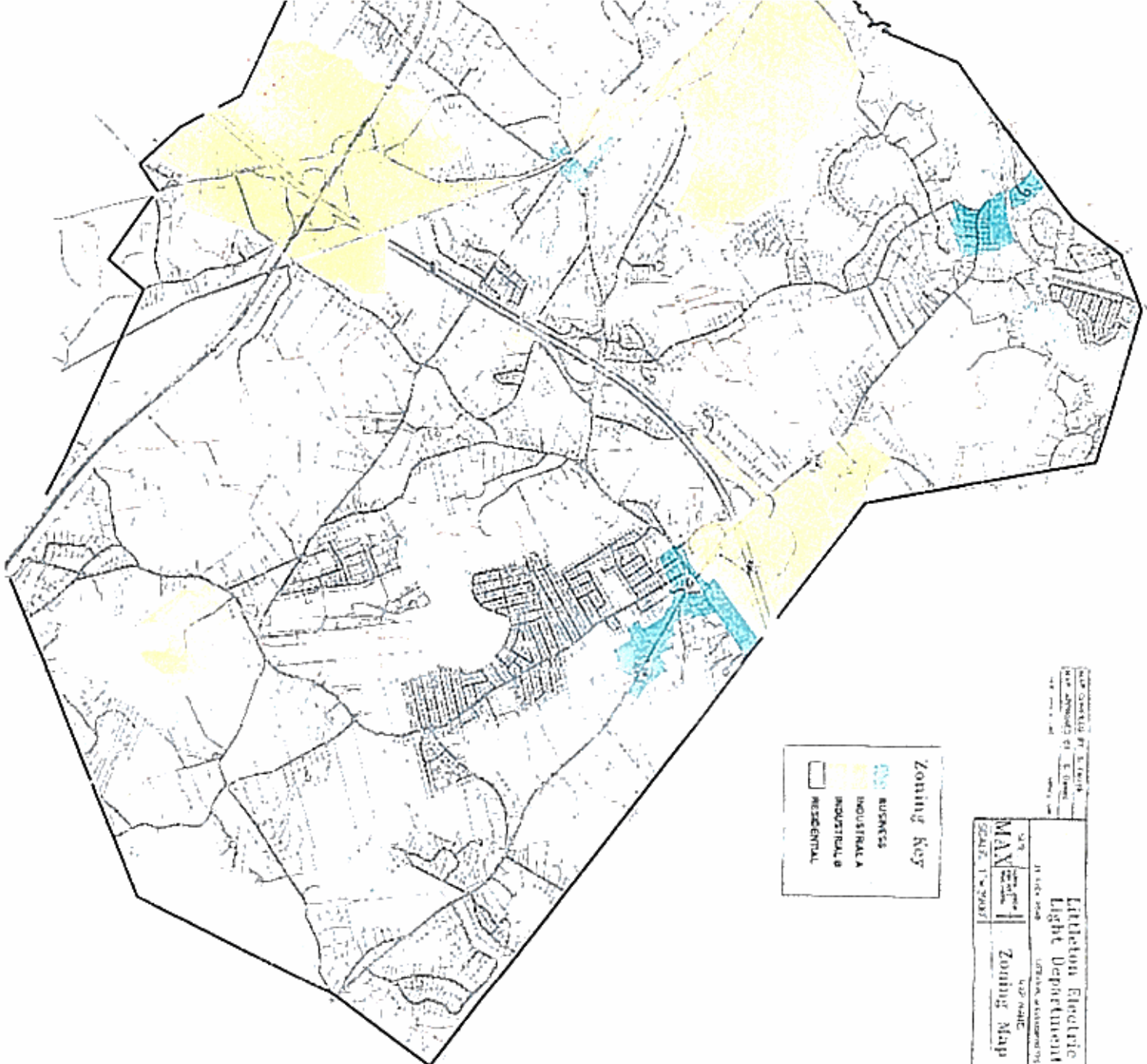
If you should have any questions, please do not hesitate to contact me at (978) 486-3120.

Section 11
References

11.0 REFERENCES

Department of Housing and Community Development Community Profiles;
Executive Office of Environmental Affairs Buildout Analysis;
Executive Office of Environmental Affairs "The State of Our Environment Report," April 2000;
Federal Emergency Management Agency. Flood Insurance Rate Map (FIRM) for Littleton,
Massachusetts, June 15, 1983;
Lemire, Robert, *Creative Land Development*;
Littleton Open Space and Recreation Plan, 1997
Littleton Water and Light Department;
Massachusetts Department of Environmental Management *Landscape Inventory*;
Massachusetts Department of Environmental Protection;
Massachusetts Department of Environmental Protection –Bureau of Waster Site Cleanup
Massachusetts Department of Revenue, Division of Local Services;
Massachusetts Division of Employment and Training;
MassGIS;
Massachusetts Institute for Social and Economic Research (MISER);
Natural Heritage and Endangered Species Program - Division of Fisheries and Wildlife;
Official Dedication Booklet of the 250th Anniversary of the Town of Littleton, 1965;
Statewide Comprehensive Outdoor Recreation Plan;
Sykes, John Thomas, *A History of Littleton*, 1953; and
United States Bureau of the Census

Section 12
Figures



DATE CHECKED BY: S. T. Smith		DATE APPROVED BY: S. T. Smith	
LITTLETON Electric Light Department			
DATE: 11/14/2008	BY: S. T. Smith	DATE: 11/14/2008	BY: S. T. Smith
SCALE: 1" = 2000'		SCALE: 1" = 2000'	

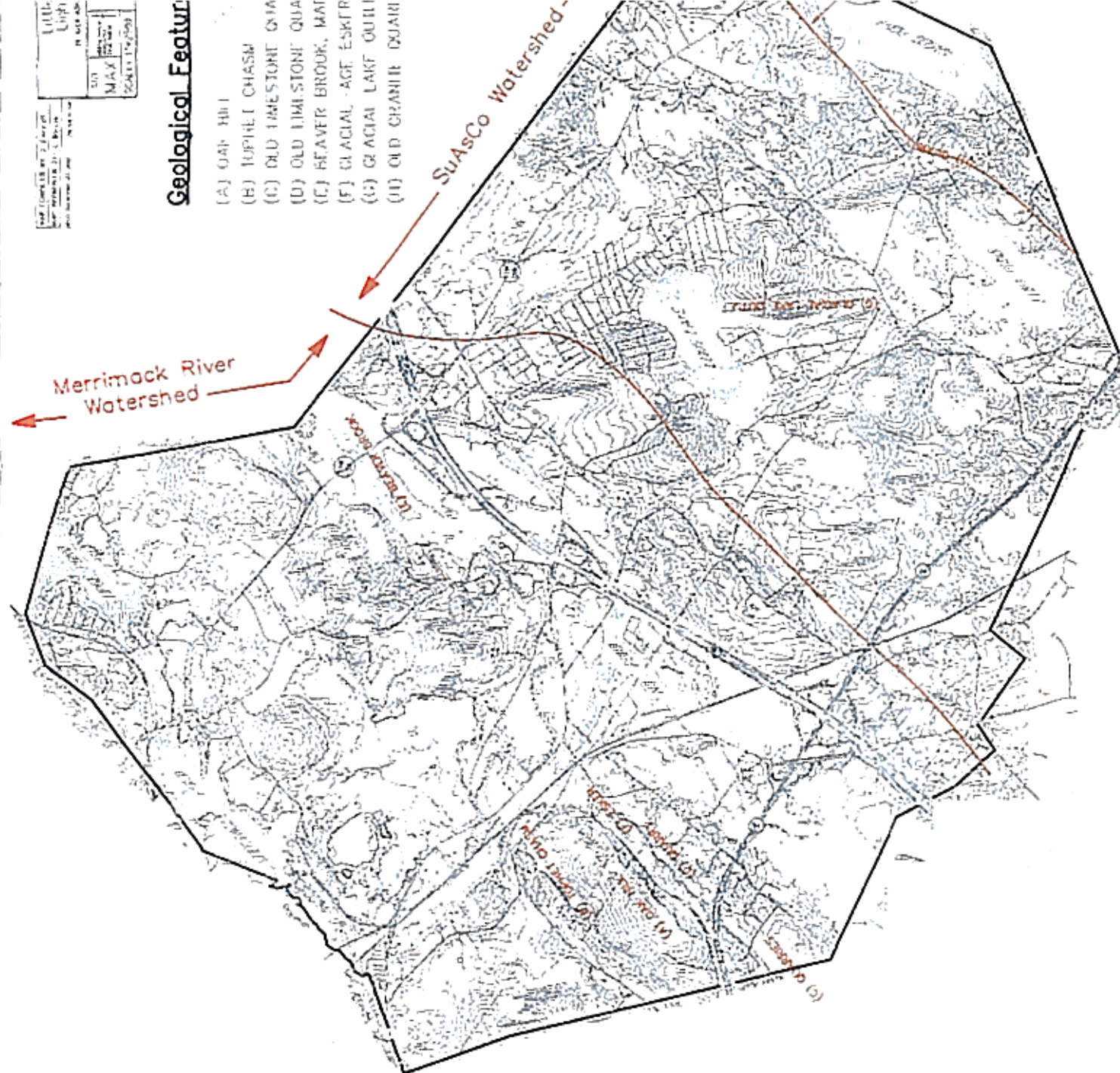
**ZONING
MAP**

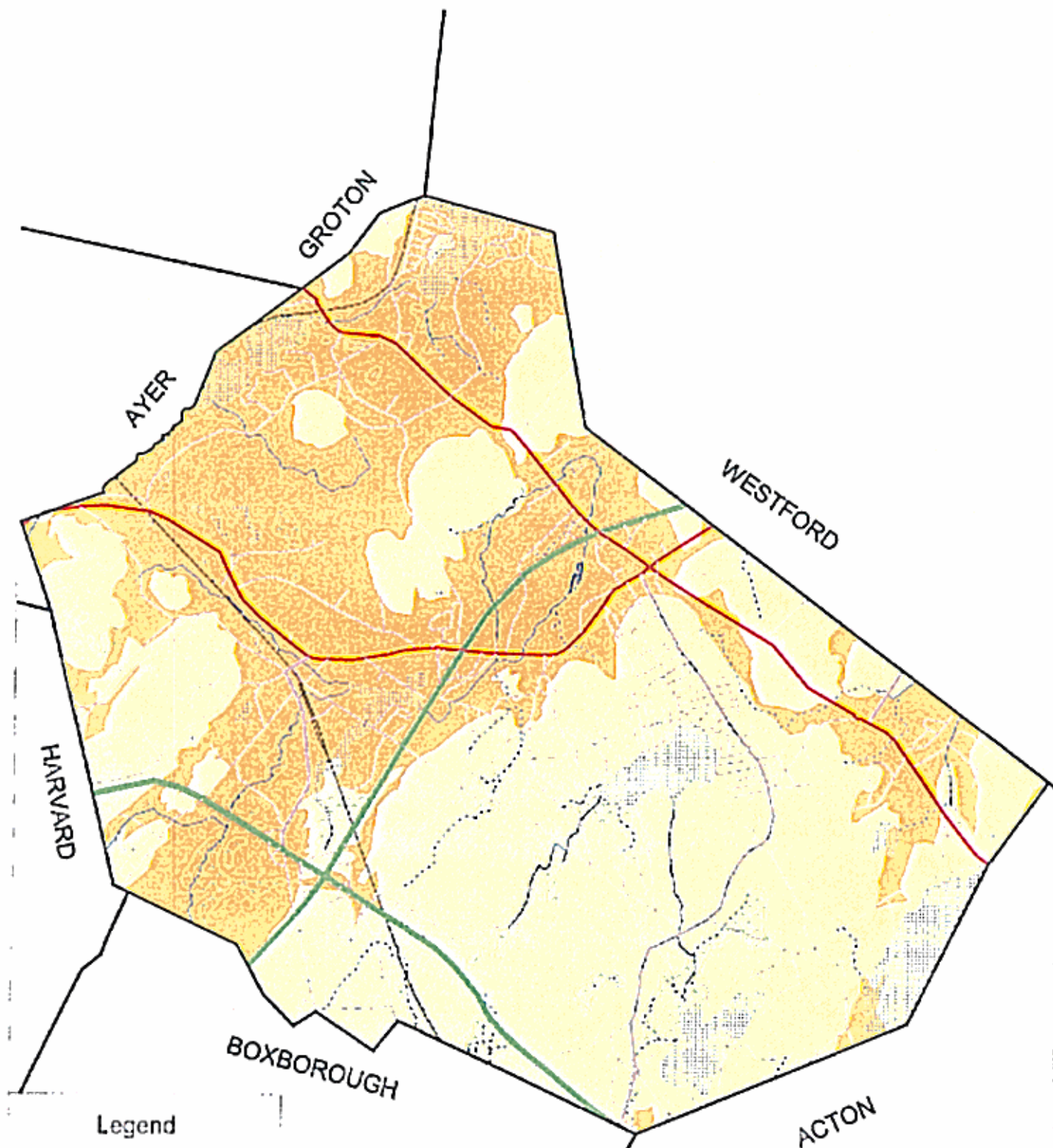
Figure

DATE: 11/12/09	BY: [signature]
MAX: 100	MIN: 0
UNIT: Feet	SCALE: 1" = 100'
PROJECT: [illegible]	DATE: 11/12/09

Geological Features

- (A) GAP Hill
- (B) TUPHET CHASM
- (C) OLD LIMESTONE QUARRY
- (D) OLD LIMESTONE QUARRY
- (E) BEAVER BROOK, MAINTENANCE
- (F) GLACIAL AGE ESKER
- (G) GLACIAL LAKE OUTLET
- (H) OLD GRANITE QUARRY





Legend

- Town Boundary
- Roads**
- Limited Access Highway
- Multi-lane Hwy
- Other Numbered Hwy
- Major Road - Connector
- Minor Street or Road
- Railroad
- Perennial Stream
- - - Intermittent Stream
- Surface Water
- Wetland
- Sand & Gravel
- Till or Bedrock

BEALS AND THOMAS, INC.

Civil Engineering
Landscape Architecture
Land Surveying
Planning
Project Management

Beals and Thomas, Inc.
200 Tappan Street, Suite 10
Southwest, MA 01901
Tel: (508) 885-0100
Fax: (508) 885-0101
www.bealsandthomas.com

Generalized Soils Map

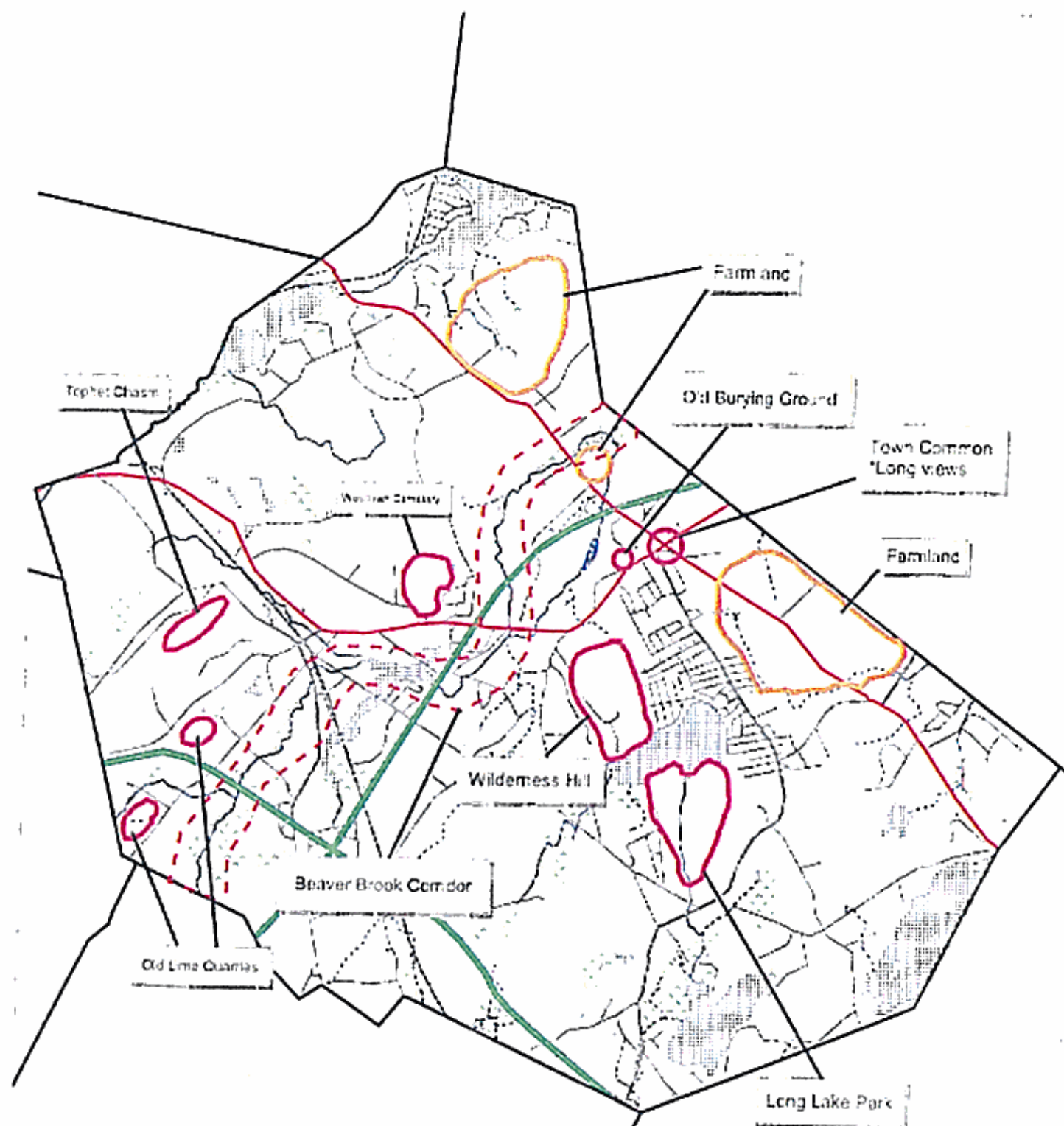
Source: MassGIS

November 2002

BTI Project No. 1686.00

BTI File No. 168500av001

Figure 3
Attleboro, MA



Legend

- Town Boundary
- Roads**
- Limited Access Highway
- Multi-lane Hwy, not limited access
- Other Numbered Hwy
- Major Road - Connector
- Minor Street or Road
- Railroad
- Potential Stream
- Intermittent Stream
- Surface Water
- Wetland

1 0 1 2 Miles

BEALS AND THOMAS, INC.

Unique and Scenic Features Map

Source: MassGIS

March 2003

BTI Project No. 1686.00

BTI File No. 168600a001

Figure 4
Littleton, MA

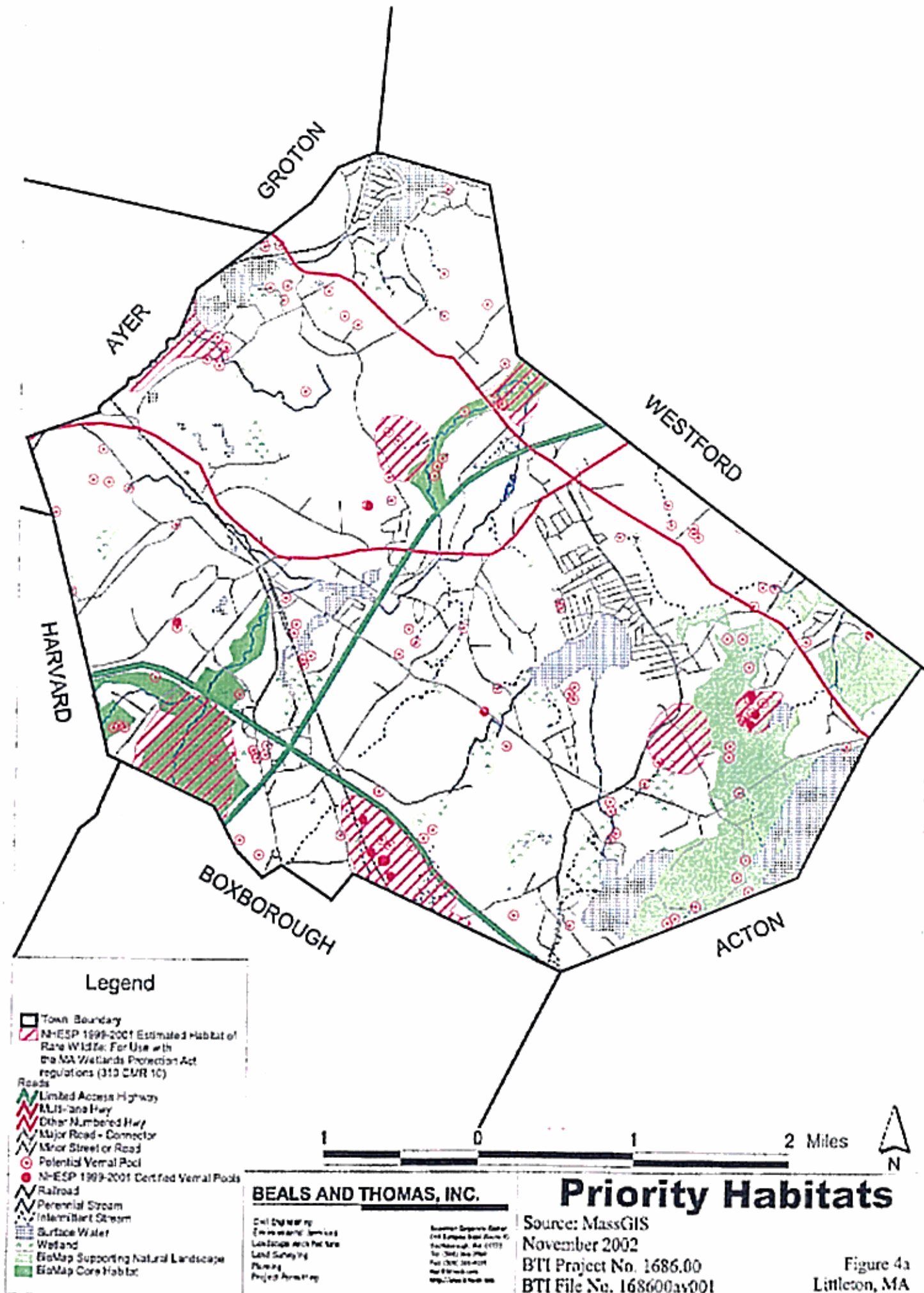


Figure 4a
Littleton, MA

MAP COMPILED BY: J. Farnell
MAP APPROVED BY: J. Dando

34 1/2" x 45 1/2"

INCHES 34"

Littleton Water Department

SIZE	MAP VERTICAL AGE TRUE NORTH	MAP NAME	REV.
N/A		Water Resources	1
SCALE: 1"=4500'			

Spectacle Pond
Well

GROTON

Well #2

WESTFORD

Whitcomb Avenue
Wells

HARVARD

LITTLETON
ROXBOROUGH

ACTON

HARVARD

ACTON

STOW

MAP KEY:

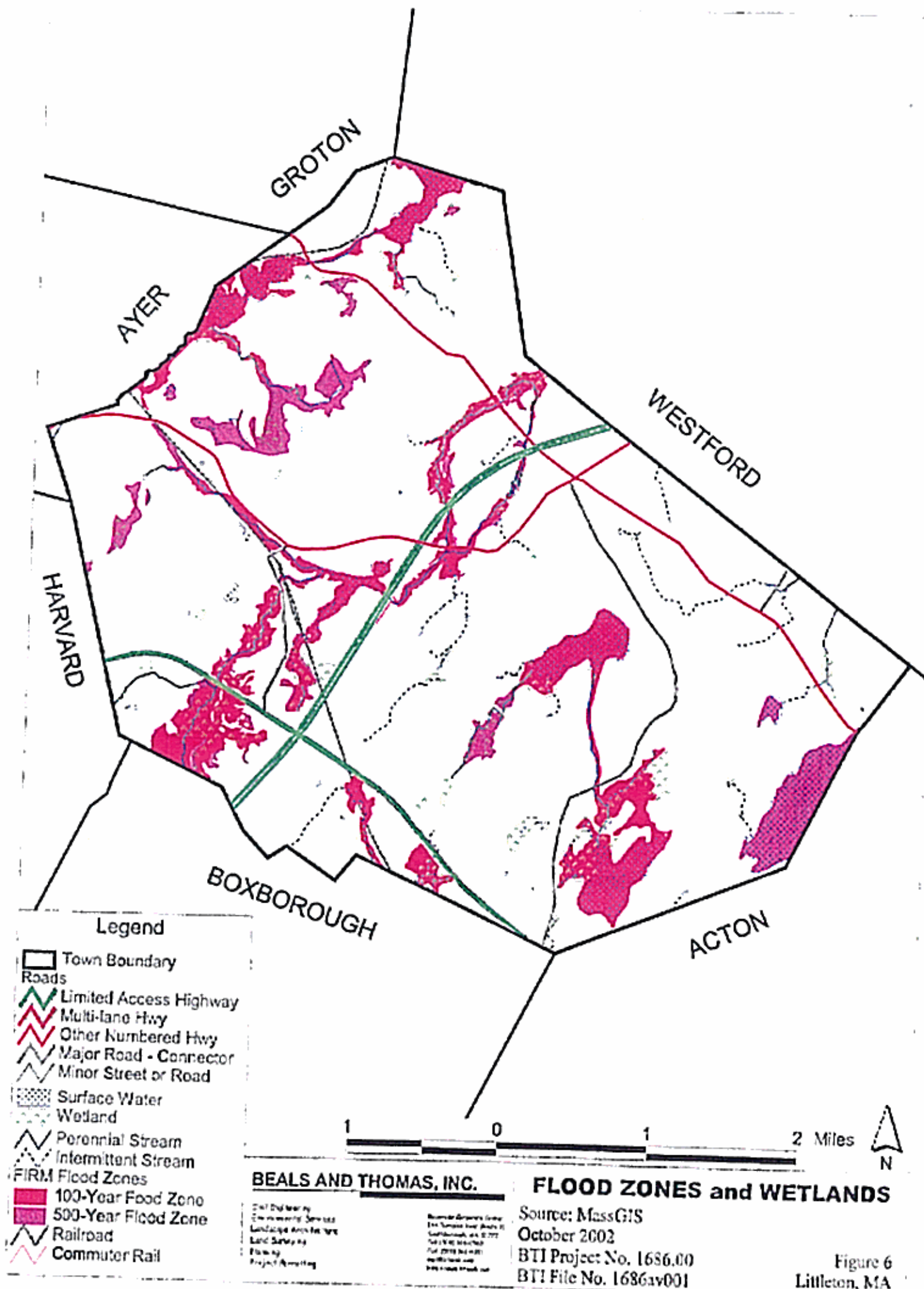
ZONE I



ZONE II

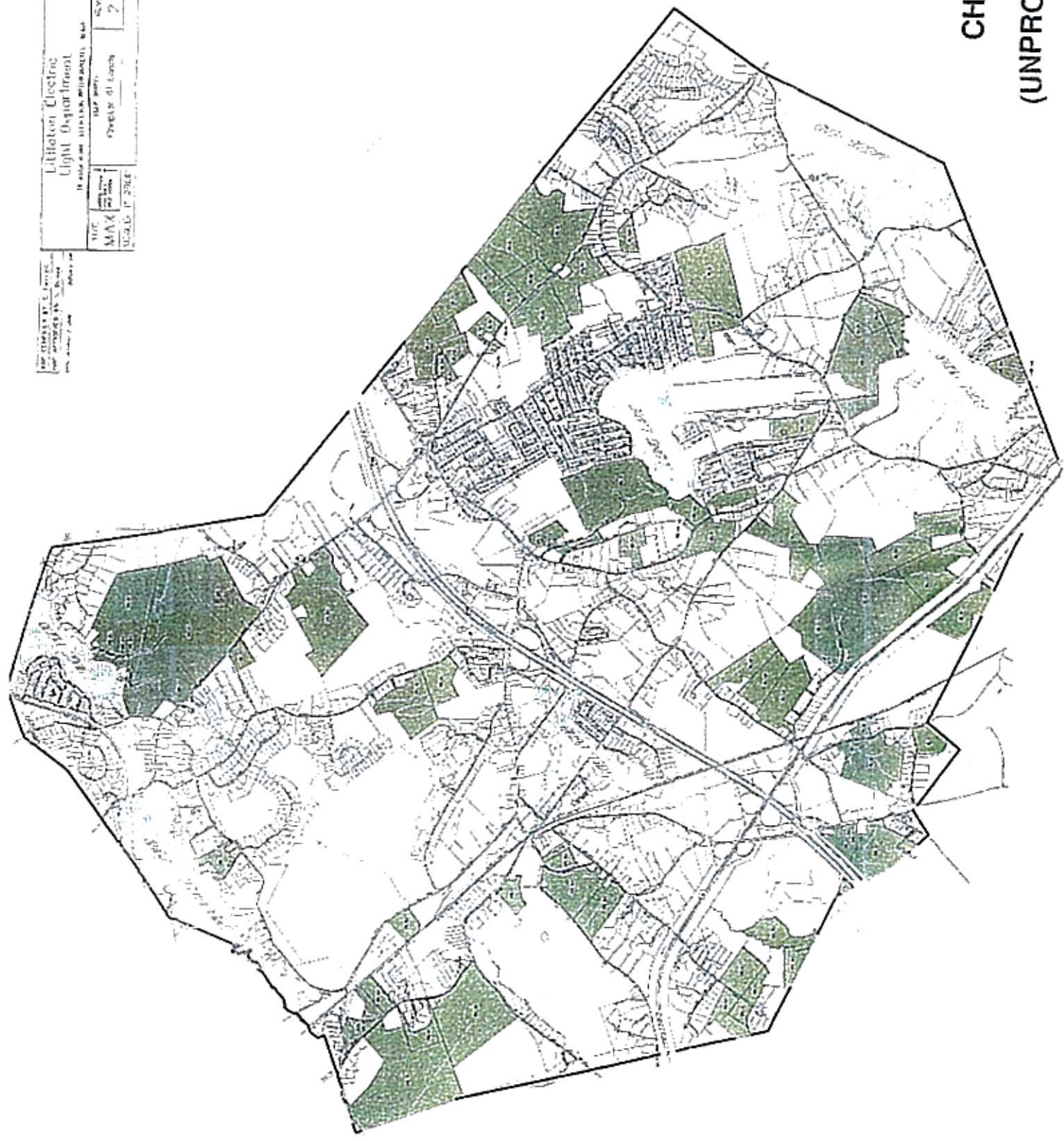
ZONE III

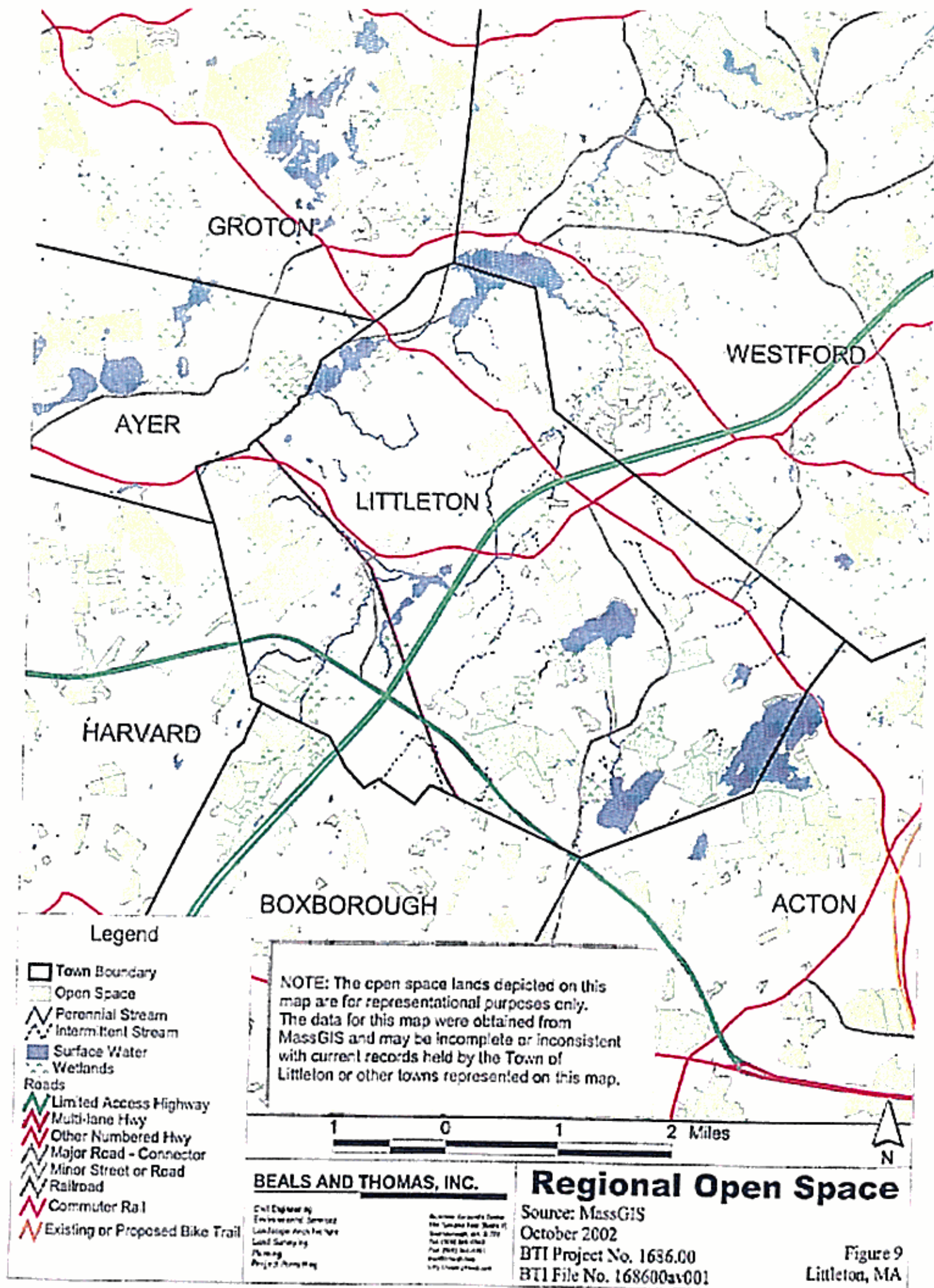
WATER RESOURCES

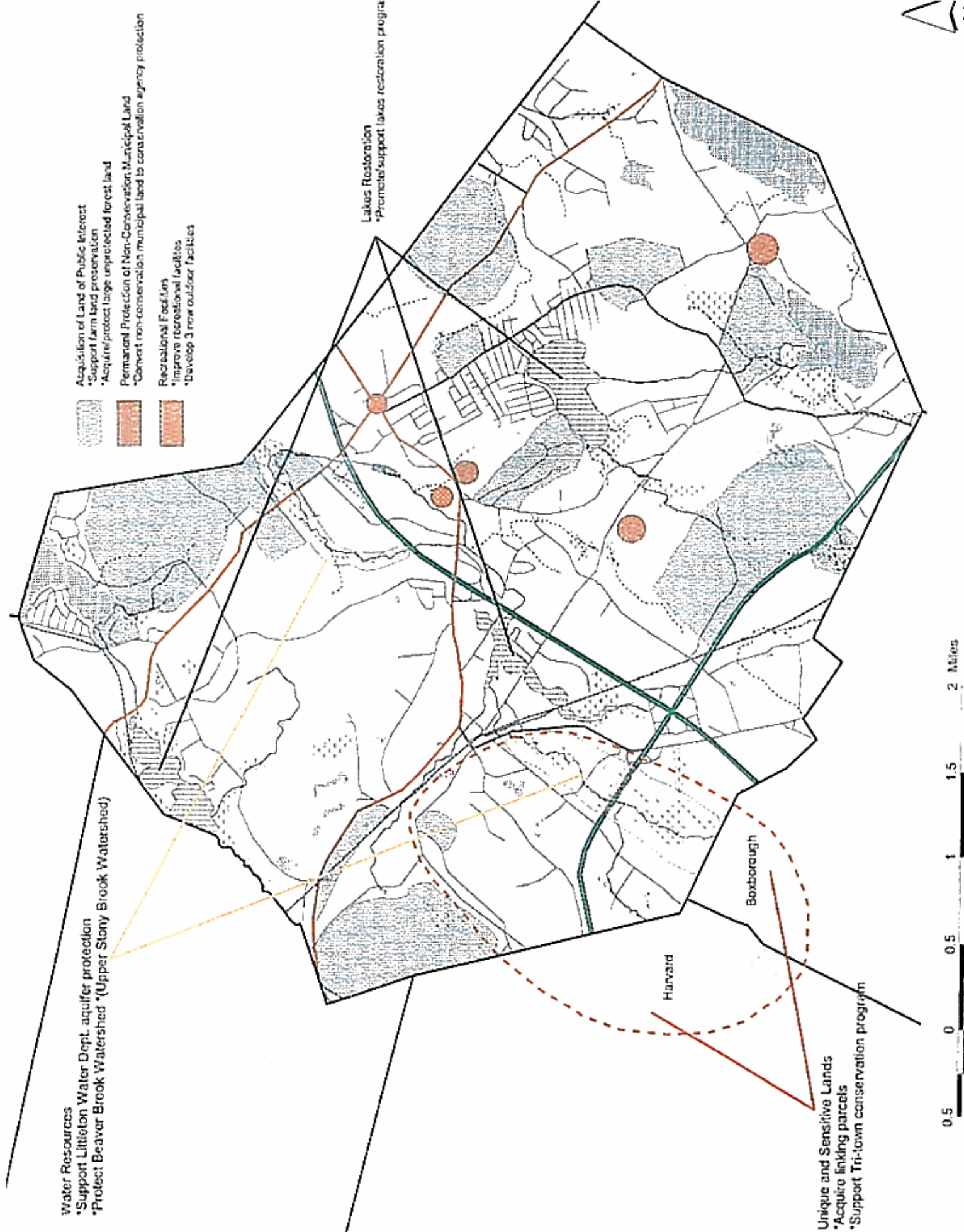


MAP PREPARED BY: [illegible]
 DATE: [illegible]
 SCALE: [illegible]

Littletown Electric Light Department		DATE: [illegible]	
DATE: [illegible]	SCALE: [illegible]	DATE: [illegible]	SCALE: [illegible]
MAX: [illegible]	MIN: [illegible]	DATE: [illegible]	SCALE: [illegible]
SCALE: [illegible]	DATE: [illegible]	SCALE: [illegible]	DATE: [illegible]







Appendix A

Public Survey Summary

Town of Littleton Resident Questionnaire

Sponsored by the Open Space and Recreation Plan Implementation Committee

The Open Space and Recreation Plan Implementation Committee is a group of volunteers, appointed by the Board of Selectmen, to implement the Open Space and Recreation Plan that was adopted by the Town in 1997. This plan needs to be renewed every five years. We are in the process of collecting information to establish the goals and objectives for the new Open Space Plan that will be published in 2002. As part of that research, we are conducting a survey to better understand the wishes of Littleton residents.

Please take a few minutes to complete the following survey, using additional paper if necessary. Please fold it, and tape it so the address appears on the outside. Please mail, or drop off at the Town Hall, Library, Donelan's, or the King Street Post Office by October 10, 2001. Once summarized, we will publish the survey findings in the Independent.

Here are a few facts we would like you to review before you complete the survey:

- ❖ The total land area of Littleton is 10,760 acres, or approximately 16.5 square miles.
- ❖ The Town contains approximately 1252 acres of protected land, or 11.6% of the Littleton's total area. This compares to an average of 19.8% in surrounding towns. (Protected land includes that owned by the Littleton and Concord Water Departments, the Littleton Conservation Trust, the Board of Selectmen, and the Conservation Commission)
- ❖ The 128-acre Nagog Hill Orchard was purchased by the Town in 1999 – It was the #1 cited open space parcel to preserve from a similar survey we conducted in 1997.
- ❖ In 2000, 74 building permits for new homes were issued in Littleton. In the past 5 years the average number of permits has been 57 per year. Year-to-date in 2001 32 have been issued.

We received 505 replies out of approx. 3800 mailed. 13.3% response rate

1. Why is open space preservation important to you? Please rank (1, 2, 3, etc.) in order of importance, with #1 being most important.

Drinking water	2	Agriculture	6/7
Water protection (lakes, streams)	3	Rural Characteristics	4
Hiking trails	8	Wildlife Habitat	5
Biodiversity	6/7	Other	
Quality of life	1		

2. How often do you, or your family, use conservation land? (Oak Hill, Long Lake Park, Newtown Hill, Sarah Doublet Forest, Bumblebee Park, etc.) Circle one: **weekly** **monthly** **quarterly** **yearly** **never**

tie- weekly & monthly

3. Are existing conservation lands adequate for your needs? (Mostly yes, but with suggestions) YES NO

a.) If no, what suggestions would you make for improving them?

Linkage, more trails, protect more land

b.) If no, what additional parcels of land would you like the Town to look into preserving?

Farms along 2A-119; linking parcels; (properties mentioned by name, Hartwell, Yapp, Prouty properties)

4. Would you vote favorably at Town Meeting to purchase a piece of conservation land in the future? YES NO

yes 445 no 41 some 'depends on the parcels'

5. Would you vote favorably for stronger protection of Littleton's wetlands? YES NO

yes 425 no 48

6. What additional recreation facilities do you think Littleton needs?

ike paths, tennis courts, skating (ice & roller) pool, teen and senior centers

7. What additional recreation programs would you like the Town to offer?

adult: softball, volleyball, aerobics, soccer

Kids: gymnastics

General: boating, cross-country ski

8. How long have you lived in Littleton? 17 yr avg Why did you choose to move here?

rural atmosphere, location (proximity to work), affordability and schools

If you would be interested in serving on the Open Space and Recreation Plan Implementation Committee, please contact the Board of Selectmen's office at 952-2311. **Thank you for taking the time to respond!**

Appendix B

Meeting Notes and Press Coverage

PLANNING FOR THE FUTURE OF LITTLETON
OPEN SPACE AND RECREATION PLAN WORKSHOP

Littleton Town Hall • September 25, 2002 • 7:30 P.M. – 9:00 P.M.

Welcome – Littleton Open Space and Recreation Plan Implementation Committee

PURPOSE OF MEETING:

To consider the valuable character of town, consider community needs and plan for future conservation and recreation opportunities in Littleton.

I. Introduction – Beals and Thomas, Inc.

What is the Open Space and Recreation Plan Update?

Why are we here tonight and what are the goals of this workshop?

How are open space and recreational needs changing in Littleton?

II. Group Discussion

Review of Discussion Questions

Development of Community Vision/Goals

Prioritizing Unprotected Land

III. Presentation of Ideas

Summary of group conclusions

IV. Open Discussion

Closing Remarks: Littleton Open Space and Recreation Plan Update Committee

168600AG001

Discussion Topics

1. What are the important recreational needs and where are they needed in town?
2. What are the distinctive landscapes, natural resources and critical conservation lands?
3. What is it that gives Littleton its character? (Landscape, Scenic Areas, Historic Villages, Buildings, Neighborhoods, Parks)
4. What are some target acquisition properties for conservation restrictions and open space?
5. What are some broader environmental and conservation issues critical to Littleton. What is the message that this group needs to convey to the community?

Sign In Sheet

Littleton Open Space And Recreation Plan Workshop
September 25, 2002

Please Print Clearly

Name	Address	Affiliation (if any)
Richard Dennis	34 Birch Dr.	Open Space Com
Saul Foss	7 Cedar	Open Space Com
Peter Church	9 Elmwood	Open Space Com
Melissa Spurr	87 Hartwell Ave	Open Space Com
Rita Biagini	P.O. Box 362	Open Space
Art Lazarus	Shaker Lane	Open Space
Barbara Chapin	PO Box 1031	Com Cam
ALBERT R. GREGORY	45 LAKE WARREN DR	PARK & REC.
GINO FIRATTALLONE	26 HARWOOD - 114	OPEN SPACE COM.
JOE SOUZA	28 ERNIES DR	OPEN SPACE MASTER PLAN



Littleton Park and Recreation

P.O. Box 934

33 Shattuck Street

Littleton, MA 01460

(978) 486-3120

(978) 952-6053

littletonrec@rcn.com www.littletonrec.com

To: Open Space Committee
From: Littleton Park and Recreation Commission
Subject: Open Space Recreational Needs
Date: September 23, 2002

The purpose of this memo is to provide the Open Space Committee with an assessment of the needs for open space for recreational usage in Littleton, as seen by the Park and Recreation Commission.

The Littleton Park and Recreation Department serves Littleton and the surrounding communities, including Ayer, Shirley, Harvard, Groton, Acton, Boxborough, Westford, as well as other towns. Among other programs, the soccer organization has over 500 youth enrolled in programs, and youth baseball registrations exceeded 300 in 2002. Other areas of growth include Camp Tahattawan, with over 600 enrolled, and swimming lessons, with 600 registrants this season alone. To continue to meet the expanding demands of a growing community, the department has some immediate needs for recreation space, as well as some long-term goals for the town's future needs.

The immediate needs include:

- Two Little League sized baseball diamonds
- One outdoor basketball court
- One outdoor volleyball court
- Renovation and expansion of the park area at 300 King Street

Long term needs include:

- A multi-purpose facility to house a teen center, preschool, athletic facility (gym) and other programs

If you should have any other questions, please do not hesitate to contact Lisa Paradis, Director, at (978) 486-3120.

Reservoir Corporate Center
144 Turnpike Road (Route 9)
Southborough, Massachusetts 01772-2104

Tel. 508-366-0500
Fax 508-366-4391
mail@btiweb.com
http://www.btiweb.com

MEETING DATE: September 25, 2002

ISSUE DATE: October 2, 2002

REFERENCE: Littleton Open Space and Recreation Plan Public Workshop
Littleton, Massachusetts
BTI Project No. 1686.00

PRESENT: Rita Biagioni, Open Space and Recreation Plan Implementation Committee
Sarah Foss, Open Space and Recreation Plan Implementation Committee
Richard Dennis, Open Space and Recreation Plan Implementation Committee
Peter Church, Open Space and Recreation Plan Implementation Committee
Melissa Spurr, Open Space and Recreation Plan Implementation Committee
Art Lazarus, Open Space and Recreation Plan Implementation Committee
Gino Frattallone, Open Space and Recreation Plan Implementation Committee
Joe Souza, Open Space Master Plan
Barbara Chapin, Conservation Commission Administrator
Albert Gregory, Littleton Parks and Recreation Department
Robert Weidknecht, Beals and Thomas, Inc.
Holly Johnson, Beals and Thomas, Inc.
Lisa Berry, Beals and Thomas, Inc.

PREPARED BY: Holly Johnson, Beals and Thomas Inc.

COPIES TO: Rita Biagioni, Open Space and Recreation Plan Implementation Committee
Robert Weidknecht, Beals and Thomas Inc.
Holly Johnson, Beals and Thomas Inc.
Lisa Berry, Beals and Thomas Inc.

MEETING OVERVIEW:

A 15 minute overview of the project, progress to date and the purposes of the Open Space and Recreation Plan (OSRP) update was given by Robert Weidknecht of Beals and Thomas, Inc. (BTI). This overview included discussion and reference to several large-scale maps created by

both the Littleton Water and Light Department and BTI depicting protected lands and their respective ownership, Chapter 61 lands, regional open space and the location of aquifers and wells within the Littleton. Demographics of the town and the changes between 1990 and 2000 to population and age distribution were also discussed. A list of draft goals and objectives, compiled from information from the Open Space and Recreation Plan Implementation Committee (OSRPIC) and a previous survey sent to residents was distributed to the workshop participants and reviewed for clarification, additional ideas and prioritization. These goals were broken down into various topics including: recreation, distinctive landscapes and natural resources, character, watershed protection, and general concerns. Listed below are comments, suggestions and potential goals or action items made during the open discussion of this public workshop.

Prior to review of the goals and objectives, Mr. Albert Gregory, a member of the Park and Recreation Department, addressed the audience with a "wish list" of recreational needs identified by the Littleton Park and Recreation Committee. These needs include:

Short Term

- Two Little League sized baseball diamonds
- One outdoor basketball court
- One outdoor volleyball court
- Renovation and expansion of the park area at 300 King Street

Long Term

- Development of a Teen Center or some type of multi-purpose recreational facility.

No particular location for any of these recreational needs were identified at this time. A. Gregory suggested contacting the Director, Lisa Paradis with any questions.

RECREATION

- In addition to the Park and Recreation Department needs it was also noted that some sort of community center, teen center or senior center was needed in Town. Perhaps this could be achieved through the retrofitting of existing buildings in Town rather than new construction. The old Littleton Water and Light building on Whitcomb Road was suggested as a potential redevelopment area. A teen center could be spearheaded by the Park and Recreation Department, while efforts to create a senior center would fall under the jurisdiction of the Council on Aging.
- The use of local ponds for swimming and boating is being addressed by many of the local lake associations. Improving access and parking to these areas (Long Lake, Mill Pond, Spectacle Pond) are of concern.

Meeting Summary

BTI Project No. 1686.00

Meeting Date: September 25, 2002

Issue Date: October 2, 2002

Page 3

- Efforts have been undertaken to improve the quality of water in the Town's lakes. BTI has requested a summary of the lake association's efforts and any current or proposed projects underway to improve water quality.
- Concerns were raised about maintaining water quality for swimming and boating in the ponds whose borders are shared with other towns (Forge Pond and Spectacle Pond).
- Improving accessibility for handicapped visitors to the lakes is something that the Long Lake parking renovation will be considering, and this type of accessibility should be investigated at other lakes in Town.
- Bike paths throughout the Town are difficult given its bisection geographically by Rt. 495, Rt. 2 and Rt. 119 / Rt. 2A. Rail beds are currently still in use and roads are often not wide enough to accommodate a bike lane. Perhaps designated bike lanes on existing roads could be created on more heavily traveled roads to popular destinations.
- There used to be some problems with All-Terrain Vehicles (ATVs) and snowmobiles on some Conservation lands, however a small group of residents have been patrolling and cracking down on inappropriate use of the lands. Horses are allowed only on Town-owned lands and not Conservation Trust properties.

DISTINCTIVE LANDSCAPES AND NATURAL RESOURCES

- Many of the natural landforms in Town have already been protected through conservation efforts.
- Attention should be paid to lands along Beaver Brook. The Water Department has been very proactive about ensuring the water supply and conservation efforts to protect the viability of its watershed. The naturally wide floodplain associated with Beaver Brook has prevented many homeowners from conducting extensive activities too close to the Brook, however, there is significant development along the Brook that should be monitored.
- The Sanderson Esker, located adjacent to the Oak Hill Conservation Area, is of particular importance. An effort should be made to study further the unique attributes of this land. This land is upgradient of a Town well.
- Preserving the farmlands along Rt. 2A / Rt. 119 are very important to maintaining the distinctive landscape and scenic qualities of the area.
- The long views from the Town Common should be preserved to the extent practicable.
- Look into creating a historic district bylaw to help maintain the existing scenic views of traditional homes in certain portions of Town. A previous attempt at this failed 16 years ago but may be worthwhile to try again. The Historic Commission has an inventory of buildings 50 years and older that may be helpful in this process.

- Continue the stewardship program for the maintenance of Town-owned conservation lands. Work to recruit more members to work for this volunteer group. While boy scout groups may be a way to maintain trails, often as part of projects they need to construct something and there are concerns about ongoing maintenance of such structures on conservation lands. This group is headed by Art Lazarus. Perhaps the group could institute the use of a stewardship form for various recreation areas to help establish a uniform level of maintenance town-wide
- While existing trail networks on conservation lands are sufficient, if new lands are acquired, look to establish additional trails on these parcels as well.

CHARACTER

- Continue to provide outreach to large agricultural land owners to encourage the creation of agricultural preservation restrictions to help maintain the existing farmland scenery along Rt. 2A/ Rt. 119.
- Continue to investigate ways to encourage preservation of open space in conjunction with subdivision growth. Provide incentives and encourage the creation of conservation restrictions by developers who create larger subdivisions in Town.
- Investigate potential zoning changes or planning board actions that will help mitigate the impacts associated with sprawling development.
- Adopt a wetlands bylaw that goes beyond the state Wetlands Protection Act with a no-touch zone.
- The noise of Interstate 495 has increased considerably in recent years. Consider having the Planning Board investigate possibilities of creating buffers along the interstate to reduce noise in nearby homes, perhaps have a town representative join the I-495 Initiative to voice concerns for the Town.
- Some of the conservation lands near 495 are underutilized because the noise along 495 is too loud.
- Traffic along Rt 2A/ Rt. 119 has increased in volume and speed. Look into implementing traffic calming measures to create a more pedestrian-friendly Town Common rather than just a through road for passing traffic.

MISCELLANEOUS

- Investigate permanent protection of municipal lands through the creation of conservation restrictions and the change in ownership to the Land Trust or Conservation Commission. Conduct a review of the larger municipal lands to prioritize which areas should be targeted for placement in a conservation restriction.
- Continue to fund the municipal land acquisition fund and look to find a group to spearhead an effort to bring the Community Preservation Act before Town meeting for a

Meeting Summary

BTI Project No. 1686.00

Meeting Date: September 25, 2002

Issue Date: October 2, 2002

Page 5

vote. Typically the acquisition fund has received \$25,000 to \$50,000 year through the Town budget. Money for the fund also comes through cell tower leases.

- Continue efforts to create a Tri-Town Conservation Area with Boxborough and Harvard. Focus efforts where possible on acquiring lands in this area to create linkages with existing conservation lands.
- The Town does have an annual hazardous waste collection day. This should be continued.
- It was noted that the CPA is a good idea, but it is not necessarily the right time to implement in Littleton. It should be explored further and put on the longer term list of goals and objectives.

These minutes are accepted as accurate and complete unless corrections and/or additions are received within one week of issue.

HSJ/168600MT001

DRAFT GOALS AND OBJECTIVES FOR LITTLETON OSRP

RECREATION

- a. Establish in a controlled manner, public access to the Town's lakes and ponds currently not accessible.
- b. Support lake and pond improvement programs established by the town's Lakes and Ponds Associations.
- c. Seek opportunities to improve and enhance recreational opportunities for the handicapped. Update facilities to meet ADA requirements.
- d. Support active and passive recreational programs for all ages of residents.
- e. Establish long term program for maintenance of active recreational facilities and properties. Work with state and other private land conservation agencies to develop a plan for the maintenance and management of open space and recreation areas in Littleton.
- f. Provide recreation opportunities for younger residents.
- g. *Suggested additional recreational facilities that people have suggested include: bike paths, tennis courts, skating (ice and roller), pool, teen and senior center (taken from survey summary)*
- h. *Suggested additional recreation programs include: Adult softball, adult volleyball, adult aerobics and adult soccer, kids gymnastics, and in general boating and cross-country skiing (taken from survey summary).*

DISTINCTIVE LANDSCAPES, NATURAL RESOURCES

- a. Protect unique and historic natural landforms, lands of scenic value, waterways, and geologic features.
- b. Establish linkages between existing public and private open space to reduce fragmentation.
- c. Establish a permanent Board or Task Force to enforce and implement conservation restrictions, boundaries, easements and land management plans.
- d. Manage existing and new conservation land on a continuous and permanent basis.
- e. Support efforts to establish Zoning by-laws and Land Use regulations to minimize adverse environmental impact by commercial and residential developments.

- f. Seek opportunities for cooperative programs with adjacent towns to preserve and enhance natural resources extending beyond town boundaries and create larger areas of contiguous open space in ecologically sensitive areas.

CHARACTER

- a. Work with appropriate authorities and stakeholders to endure the viability of existing farming operations. Protect active agricultural operations in Town and undeveloped land suitable for farming.
- b. Promote modern concepts of new Zoning By-laws to maximize the preservation of open space and natural resources.
- c. Support efforts to minimize expansion of the existing major highways and railroad systems in Town. Implement strategies to maintain the rural character of Rte. 119 and Rte. 2A.
- d. Promote efforts to control and reduce noise and air pollution.
- e. Protect the Town Common.
- f. Preserve large tracts of land.

WATERSHED PROTECTION

- a. Provide vigilant observation, recommendations, and actions associated with wetlands and waterways to prevent degradation.
- b. Promote educational efforts to reduce use of fertilizer, pesticides, and lawn irrigation systems. Instruct the public on non-pollutive land and water practices.
- c. Coordinate land acquisition and resource protection efforts with the Water Dept.
- d. Protect wetlands, waterways, ponds, lakes and adjacent environmental buffer zones.
- e. Improve and maintain surface water quality
- f. Promote the preservation of groundwater resources and wetlands.
- g. Preserve lands to maintain aquifer and surface water health.

OTHER CONCERNS

- a. Increase permanently protected open space acreage using existing and new methods including gifts, restrictions and purchases.
- b. Educate the public about available recreational, cultural and natural resources.
- c. Modify or create bylaws that further open space preservation and prevent environmental degradation.
- d. Lessen environmental impact of development through stricter wetlands and erosion control bylaws and certification of vernal pools.
- e. Establish permanent board to implement and oversee conservation restrictions, easements and management.
- f. *Create more linkages between lands, increase the number of trails and protect more land (this is from the survey summary).*
- g. *Additional parcels the public would like the Town to look into purchasing include: the farms along Rte. 2A / 119, linking parcels and the Hartwell, Yapp and Prouty properties (this is from the survey summary).*

Also from the survey summary it is important to note that people's answers to the question regarding why they moved here were: rural atmosphere, location (proximity to work), affordability and schools.

Appendix C

Hazardous Waste Sites and Spills

SPILL ID	SITE ID	SPELL NAME	ADDRESS	TOWN	H&F	TOWNSHIP	REGION	ZIP	STAFF LEAD	FIRST DATE	LAST DATE	TOP DATE	SPILL DATE	REPORT DATE	SPILL TIME
C84-0140	0000	LITTLETON LIGHT DEPT.	PLEASANT ST GREAT RD.	LITTLETON			MIDDLESEX	01460	OTHER	6/21/1993	6/21/1993	12/26/1994		12/26/1994	
C82-0066	0000	OLD COLONY STATION		LITTLETON			MIDDLESEX	01460	SCANNAMICO, F	3/10/1992	4/11/1993	4/11/1993	4/11/1993	4/11/1993	12:23AM
C85-0160	0000	DIGITAL EQUIPMENT CORP.	DIGITAL EQUIPMENT CORP.	LITTLETON			MIDDLESEX	01460	OTHER	6/9/1993	6/9/1993	8/21/1993	8/21/1993	8/21/1993	
C85-0211	0000	WIDEST COAST TRANSPORTATION	410 GREAT RD. RTE 2	LITTLETON			MIDDLESEX	01460	OTHER	5/5/1992	5/5/1992	10/25/1995	10/25/1995	10/25/1995	
C86-0069	0000	BENDCO, INC.	NELSON MACHINE SHOP EXIT 29, EXIT 30 ON RTE 495	LITTLETON			MIDDLESEX	01460	SCANNAMICO, F	6/24/1991	3/13/1995	3/13/1995	3/13/1995	3/13/1995	
C86-0172	0000	TANKER TRUCK	228 ATER RD.	LITTLETON			MIDDLESEX	01460	WELLS, A	8/8/1991	8/8/1991	8/8/1991	8/8/1991	8/8/1991	
C86-0236	0000	TRUCK ACCIDENT	29 KING ST., WAYNE EXCON	LITTLETON			MIDDLESEX	01460	SCANNAMICO, F	11/21/1992	6/21/1995	6/21/1995	6/21/1995	6/21/1995	12:42PM
C86-0306	0000	PAUL'S CHEVROLET STATION	141 FOSTER ST., BIBBINS RESID	LITTLETON			MIDDLESEX	01460	OTHER	5/20/1994	5/20/1994	10/21/1995	10/21/1995	10/21/1995	
C86-0401	0000	EXCON	29 KING ST., WAYNE EXCON	LITTLETON			MIDDLESEX	01460	STEINBERG, P	2/5/1992	11/01/1995	10/30/1995	10/30/1995	10/30/1995	
C86-0423	0000	BURSAW OIL RELEASE AT RESID.	MARYARD RD.	LITTLETON			MIDDLESEX	01460	STEINBERG, P	2/11/1992	12/22/1995	12/21/1995	12/21/1995	12/21/1995	10:00
C87-0032	2-0062	NEW ENGLAND APPLE PRODUCTS	HARVARD RD.	LITTLETON			MIDDLESEX	01460	SALVADORE, D	6/12/1994	6/12/1994	12/8/1997	12/7/1997	12/7/1997	03:35PM
C87-0189	0000	LUST REMOVAL	RTE. 2A	LITTLETON			MIDDLESEX	01460	ELLIS, J	8/12/1994	8/12/1994	5/18/1997	5/18/1997	5/18/1997	
C87-0291	0000	TRUCK ACCIDENT	RTE. 2 & 495	LITTLETON			MIDDLESEX	01460	SALVADORE, D	6/12/1994	6/12/1994	5/18/1997	5/18/1997	5/18/1997	
C87-0271	0000		STEPHENS ST @ GOLFSMITH RD	LITTLETON			MIDDLESEX	01460	CUSHING, G	5/23/1990	5/23/1990	6/23/1997	6/23/1997	6/23/1997	12:00AM
C87-0352	0000		OLD PICKARD ROAD	LITTLETON			MIDDLESEX	01460	ELLIS, J	8/12/1994	8/12/1994	5/18/1997	5/18/1997	5/18/1997	
C88-0099	0000		RTE 2	LITTLETON			MIDDLESEX	01460	JOHNSTON, D	9/21/1997	9/21/1997	7/21/1997	7/21/1997	7/21/1997	8:00
C88-0129	0000		CORNER OF TAYLOR & FOSTER	LITTLETON			MIDDLESEX	01460	BRESNAHAN, C	5/21/1997	5/21/1997	8/25/1997	8/25/1997	8/25/1997	01:00PM
C88-0144	0000	IRWIN DUNN PROPERTY	328 GREAT RD.	LITTLETON			MIDDLESEX	01460	JOHNSTON, D	8/16/1998	8/16/1998	3/28/1998	3/28/1998	3/28/1998	
C88-0246	0000	HARMOND ROAD	NEW ENGLAND APPLE PRODUCTS	LITTLETON			MIDDLESEX	01460	BRESNAHAN, C	12/13/1993	12/13/1993	5/11/1998	4/21/1998	4/21/1998	09:06AM
C88-0408	0000	LITTLETON LIGHT & POWER		LITTLETON			MIDDLESEX	01460	JOHNSTON, D	6/21/1998	6/21/1998	5/11/1998	5/11/1998	5/11/1998	10:30AM
C88-0474	0000	BURSAW OIL TRUCK	NEWTON ROAD	LITTLETON			MIDDLESEX	01460	JOHNSTON, D	12/13/1993	12/13/1993	5/11/1998	5/11/1998	5/11/1998	11:00PM
C88-0618	0000		NEWTON RD	LITTLETON			MIDDLESEX	01460	JOHNSTON, D	6/21/1998	6/21/1998	5/11/1998	5/11/1998	5/11/1998	
C88-0659	0000		82 EDEL ST.	LITTLETON			MIDDLESEX	01460	BRESNAHAN, C	12/13/1993	12/13/1993	5/11/1998	5/11/1998	5/11/1998	
C88-0719	0000	CUNBERLAND FARMS	WILL POOND	LITTLETON			MIDDLESEX	01460	JOHNSTON, D	11/12/1993	11/12/1993	5/11/1998	5/11/1998	5/11/1998	01:00PM
C88-0721	0000	SHELL OIL	RTE 2A	LITTLETON			MIDDLESEX	01460	BRESNAHAN, C	2/9/1992	2/9/1992	12/22/1998	12/22/1998	12/22/1998	
C88-0730	0000		RTE 110	LITTLETON			MIDDLESEX	01460	BRESNAHAN, C	8/15/1992	8/15/1992	5/11/1998	5/11/1998	5/11/1998	
C88-0732	0000		RTE 2A	LITTLETON			MIDDLESEX	01460	BRESNAHAN, C	10/10/1999	10/10/1999	5/11/1998	5/11/1998	5/11/1998	
C88-0733	0000	HOLMES TRANSPORTATION	RTE 2A	LITTLETON			MIDDLESEX	01460	JOHNSTON, D	7/10/1999	7/10/1999	5/11/1998	5/11/1998	5/11/1998	
C88-0738	0000	FIRE STATION/TOWN HALL	RTE 495 SOUTH AT RTE 2A	LITTLETON			MIDDLESEX	01460	BRESNAHAN, C	8/15/1998	8/15/1998	5/11/1998	5/11/1998	5/11/1998	07:00AM
C88-0741	0000	MUNICIPAL LANDFILL	KING ST.	LITTLETON			MIDDLESEX	01460	BRESNAHAN, C	8/15/1998	8/15/1998	5/11/1998	5/11/1998	5/11/1998	07:00AM
C88-0747	0000	TRANSFORMER INCIDENT		LITTLETON			MIDDLESEX	01460	BRESNAHAN, C	8/15/1998	8/15/1998	5/11/1998	5/11/1998	5/11/1998	
C88-0757	0000	WHITCOMB AVE		LITTLETON			MIDDLESEX	01460	DUNLOP, C	9/15/1993	9/15/1993	9/21/1993	9/21/1993	9/21/1993	09:45AM
C88-0759	0000	SANVEL CONCRETE	NO AVER RD.	LITTLETON			MIDDLESEX	01460	BRESNAHAN, C	9/20/1993	10/01/1993	9/21/1993	9/21/1993	9/21/1993	

SPILL ID	REPORT TIME	EQC	YEAR	CASE	CLOSE	PET	HAZARD	VIRG	WASTE	SOIL	CITAM	ENV	IMPACT	O	ENV	MATERIAL	CAS	NO	MATERIAL	FOR	LEVEL	QUAN	RTD	QUAN	ACT	UNITS	RTD	UNITS	ACT
C84-0340	11:20AM					YES			PETROLEUM	WASTE																			
C85-0069	09:00AM					YES			PETROLEUM	WASTE																			
C85-0160	10:00AM					YES			HAZARDOUS	WASTE																			
C85-0231	03:00PM					YES			PETROLEUM	WASTE																			
C86-0069	03:35PM					YES			PETROLEUM	WASTE																			
C86-0173	03:05PM					YES			PETROLEUM	WASTE																			
C86-0236						YES			PETROLEUM	WASTE																			
C86-0300	02:15PM					YES			PETROLEUM	WASTE																			
C86-0340	09:30AM					YES			PETROLEUM	WASTE																			
C86-0433	01:10					YES			PETROLEUM	WASTE																			
C87-0032	04:05PM					YES			PETROLEUM	WASTE																			
C87-0169	01:00PM					YES			PETROLEUM	WASTE																			
C87-0261	12:34AM					YES			PETROLEUM	WASTE																			
C87-0271	8:00					87			PETROLEUM	WASTE																			
C87-0332	10:00					87			PETROLEUM	WASTE																			
C88-0098	03:00PM					88			HAZARDOUS	WASTE																			
C88-0123						88			HAZARDOUS	WASTE																			
C88-0184	10:00AM					88			PETROLEUM	WASTE																			
C88-0224	11:15AM					88			PETROLEUM	WASTE																			
C88-0245	11:00PM					88			PETROLEUM	WASTE																			
C88-0400						88			PETROLEUM	WASTE																			
C88-0474	11:00AM					88			HAZARDOUS	WASTE																			
C88-0518	01:10PM					88			PETROLEUM	WASTE																			
C88-0558	09:40AM					88			PETROLEUM	WASTE																			
C88-0634	09:30AM					88			PETROLEUM	WASTE																			
C88-0721	11:00AM					88			PETROLEUM	WASTE																			
C88-0749	10:00AM					88			PETROLEUM	WASTE																			
C88-0800	11:00AM					88			PETROLEUM	WASTE																			
C88-0830	10:00AM					88			PETROLEUM	WASTE																			
C88-0838	10:00AM					88			PETROLEUM	WASTE																			
C88-0871	12:15AM					88			PETROLEUM	WASTE																			
C88-0877	02:50PM					88			PETROLEUM	WASTE																			
C88-0870	03:45PM					88			PETROLEUM	WASTE																			
C88-0870	03:45PM					88			PETROLEUM	WASTE																			
C88-0870	03:45PM					88			PETROLEUM	WASTE																			
C88-0870	03:45PM					88			PETROLEUM	WASTE																			
C88-0870	03:45PM					88			PETROLEUM	WASTE																			
C88-0870	03:45PM					88			PETROLEUM	WASTE																			
C88-0870	03:45PM					88			PETROLEUM	WASTE																			
C88-0870	03:45PM					88			PETROLEUM	WASTE																			
C88-0870	03:45PM					88			PETROLEUM	WASTE																			
C88-0870	03:45PM					88			PETROLEUM	WASTE																			
C88-0870	03:45PM					88			PETROLEUM	WASTE																			
C88-0870	03:45PM					88			PETROLEUM	WASTE																			
C88-0870	03:45PM					88			PETROLEUM	WASTE																			
C88-0870	03:45PM					88			PETROLEUM	WASTE																			
C88-0870	03:45PM					88			PETROLEUM	WASTE																			
C88-0870	03:45PM					88			PETROLEUM	WASTE																			
C88-0870	03:45PM					88			PETROLEUM	WASTE																			
C88-0870	03:45PM					88			PETROLEUM	WASTE																			
C88-0870	03:45PM					88			PETROLEUM	WASTE																			
C88-0870	03:45PM					88			PETROLEUM	WASTE																			
C88-0870	03:45PM					88			PETROLEUM	WASTE																			
C88-0870	03:45PM					88			PETROLEUM	WASTE																			
C88-0870	03:45PM					88			PETROLEUM	WASTE																			
C88-0870	03:45PM					88			PETROLEUM	WASTE																			
C88-0870	03:45PM					88			PETROLEUM	WASTE																			
C88-0870	03:45PM					88			PETROLEUM	WASTE																			
C88-0870	03:45PM					88			PETROLEUM	WASTE																			
C88-0870	03:45PM					88			PETROLEUM	WASTE																			
C88-0870	03:45PM					88			PETROLEUM	WASTE																			
C88-0870	03:45PM					88			PETROLEUM	WASTE																			
C88-0870	03:45PM					88			PETROLEUM	WASTE																			
C88-0870	03:45PM					88			PETROLEUM	WASTE																			
C88-0870	03:45PM					88			PETROLEUM	WASTE																			
C88-0870	03:45PM					88			PETROLEUM	WASTE																			
C88-0870	03:45PM					88			PETROLEUM	WASTE																			
C88-0870	03:45PM					88			PETROLEUM	WASTE																			
C88-0870	03:45PM					88			PETROLEUM	WASTE																			
C88-0870	03:45PM					88			PETROLEUM	WASTE																			
C88-0870	03:45PM					88			PETROLEUM	WASTE																			
C88-0870	03:45PM					88			PETROLEUM	WASTE																			
C88-0870	03:45PM					88			PETROLEUM	WASTE																			
C88-0870	03:45PM					88			PETROLEUM	WASTE																			
C88-0870	03:45PM					88			PETROLEUM	WASTE																			
C88-0870	03:45PM					88			PETROLEUM	WASTE																			
C88-0870	03:45PM					88			PETROLEUM	WASTE																			
C88-0870	03:45PM					88			PETROLEUM	WASTE																			
C88-0870	03:45PM					88			PETROLEUM	WASTE																			
C88-0870	03:45PM					88			PETROLEUM	WASTE																			
C88-0870	03:45PM					88		</																					

SPILL ID	SOURCE	O SOURCE	INCIDENT	O INCIDENT	TYPE	CLEAN CONTRACTOR	SA	REFERENCE	NOTIF	PHONLUST	PREP	REP	LUST	EQ	CATEGORY	TO	CUS
CS40140	TRANSFORMER		OTHER RELEASE > FELL OFF POLE		---	NOT USED	NO	SAVOS DAVOS, LIGHT AND WA	NO	NO					0		
CS40068	U.S.T.		OVERFILL		---	NOT USED	NO	SAVOS DAVOS, LITTLETON HW	NO	NO					1		
CS40160	OTHER SOURCE > CONTAINERS		LEAK		---	NOT USED	NO	KEVIN DONAGUE, DIGITAL EQ	NO	NO					0		
CS40231	VEH. FUEL TANK		RUPTURE		---	NOT USED	NO	LT. RICKHEIT, STATE POLIC	NO	NO					1		
CS40099	U.S.T.		LEAK		---	NOT USED	NO	O. CARNAVAL, LITTLETON FD	NO	---					72		
CS40173	TANKER TRUCK		RUPTURE		---	NOT USED	NO		NO	NO					1		
CS40236	VEH. FUEL TANK		M.V. ACCIDENT		---	NOT USED	NO		NO	NO					1		
CS40306	U.S.T.		LEAK		---	NOT USED	NO		NO	NO					1		
CS40145	U.S.T.		OTHER RELEASE > FAILED P-PIPE		---	NOT USED	NO	GARY MCCANN, LITTLETON FI	NO	YES					0		
CS40061	ABOVE-GROUND TANK		OVERFILL		---	NOT USED	NO	RALPH MEIR, EXXON	NO	NO					1		
CS40423	DRUM		OTHER RELEASE > BUMPED BY TRUCK		---	NOT USED	NO	LANCE BIRBINS, HOMEOWNER	NO	NO					1		
CS40169	U.S.T.		TANK REMOVAL		---	NOT USED	NO	GERRY MCCARTHY, CIVIL ENG	NO	NO					1		
CS40231	VEH. FUEL TANK		M.V. ACCIDENT		---	NOT USED	NO	D. EDSONNE, APPLE	NO	---					1		
CS40271	TANKER TRUCK		OVERFILL		---	NOT USED	NO	NELSON RASH	NO	---					1		
CS40332	U.S.T.		TANK REMOVAL		---	NOT USED	NO	KENNY/CORCORAN STATE PD	NO	---					1		
CS40098	DRUM		RUPTURE		---	NOT USED	NO		NO	---					1		
CS40129	TANKER TRUCK		LEAK		---	NOT USED	NO	CLEAN HARBORS	NO	---					1		
CS40134	OTHER SOURCE > MOTOR		M.V. ACCIDENT		---	NOT USED	NO	DOH CRAIG PD	NO	---					572		
CS40274	VEH. FUEL TANK		OVERFILL		---	NOT USED	NO	BILL LINSEY	NO	---					1		
CS40345	TRANSFORMER		LEAK		---	NOT USED	NO		NO	---					617		
CS40400	---		DIAPHRAGM		---	NOT USED	NO	T. CRICKETT	NO	---					1		
CS40409	TANKER TRUCK		DIAPHRAGM		---	NOT USED	NO	ANONYMOUS	NO	---					1		
CS40474	---		SPILL		---	NOT USED	NO	P. CASSIMAR, LITTLETON BOH	NO	---					1		
CS40618	OTHER SOURCE > MYSTERY		DIAPHRAGM		---	NOT USED	NO		NO	---					331		
CS40659	U.S.T.		SPILL		---	NOT USED	NO	CLEAN HARBORS	NO	---					287		
CS40189	U.S.T.		TANK REMOVAL		---	NOT USED	NO		NO	YES					1		
CS40231	VEH. FUEL TANK		TANK REMOVAL		---	NOT USED	NO	ALAN CATENE	NO	NO					1		
CS40249	VEH. FUEL TANK		RUPTURE		---	NOT USED	NO		NO	NO					1		
CS40300	VEH. FUEL TANK		RUPTURE		---	NOT USED	NO		NO	NO					1		
CS40303	VEH. FUEL TANK		RUPTURE		---	NOT USED	NO		NO	NO					1		
CS40338	DRUM		RUPTURE		---	NOT USED	NO		NO	NO					1		
CS40471	VEH. FUEL TANK		SPILL		---	NOT USED	NO		NO	NO					1		
CS40427	TRANSFORMER		LEAK		---	NOT USED	NO		NO	NO					1		
CS40610	ABOVE-GROUND TANK		OVERFILL		---	NOT USED	NO	ZECCO	NO	NO					1		

SPILL ID	SITE ID	SPILL NAME	ADDRESS	TOWN	HAUF	COUNTY	REGION	ZIP	STAFF LEAD	FIRST DATE	LAST DATE	TOP DATE	SPILL DATE
C92-0309	0000	CONTAMINATED SOIL	225 GREAT RD.	LITTLETON			MIDDLESEX	01460	DUNLOP, C	19930617	6/7/1990	5/16/1990	
C92-0352	0000	MOBIL OIL CORP.	500 KING ST.	LITTLETON			MIDDLESEX	01460	BRESNAHAN, C	19930617	6/17/1993	6/6/1990	
C92-0398	0000	MOBIL	500 KING ST.	LITTLETON			MIDDLESEX	01460	BRESNAHAN, C	19930121	6/16/1993	6/14/1990	
C92-0409	0000	SERVICE CHEMICAL CORP.	RTE. 495 (NEAR RTE. 2)	LITTLETON			MIDDLESEX	01460	COOPERMAN, S	19930617	7/6/1990	7/2/1990	
C92-0474	0000	MOBIL OIL CORP.	500 KING ST.	LITTLETON			MIDDLESEX	01460	BRESNAHAN, C	19930617	6/17/1993	6/7/1990	
C92-0758	0000	LITTLETON LIGHT & WATER	WOODBRIDGE DR. POLE #1	LITTLETON			MIDDLESEX	01460	ELIUS, J	19930617	12/17/1990	11/25/1990	6/7/1990
C91-0255	2-1092	NATIONAL FREIGHT CO.	194 AYER RD.	LITTLETON			MIDDLESEX	01460	BRESNAHAN, C	19930617	12/17/1990	11/25/1990	6/7/1990
C91-0336	0000	LOWELL SAVINGS BANK	5 BRUCE ST.	LITTLETON			MIDDLESEX	01460	BRESNAHAN, C	19930617	12/17/1990	11/25/1990	6/7/1990
C91-0336	0000	LEXINGTON SAVINGS BANK	370 HAWKWOOD AVE	LITTLETON			MIDDLESEX	01460	BRESNAHAN, C	19930617	12/17/1990	11/25/1990	6/7/1990
C91-0432	0000	TOYHOF LITTLETON	20 FOSTER ST.	LITTLETON			MIDDLESEX	01460	COOPERMAN, S	19930617	12/17/1990	11/25/1990	6/7/1990
C91-0505	0000	WELCHES AUTOMOTIVE	277 GREAT RD.	LITTLETON			MIDDLESEX	01460	BRESNAHAN, C	19930617	12/17/1990	11/25/1990	6/7/1990
C92-0151	0000	DUNN INVESTMENT - TRUST	326 GREAT RD.	LITTLETON			MIDDLESEX	01460	PHILLIPS, B	19930617	12/17/1990	11/25/1990	6/7/1990
C92-0218	2-0297	TANK REMOVAL	364 NEWTOWN RD.	LITTLETON			MIDDLESEX	01460	PHILLIPS, B	19930617	12/17/1990	11/25/1990	6/7/1990
C92-0239	0000	HYDRAULIC FLUID	66 AYER RD.	LITTLETON			MIDDLESEX	01460	PHILLIPS, B	19930617	12/17/1990	11/25/1990	6/7/1990
C92-0259	0000	LEAKING TANK AT RESIDENCE	69 POWERS RD.	LITTLETON			MIDDLESEX	01460	PHILLIPS, B	19930617	12/17/1990	11/25/1990	6/7/1990
C92-0304	0000	MOBIL SERVICE STATION	500 KING ST.	LITTLETON			MIDDLESEX	01460	PHILLIPS, B	19930617	12/17/1990	11/25/1990	6/7/1990
C92-0315	0000	FUEL TANK LEAK AT RESIDENCE	20 MOORE LAKE	LITTLETON			MIDDLESEX	01460	PHILLIPS, B	19930617	12/17/1990	11/25/1990	6/7/1990
C92-0372	0000	AUTHORIZED CLEANING	RTE. 119	LITTLETON			MIDDLESEX	01460	SPANO, P	19930617	12/17/1990	11/25/1990	6/7/1990
C92-0439	0000	BEAVER BROOK	NEAR 225 BEAVER BROOK RD.	LITTLETON			MIDDLESEX	01460	SPANO, P	19930617	12/17/1990	11/25/1990	6/7/1990
C92-0514	0000	VERVEINE	20 HAWKWOOD RD.	LITTLETON			MIDDLESEX	01460	PHILLIPS, B	19930617	12/17/1990	11/25/1990	6/7/1990
C92-0530	0000	FORMER MANUFACTURING PLANT	548 NEWTOWN RD.	LITTLETON			MIDDLESEX	01460	PHILLIPS, B	19930617	12/17/1990	11/25/1990	6/7/1990
C92-0554	0000	TOWN HIGHWAY DEPT.	WHITCOMB ST.	LITTLETON			MIDDLESEX	01460	DUNNE, B	19930617	12/17/1990	11/25/1990	6/7/1990
C92-0562	0000	VERY FINE FOODS	1 HAWKWOOD RD.	LITTLETON			MIDDLESEX	01460	DUNNE, B	19930617	12/17/1990	11/25/1990	6/7/1990
C92-0611	0000	ATLAS FUEL CO.	5 CHEOKERBERRY LN.	LITTLETON			MIDDLESEX	01460	DUNNE, B	19930617	12/17/1990	11/25/1990	6/7/1990
C92-0611	0000	ABANDONED DRUM LEAKING	EASTBOUND RAMP RTE. 119 & 495	LITTLETON			MIDDLESEX	01460	CHILD, N	19930617	12/17/1990	11/25/1990	6/7/1990
C92-0611	0000	H.B. KNOWLES	124 FOSTER ST.	LITTLETON			MIDDLESEX	01460	DUNNE, B	19930617	12/17/1990	11/25/1990	6/7/1990
C92-0611	0000	OL SPILL AT RESIDENCE	RTE. 495	LITTLETON			MIDDLESEX	01460	SCAGAS, L	19930617	12/17/1990	11/25/1990	6/7/1990
C92-0611	0000	LAKE RIVER TRANSPORT	7 BEAVER BROOK RD.	LITTLETON			MIDDLESEX	01460	DUNNE, B	19930617	12/17/1990	11/25/1990	6/7/1990
C92-0611	0000	OIL RELEASE	HARTWELL AVE & RTE. 119	LITTLETON			MIDDLESEX	01460	SCAGAS, L	19930617	12/17/1990	11/25/1990	6/7/1990
C92-0611	0000	POTASSIUM HYDROXIDE	153 TAYLOR ST.	LITTLETON			MIDDLESEX	01460	SCAGAS, L	19930617	12/17/1990	11/25/1990	6/7/1990
C92-0611	0000	DIGITAL EQUIPMENT CORP.		LITTLETON			MIDDLESEX	01460	SCAGAS, L	19930617	12/17/1990	11/25/1990	6/7/1990

C90-0309	6/8/1990	04:30PM	YES	PETROLEUM	VIRGIN	DIESEL FUEL	NONE	11-50
C90-0352			YES	PETROLEUM	WASTE	HYDRAULIC FLUID	NONE	11-50
C90-0398			YES	HAZARDOUS	WASTE	OTHER MATERIAL	NONE	UNKNOWN
C90-0406	7/2/1990 03:00PM	05:00PM	YES	NEITHER		OTHER MATERIAL	NONE	UNKNOWN
C90-0474	8/7/1990		YES	PETROLEUM	WASTE	WASTE OIL	NONE	UNKNOWN
C90-0758	11/26/1990 07:00PM	04:30PM	YES	PETROLEUM	WASTE	WASTE OIL	NONE	UNKNOWN
C91-0235	5/28/1991		YES	PETROLEUM	VIRGIN	#2 FUEL OIL	UNKNOWN	UNKNOWN
C91-0315	6/12/1991		YES	PETROLEUM	WASTE	WASTE OIL	UNKNOWN	UNKNOWN
C91-0432	6/27/1991	03:05PM	YES	PETROLEUM	VIRGIN	#4 FUEL OIL	UNKNOWN	UNKNOWN
C91-0505	8/21/1991		YES	PETROLEUM	WASTE	#2 FUEL OIL	UNKNOWN	UNKNOWN
C91-0545	8/24/1991	04:00PM	YES	NEITHER	WASTE	OTHER MATERIAL	NONE	51-100
C92-0151	4/10/1992		YES	PETROLEUM	VIRGIN	#2 FUEL OIL	NONE	UNKNOWN
C92-0216	5/11/1992 09:00AM	01:10PM	YES	PETROLEUM	VIRGIN	#2 FUEL OIL	UNKNOWN	1-10
C92-0236	5/22/1992 07:45AM	09:25AM	YES	PETROLEUM	VIRGIN	#2 FUEL OIL	NONE	UNKNOWN
C92-0256	6/21/1992 11:25AM	09:00AM	YES	BOTH	WASTE	OTHER MATERIAL	WASTE OIL	UNKNOWN
C92-0304	6/18/1992 02:30PM	11:45AM	YES	PETROLEUM	VIRGIN	#2 FUEL OIL	NONE	UNKNOWN
C92-0315	6/24/1992	02:45PM	YES	PETROLEUM	VIRGIN	#2 FUEL OIL	NONE	UNKNOWN
C92-0372	7/27/1992	10:00AM	YES	PETROLEUM	VIRGIN	JET FUEL	NONE	11-50
C92-0436	8/29/1992 09:00AM	10:20AM	YES	PETROLEUM	VIRGIN	#2 FUEL OIL	UNKNOWN	UNKNOWN
C92-0514	10/18/1992 10:30AM	11:35AM	YES	PETROLEUM	WASTE	OTHER MATERIAL	CONT SOIL	UNKNOWN
C92-0530	10/21/1992	03:15PM	YES	PETROLEUM	WASTE	DIESEL FUEL	NONE	11-50
C92-0564	11/12/1992 09:15AM		YES	PETROLEUM	VIRGIN	TRANSFORMER OIL	NONE	UNKNOWN
C92-0593	11/28/1992 02:00PM	03:30PM	YES	PETROLEUM	VIRGIN	#2 FUEL OIL	NONE	UNKNOWN
C92-0902	12/11/1992	02:30PM	YES	PETROLEUM	VIRGIN	DIESEL FUEL	NONE	11-50
C92-0911	12/21/1992	10:20AM	YES	PETROLEUM	VIRGIN	GASOLINE	NONE	UNKNOWN
C93-0136	3/22/1993 08:20PM	04:30PM	YES	PETROLEUM	WASTE	GASOLINE	UNKNOWN	SHEEN
C93-0259			YES	HAZARDOUS	WASTE	DIESEL FUEL	01332-21-4	UNKNOWN
C93-0303	6/15/1993 03:00PM	03:00PM	YES	PETROLEUM	VIRGIN	ASBESTOS	NONE	1-10
C93-0316	6/28/1993	04:55PM	YES	PETROLEUM	VIRGIN	GASOLINE	NONE	1-10
C93-0330	7/6/1993 04:30PM	12:45PM	YES	NEITHER		OTHER MATERIAL	PAINT FUMES	UNKNOWN
C93-0366	7/30/1993	11:00AM	YES	PETROLEUM	VIRGIN	#4 FUEL OIL	NONE	UNKNOWN

SPILL ID	UNITS	APPROXIMATE ACTL	SOURCE	O SOURCE	INCIDENT	O INCIDENT	TYPE	CONTRACTOR	SA	REFERENCE	NOTIF	PH/UST	PREP	REI
C90-0309	GALLONS	GALLONS	VEH. FUEL TANK		LEAK		---	NOT USED	NO	PETER FIGER/PUNTY SUPREME		NO		
C90-0332	GALLONS	GALLONS	PIPE/HOSE/LINE		RUPTURE		---	NOT USED	NO	TOOD DRESSER/TOWN		NO		
C90-0399			OTHER SOURCE >	DISPOSAL	DUMPING		---	NOT USED	NO	M COLOLA/FOIC		---		
C90-0406			U.S.T.		TANK REMOVAL		---	NOT USED	NO	TED ROBERT/LAKESHORE ENV		---		
C90-0472			OTHER SOURCE >	DUMPS/TER	SPILL		---	NOT USED	NO	GEORGE COSTELLO/EPS		---		
C90-0759			OTHER SOURCE >	VEHICLE			---	NOT USED	NO			---		
C91-0125			U.S.T.		LEAK		---	NOT USED	NO	CHRIS KINGMAN/HMM		NO		
C91-0315			OTHER SOURCE >	VEHICLE	DUMPING		---	NOT USED	NO	STEPHEN GARNER/		---		
C91-0335			U.S.T.		LEAK		---	NOT USED	NO	MARGARET MORAN/HOUSE AUTH		---		
C91-0432			U.S.T.		LEAK		---	NOT USED	NO	STEVE FERREY/MINTX & LEVIN		---		
C91-0505	GALLONS	GALLONS	ABOVE-GROUND TANK		LEAK		---	NOT USED	NO	CHIEF JOHN CUTLER/FD		---		
C91-0545			U.S.T.		LEAK		---	NOT USED	NO	JIM DUNN/UNITS TANK SERVICE		---		
C92-0151	GALLONS	GALLONS	ABOVE-GROUND TANK		OTHER RELEASE >	VANDALISM	---	NOT USED	NO	CAPT WAINSTAFF/FD		---		
C92-0218			A.S.T.		SPILL		---	NOT USED	NO	SCOTT STEVENSE/AGLE MORGAGE		---		
C92-0230			U.S.T.		OTHER RELEASE >	UNIK	---	NOT USED	NO	DAVE COME/ENPRO		---		
C92-0258			U.S.T.		TANK REMOVAL		---	NOT USED	NO	STEVE SMITH/AIRCO		---		
C92-0304			PIPE/HOSE/LINE		LEAK		---	NOT USED	NO	BILL HUTCHINSON		---		
C92-0315	GALLONS	GALLONS	VEH. FUEL TANK		SPILL		---	NOT USED	NO	TOM COMEAU/LOGAN FD		---		
C92-0372			U.S.T.		TANK REMOVAL		---	NOT USED	NO	SCOTT MCISAGE		---		
C92-0439			OTHER SOURCE >	UNIK	OTHER RELEASE >	UNIK	---	NOT USED	NO	DAVE SKERRETT		---		
C92-0514	GALLONS	GALLONS	BOAT		LEAK		---	NOT USED	NO	PO DOBSON/USCG		---		
C92-0530	GALLONS	GALLONS	TRANSFORMER		LEAK		---	NOT USED	NO	DAVE MCCARTHY/MASS ELECTRIC		---		
C92-0564	CUBIC YDS	CUBIC YDS	U.S.T.		LEAK		---	NOT USED	NO	GARY/MS TANK		---		
C92-0593	GALLONS	GALLONS	VEH. FUEL TANK		OVERFILL		---	NOT USED	NO	MARY DALEY/FD		---		
C92-0602			U.S.T.		TANK REMOVAL		---	NOT USED	NO	BRIAN HARDY/SE		---		
C92-0611	CUBIC YDS		U.S.T.		LEAK		---	NOT USED	NO	KAREN DURGIBOH		---		
C93-0136			OTHER SOURCE >	UNIK	OTHER RELEASE >	SLOPPY HOUSE/KEE	---	NOT USED	NO	ANONYMOUS		---		
C93-0256	CUBIC YDS		VEH. FUEL TANK		DUMPING		---	NOT USED	NO	RICHARD WILLIS		---		
C93-0303	GALLONS	GALLONS	OTHER SOURCE >	SPRAYER	LEAK		---	NOT USED	NO	RANDY RICE/PA		---		
C93-0315			U.S.T.		OVERFILL		---	NOT USED	NO	AMY FOLEY		---		
C93-0330	CUBIC YDS	CUBIC YDS	OTHER SOURCE >		OVERFILL		---	NOT USED	NO	STEVE/ALLEN CORP		---		
C93-0366	CUBIC YDS	CUBIC YDS	U.S.T.		OVERFILL		---	NOT USED	NO	STEVE/ALLEN CORP		---		

SPILL ID	LUST	EO	CATEGORY	DAYS	TO	CLS
C90-Q309				48		
C90-Q352				10		
C90-Q398				0		
C90-Q406				1		
C90-Q474				0		
C90-Q758				0		
C91-Q285				0		
C91-Q315				32		
C91-Q338				0		
C91-Q432				0		
C91-Q505				1		
C91-Q545				10		
C92-Q151				1		
C92-Q218				3		
C92-Q735				0		
C92-Q758				0		
C92-Q304				0		
C92-Q315				1		
C92-Q372				0		
C92-Q435				0		
C92-Q514				1		
C92-Q530				42		
C92-Q564				0		
C92-Q593				1		
C92-Q602				0		
C92-Q611				0		
C93-Q135				1		
C93-Q259				1		
C93-Q303				1		
C93-Q315				1		
C93-Q330				0		
C93-Q356				0		



Site/Reportable Release Look Up

- RTN:
- Site Name/Location Address:
- Street:
- City: LITTLETON
- Status:
- Chemical Type:

Search Results

Release Tracking Number(RTN)	City/Town	Release Address	Site Name/Location Address	Reporting Category	Notification Date	Compliance Status	Date	Phase	RAO Class	Chemical Type	Release Tracking Number(RTN)
2-0010171	LITTLETON	RTE 495 N	2 MIN OF RTE 2 EXIT	TWO HR	1/31/1994	RAO	2/10/1994	PHASE II	A1	Oil	2-0010171
2-0011226	LITTLETON	265 FOSTER ST	ALLIED PLYWOOD	TWO HR	5/10/1996	RAO	7/15/1996		A2	Oil	2-0011226
2-0010186	LITTLETON	500 KING ST	ARCHER MOBIL STATION #01-787	TWO HR	2/7/1994	RAO	6/30/1994		A1	Oil	2-0010186
2-0010961	LITTLETON	451 NEW TOWN RD	AT&T BUILDING	72 HR	10/19/1995	RAO	12/18/1995		A1	Hazardous Material	2-0010961
2-0011018	LITTLETON	347 KING ST	BADGES FUNERAL HOME	120 DY	11/22/1995	RAO	11/22/1995		B1	Oil and Hazardous Material	2-0011018
2-0010072	LITTLETON	KING ST	BROOK OFF ROADWAY	TWO HR	11/9/1993	RAO	7/8/1994		A1	Oil	2-0010072
2-0012568	LITTLETON	256 AYER RD	CITGO STATION	72 HR	12/23/1998	TIER 1C	6/2/2000			Oil	2-0012568
2-0000425	LITTLETON	55 WHITE ST	CONCORD LUMBER DEV	NONE	1/15/1989	RAO	7/31/1995				2-0000425
2-0000939	LITTLETON	16 MANION PLACE	DELL DALE FARM	NONE	10/1/1992	WCSFRM	2/2/1998				2-0000939
2-0000883	LITTLETON	326 GREAT RD	DUNN INVESTMENT TRUST	NONE	5/11/1992	LSPNFA	2/12/1996			Oil	2-0000883
2-0013566	LITTLETON	46 BEAVER BROOK RD	FINDLAY RESIDENCE	120 DY	11/21/2000	RAO	10/4/2001		A2	Oil and Hazardous Material	2-0013566
2-0000769	LITTLETON	537 GREAT RD	GRASON STADLER	NONE	10/15/1990	WCSFRM	6/28/1993				2-0000769
2-0012117	LITTLETON	39 AYER RD	HIGHWAY DEPT GARAGE	TWO HR	2/25/1998	RAO	4/21/1998		A1	Oil	2-0012117
2-0012253	LITTLETON	39 AYER RD	HYDRAULIC OIL RELEASE	TWO HR	6/16/1998	RAO	8/21/1998		A2		2-0012253
2-0000810	LITTLETON	500 KING ST	KING STREET MOBIL 01 787	NONE	12/5/1990	RAO	12/30/1994		A2		2-0000810

2-0000297	LITTLETON	80 AYER RD	LONESTAR SAN VEL	NONE	1/15/1989	RAO	10/1/2002	PHASE III	A3	Oil	2-0000297
2-0014006	LITTLETON	TAYLOR ST	MATBOB CORP	120 DY	9/24/2001	TIER 1C	4/26/2002	PHASE III		Oil and Hazardous Material	2-0014006
2-0011152	LITTLETON	TAYLOR ST	MHD FACILITY 35	120 DY	3/4/1996	RAO	2/28/1997		A2	Oil	2-0011152
2-0011151	LITTLETON	196 AYER RD	MHD FACILITY 36	120 DY	3/4/1996	RAO	3/3/1997		A2	Oil and Hazardous Material	2-0011151
2-0010288	LITTLETON	RTE 495 N	NOF RTE 119	TWO HR	4/27/1994	RAO	8/30/1994		A1	Oil	2-0010288
2-0010782	LITTLETON	RTE 495 S	NOF RTE 119	TWO HR	5/22/1995	RAO	7/21/1995		A1	Oil	2-0010782
2-0000256	LITTLETON	527 GREAT RD	NAVTEC INCORPORATED	NONE	1/15/1989	WCSPRM	8/18/1994		A1	Oil	2-0000256
2-0010532	LITTLETON	96 TAYLOR ST	NO LOCATION AID	TWO HR	11/2/1994	RAO	1/5/1995		A1	Oil	2-0010532
2-0013120	LITTLETON	235 GREAT RD	NO LOCATION AID	72 HR	1/10/2000	RAO	5/5/2000		A1	Oil	2-0013120
2-0014255	LITTLETON	225 GREAT RD	NO LOCATION AID	120 DY	3/4/2002	UNCLASSIFIED	3/4/2002		A1	Oil	2-0014255
2-0000083	LITTLETON	235 GREAT RD	OLD COLONY GAS STATION	NONE	1/15/1987	RAO	3/14/1997		A2	Hazardous Material	2-0000083
2-0013416	LITTLETON	2 OMEGA WAY	OMEGA REALTY LLC	120 DY	8/3/2000	RAO	8/3/2001		A2	Oil	2-0013416
2-0000352	LITTLETON	45 PORTER RD	ORANGEWOOD REALTY TRUST	NONE	10/15/1988	RAO	6/4/1998	PHASE V	C		2-0000352
2-0012154	LITTLETON	69 HARTWEL AVE	RESIDENCE	TWO HR	3/20/1998	RAO	12/3/1998		A2	Oil	2-0012154
2-0012184	LITTLETON	1 FOSS PL	RESIDENCE	TWO HR	4/8/1995	RAO	7/30/1998		A2		2-0012184
2-0013742	LITTLETON	4 CURTIS LN	RESIDENCE	120 DY	3/19/2001	RAO	2/20/2002		A2	Oil	2-0013742
2-0014014	LITTLETON	GREAT RD AND LAWRENCE ST	ROADWAY ACCIDENT	TWO HR	9/29/2001	RAO	12/21/2001		A1	Oil	2-0014014
2-0011796	LITTLETON	GW STANTON HWY	ROADWAY RELEASE	TWO HR	7/3/1997	RAO	7/9/1998		A1	Oil	2-0011796
2-0012220	LITTLETON	RTE 495	ROUTE 119 EXIT RAMP	TWO HR	5/15/1998	RAO	7/2/1998		A1	Hazardous Material	2-0012220
2-0011745	LITTLETON	GREAT RD	RTE 119 EXIT 31	TWO HR	5/30/1997	RAO	8/1/1997		A1	Oil	2-0011745
2-0010828	LITTLETON	RTE 495 S	RTE 2	TWO HR	6/19/1995	RAO	8/2/1995		A1	Oil	2-0010828
2-0014230	LITTLETON	RTE 495 SOUTHBOUND	RTE 2 - RTE 495 INTERCHANGE	TWO HR	3/18/2002	RAO	10/4/2002		A2		2-0014230
2-0010183	LITTLETON	BRUCE ST	RTE 2A RTE 110	120 DY	12/14/1993	RAO	12/14/1993		B1	Hazardous Material	2-0010183
2-0011081	LITTLETON	RTE 495 S	S OF EXIT 30	TWO HR	12/5/1996	RAO	3/25/1996		A1	Oil	2-0011081
2-0000929	LITTLETON	460 KING ST	SHELL SERVICE STATION	NONE	9/30/1992	RAO	5/1/1997	PHASE II	NC		2-0000929
2-0011750	LITTLETON	25 KING ST	SUNOCO STA	120 DY	6/2/1997	TIER 1C	6/1/1998			Oil and Hazardous Material	2-0011750
2-0011803	LITTLETON	WHITCOMB AVE	TOWN WELL 1	TWO HR	7/15/1997	RAO	9/19/1997		B1	Hazardous Material	2-0011803
2-0011106	LITTLETON	RTE 495 S	TRACTOR TRAILER ACCIDENT	TWO HR	2/14/1996	RAO	4/7/1996		A2	Oil	2-0011106
2-0012825	LITTLETON	RTE 495 EXIT 29B	TRUCK RELEASE	TWO HR	6/11/1999	RAO	10/18/1999		A2		2-0012825
2-0000082	LITTLETON	HARVARD RD	VEREYNE	NONE	1/15/1987	RAO	5/6/1994		NC	Oil	2-0000082
2-0013242	LITTLETON	1 HARVARD RD	VEREYNE PROD	72 HR	4/14/2000	RAO	8/14/2000		A2	Oil	2-0013242
2-0013799	LITTLETON	194 AYER RD	VINELAND CONST CO	120 DY	4/27/2001	RAO	5/16/2001		B1	Oil	2-0013799
2-0001092	LITTLETON	194 AYER RD	VINELAND CONSTRUCTION CO	NONE	9/21/1993	DEPNDS	4/12/1996			Oil	2-0001092

2-0000221	LITTLETON	25 KING ST	WAYSIDE EXXON STATION	NONE	4/30/1987	RAO	2/13/1998	PHASE V	C	Oil and Hazardous Material	2-0000221
Total of 49 Records Matched.											

**
Search Again **
Definitions **

[Contact: dbakely@state.ma.us]
 [Site] [BWSC Publications] [BWSC Home] [DEP Home] [Privacy Policy]

Appendix D

Section 504: Handicapped Accessibility Self-Evaluation

APPENDIX D

Letters certifying the designation of an ADA Coordinator, grievance procedures and public notification processes have been included within this Appendix. Due to the size and scope of the individual parcel inventory, the Self-Evaluation will be available upon request from the the Town of Littleton ADA Coordinator or the Open Space and Recreation Plan Implementation Committee.



**OFFICE OF THE
BOARD OF SELECTMEN**

37 SHATTUCK STREET, P.O. BOX 1305
LITTLETON, MASSACHUSETTS 01460
(978) 952-2311

January 27, 2003

Rita Biagioni, Chairperson
Littleton Open Space and
Recreation Plan Implementation Committee
P O Box 362
Littleton, MA 01460

RE: Open Space and Recreation Plan Update

Dear Rita,

It is my understanding that you require a letter from me stating that the Town of Littleton's employment practices are consistent with the provisions of the Americans with Disabilities Act. You may consider this to be that letter and further more, to the best of my knowledge, the Town of Littleton is in compliance with all applicable Federal and State regulations and policies regarding employment practices.

I hope this is helpful and please call me if you need further assistance.

Sincerely,


TIMOTHY D. GODDARD,

Town Administrator

TDG:lk

Cc: Holly Johnson, Beals & Thomas
Jennifer Soper, Exec. Office Environmental Affairs

Town of Littleton

Section 504 Self-Evaluation Plan

I. Introduction

The Town of Littleton, Massachusetts is in the process of updating its Open Space Plan for Conservation and Recreation. Part of the update has included the Section 504 Self-Evaluation Plan of conservation and Recreation Land in the Town of Littleton.

A complete facility inventory was completed by the Section 504 Committee. A summary of the make-up of the individuals appointed to this Committee is discussed under Part I, Section V of this Self-Evaluation Plan Report. This inventory included all properties under the jurisdiction of the Littleton Recreation Commission and the Littleton Conservation Commission. Based on this inventory, a transition plan was developed by the Town's Commission on Disability that was approved by the Town Administrator. This transition plan has been incorporated into various areas of the overall Open Space Plan. Additionally, funding for the transition plan has been included in the Town's five-year capital plan. The transition plan is discussed in detail under Part II, Section I of this report.

In addition to the inventory and transition plan, other administrative requirements were addressed during the self-evaluation. Timothy D. Goddard, the Town Administrator was appointed by the Board of Selectmen as the 504 Coordinator (Part I, Section II). In addition, the Town's Grievance Procedure was updated and approved by the Board of Selectmen (Part I, Section III). All Departments were notified of the requirement that the public and employees must be made aware that the Town of Littleton does not discriminate on the basis of disability (Part I, Section IV).

This has been a very thorough and aggressive Self-Evaluation. With the proper funding and education, the Town of Littleton will meet the needs of the disabled.



**OFFICE OF THE
BOARD OF SELECTMEN**

37 SHATTUCK STREET, P.O. BOX 1305
LITTLETON, MASSACHUSETTS 01460
(978) 952-2311

To Whom It May Concern:

The purpose of this letter is to inform you that the Board of Selectmen for the Town of Littleton has unanimously voted to designate Town Administrator Timothy D. Goddard as the 504 Coordinator for the Town of Littleton.

Very truly yours,
LITTLETON BOARD OF SELECTMEN


PAUL J. GLAVEY, Chairman

BOS:lk



**OFFICE OF THE
BOARD OF SELECTMEN**

37 SHATTUCK STREET, P.O. BOX 1305
LITTLETON, MASSACHUSETTS 01460
(978) 952-2311

TOWN OF LITTLETON

ADA GRIEVANCE PROCEDURE

This Grievance Procedure is established to meet the requirements of the Americans with Disabilities Act. It may be used by anyone who wishes to file a complaint alleging discrimination on the basis of disability in employment practices and policies of the provision of services, activities, programs, or benefits by the Town of Littleton.

The complaint should be in writing and contain information about the alleged discrimination such as name, address, phone number of complainant and location, date, and description of the problem. Alternative means of filing complaints, such as personal interviews or a tape recording of the complaint, will be available for persons with disabilities upon request.

The complaint should be submitted by the grievant and/or his/her designee as soon as possible but no later than 60 calendar days after the alleged violation to:

TIMOTHY D. GODDARD, - ADA COORDINATOR
(978) 952-2311
37 Shattuck Street
P O Box 1305
Littleton, MA 01460

Within 15 calendar days after receipt of the complaint, Timothy D. Goddard will meet with the complainant to discuss the complaint and possible resolutions. Within 15 calendar days after the meeting, Timothy D. Goddard will respond in writing, and, where appropriate, in a format accessible to the complainant, such as large print, Braille, or audiotope. The response will explain the position of the Town of Littleton and offer options for substantive resolution of the complaint.


If the response by Timothy D. Goddard does not satisfactorily resolve the issue, the complainant and/or his/her designee may appeal the decision of the ADA Coordinator within 15 calendar days after receipt of the response to the Board of Selectmen or their designee.

Within 15 calendar days after receipt of the appeal, the Board of Selectmen or their designee will meet with the complainant to discuss the complaint and possible resolutions. Within 15 calendar days after the meeting, the Board of Selectmen or their designee will respond in writing, and, where appropriate, in a format accessible to the complainant, with a final resolution to the complaint.

All written complaints received by Timothy D. Goddard, appeals to the Board of Selectmen or their designee, and the Town of Littleton will keep responses from the ADA Coordinator and the Board of Selectmen or their designee for at least three years.



OFFICE OF THE
BOARD OF SELECTMEN
37 SHATTUCK STREET, P.O. BOX 1305
LITTLETON, MASSACHUSETTS 01460
(508) 952-2311

To: All Departments, Boards, Committees and Commissions
From: Mark W. Haddad - Town Administrator 
Subject: Public Notification Requirements
Date: December 18, 1996

The purpose of this memorandum is to inform you of language that is required to be added to all Public Notifications. A public notification would include any job advertisement, public hearing, employee notifications, or any other related matter. Specifically, employees and the public must be notified that the Town of Littleton does not discriminate on the basis of disability. Notifications must be in a format that is accessible such as large print, simple language and in an auditory form where appropriate. This clause must also be included in any recruitment materials or publications and that the notice was also made for the visual and learning impaired.

To that end, I would request that all future notifications for any public hearing from any department contain the following language and is printed in a font that is easily read:

"The Town of Littleton does not discriminate on the basis of disability. Further, a signed translation of this hearing will be provided for the hearing impaired upon request by contacting the (department name and phone number) prior to (date a week before the hearing)."

Additionally, all job advertisements should contain the following language:

"The Town of Littleton is an affirmative action/equal opportunity employer and does not discriminate on the basis of disability."

Thank you for your attention to this extremely important matter. Should you have any additional question or concerns with regards to this request, please feel free to contact me.

MWH/rjb

cc: Board of Selectmen

Town of Littleton

Section 504 Self-Evaluation Plan

V. Participation of Individuals with Disabilities

A Section 504 Review Committee was established by the Town Administrator to conduct the Self-Evaluation Access Survey. The Committee was made up of the following individuals representing various organizations:

Timothy D. Goddard – Section 504 Coordinator
Barbara Chapin – Conservation Commission
Lisa Paradis – Park and Recreation Commission
Commission on Disabilities
Commission on Disabilities

A complete listing of all properties under the jurisdiction of the Park and Recreation Commission and the Conservation Commission was reviewed by the Committee. During this review, a Check-List of all properties was established and a separate inventory of each site was completed. The complete inventory is presented in Part II, Section II of this Report. This inventory was then turned over to the Littleton Commission on Disabilities. This Commission is made up of individuals with disabilities in the Town of Littleton, along with other interested residents.

The Commission on Disabilities visited the various sites and developed a Transition Plan to address handicapped accessibility at various properties. The Plan was reviewed by the Section 504 Review Committee and adopted by the Town Administrator. It has been incorporated in to the Town of Littleton's Five Year Capital Plan for implementation. It is our goal to complete all improvements by the year 2005.

Town of Littleton

Section 504 Self-Evaluation Plan

I. Transition Plan

All properties controlled by the Park and Recreation Commission and the Conservation Commission have been reviewed. While there are several properties in Town, not every one is accessible to the general public. Therefore, it is the Town's intention to develop a plan that will address accessibility to those properties that provide access to the general public. Since many of the improvements require funding by the Town of Littleton, these recommendations have been placed in the Town's Capital Plan and will be funded accordingly. It is the Town's intention to make all of these improvements by the year 2005.

The following is a complete listing of the properties that have access and what steps need to be taken to provide handicapped accessibility:

P1 RECREATION DEPARTMENT PLAYING FIELDS

1. Pave parking lots and walks, include handicap spaces in ratio to total spaces as outlined by ADA and state regulations.

P2 FAY PARK

1. Improve site access with a paved ramp to access site from municipal parking lot. Regrade slope in grass area to eliminate steep access.

P3 TOWN BEACH

1. Pave parking lot and walks, include handicap spaces in ratio to total spaces as outlined by ADA and state regulations.

C2 OAKHILL ROAD CONSERVATION SITE

1. Access from Stage Coach road with 2-3 handicapped spaces.
2. Upgrade existing trails to either acceptable hard pack surface or asphalt.

C28 WARREN STREET CONSERVATION SITE

1. Provide handicap spaces in ratio to total spaces as outlined by ADA and state regulations.
2. Provide accessible walkway to a dock or platform to allow access to fishing.

M1 **KING STREET PLAY FIELDS**

1. Pave parking lot and walks and include handicap spaces in ratio to total spaces as outlined by ADA and state regulations.

M6 **LITTLETON COMMON**

1. Provide one handicap space on Common side of Stevens Street.

