

### **Parcel UT-1, Aerial Utility Line & Pole Easement Parcel**

A parcel of land located at the corner of Russell Street and Great Road in the Town of Littleton, in the County of Middlesex, Commonwealth of Massachusetts, bounded and described as follows:

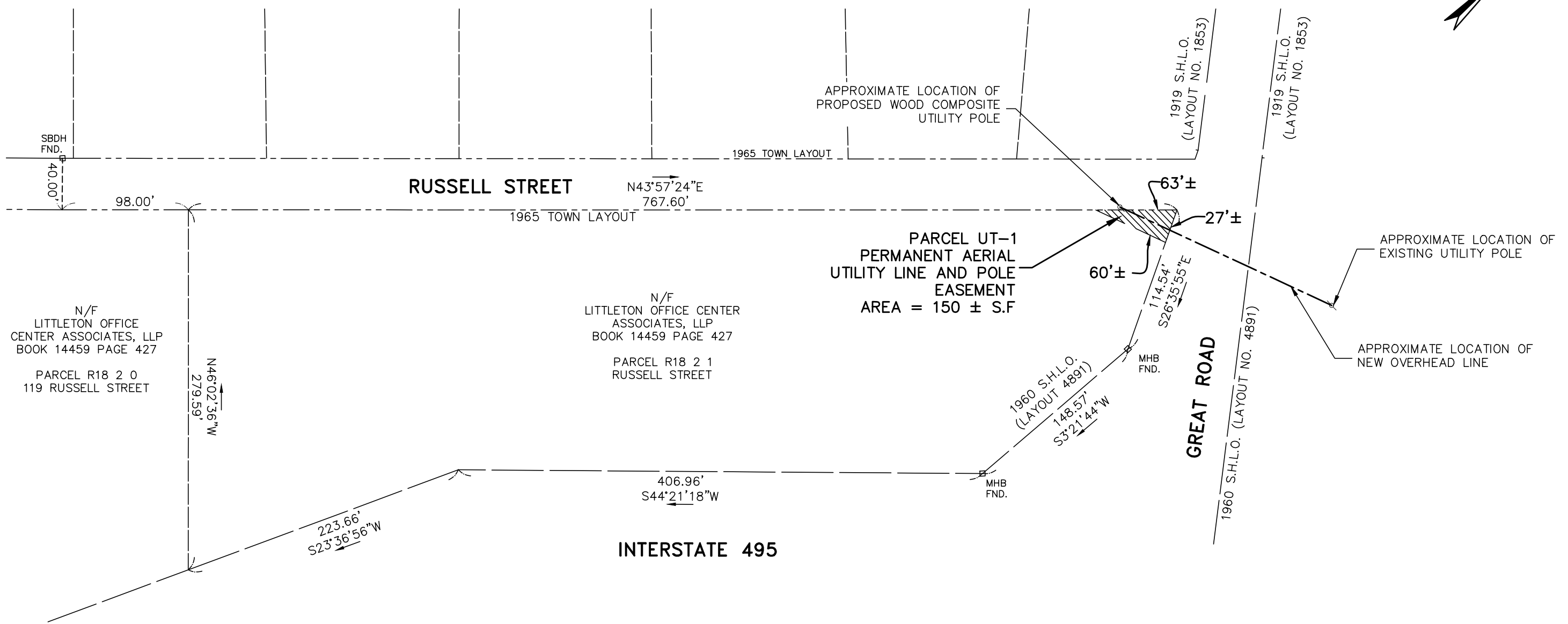
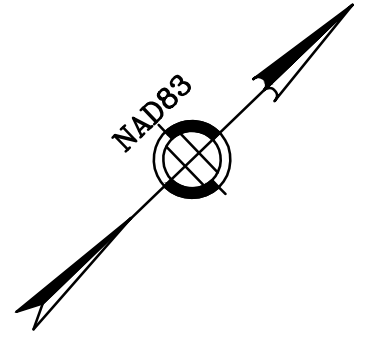
Beginning at a point, said point being at the intersection of the southeasterly street line of Russell Street and westerly street line of Great Road, thence;

S26°35'55"E by said westerly street line Great Road, a distance of about twenty-seven feet (27'±) to a point, thence;

Westerly over land now or formerly of Littleton Office Center Associates, LLP, a distance of about sixty feet (60'±) to a point on the southeasterly street line of Russell Street, thence;

N43°57'24"E by said southeasterly street line of Russell Street, a distance of about sixty-three feet (63'±) to the point of beginning.

The above Aerial utility Line and Pole Easement contains about 150 square feet of land and is shown on a plan entitled "Plan of Land, Town of Littleton, Aerial Utility line and Pole Easement, Russell Street at Great Road" prepared by Green International Affiliates, Inc., dated June 14, 2013.



**NOTES**

1. THE PURPOSE OF THIS PLAN IS TO DEPICT AN EASEMENT TAKING BY THE LITTLETON ELECTRIC LIGHT AND WATER DEPARTMENT FOR AERIAL AND BELOW GRADE UTILITY PURPOSES.
2. THE BOUNDARY AND RIGHT OF WAY LINES SHOWN ON THIS PLAN ARE THE RESULT OF AN INSTRUMENT SURVEY PERFORMED ON THE GROUND BY GREEN INTERNATIONAL AFFILIATES, INC. BETWEEN SEPTEMBER 6, AND SEPTEMBER 28, 2012.

**PLAN REFERENCES:**

PLAN No. 490 OF 1966  
 PLAN No. 882 OF 1983  
 S.H.L.O. No. 1853  
 S.H.L.O. No. 4891  
 1965 TOWN OF LITTLETON, RUSSELL STREET LAYOUT PLAN

MATTHEW LOWRY, PLS # 49625

HOR. SCALE IN FEET

PLAN OF LAND		
<b>TOWN OF LITTLETON</b>		
<b>AERIAL UTILITY LINE AND POLE EASEMENT</b>		
<b>RUSSELL STREET AT GREAT ROAD</b>		
<b>GREEN INTERNATIONAL AFFILIATES, INC.</b> <small>CIVIL &amp; STRUCTURAL ENGINEERS WESTFORD, MASSACHUSETTS</small>		
SCALE: 1" = 80'	PROJECT NO. 12045	
DATE: JUNE 14, 2013	CALC BY: ML DRAWN BY: ML CHECKED BY: SV	SHEET NO. 1 OF 1