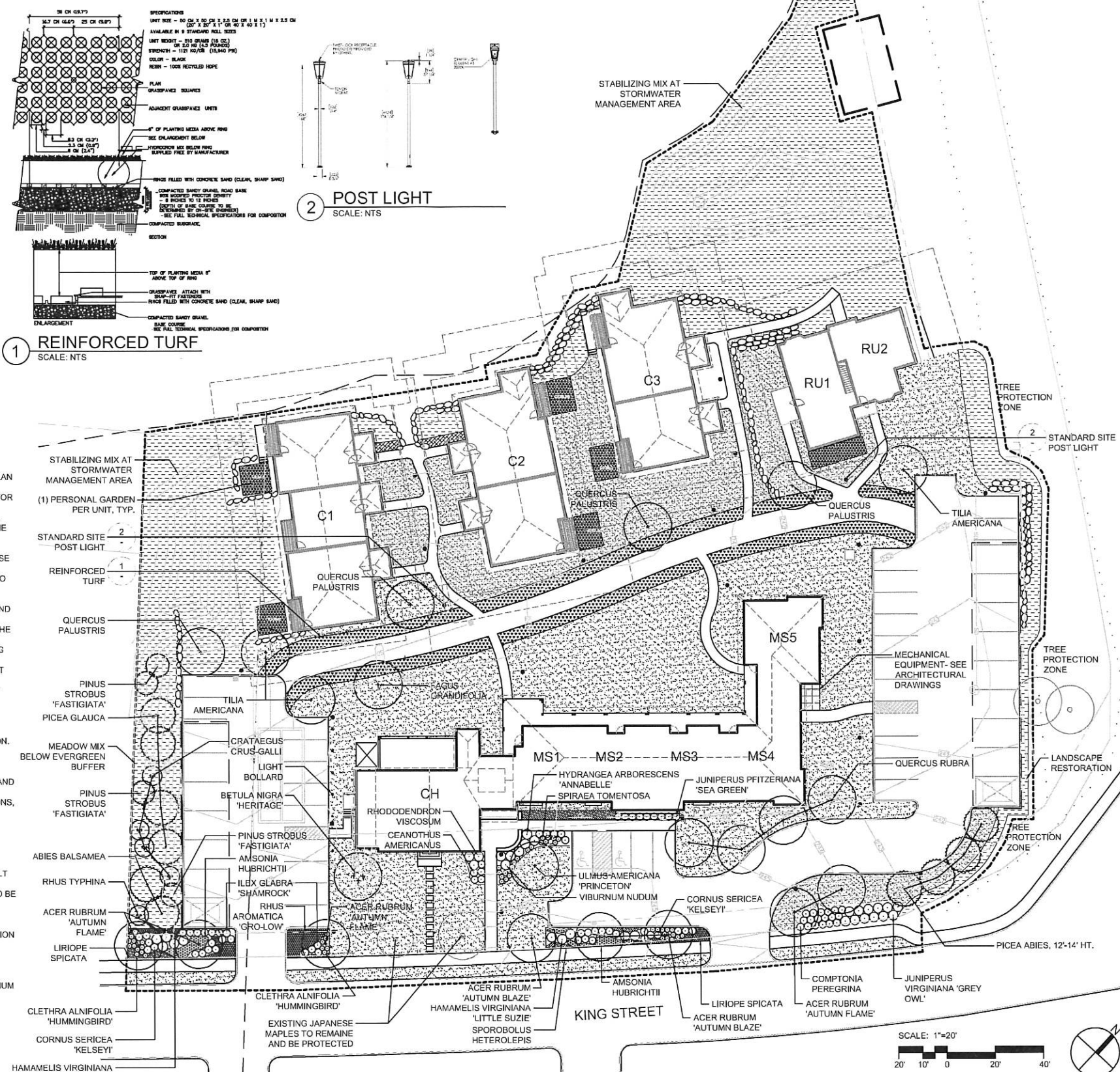


PLANTING SCHEDULE

Symbol	Qty	Botanical Name	Common Name	Size	Root Size	Comments
Deciduous Trees						
AR		<i>Acer rubrum</i> 'Autumn Flame'	Autumn Flame Maple	3-3 1/2" cal.		B&B, Matched
BA		<i>Betula alleghaniensis</i>	Yellow Birch	3-3 1/2" cal.		B&B, Matched
PG		<i>Populus grandidentata</i>	American Sycamore	4 1/2" cal.		B&B, Matched
QR		<i>Quercus rubra</i>	Red Oak	3-3 1/2" cal.		B&B, Matched
QP		<i>Quercus palustris</i>	Pin Oak	3-3 1/2" cal.		B&B, Matched
UA		<i>Ulmus americana</i> 'Princeton'	Princeton Elm	3-3 1/2" cal.		B&B, Matched
TA		<i>Tilia americana</i>	American Linden	3-3 1/2" cal.		B&B, Matched
Evergreen Trees						
AB		<i>Abies balsamea</i>	Balsam Fir	10-12' ht.		B&B, Matched
PA		<i>Picea abies</i>	Norway Spruce	12-14' ht.		B&B, Matched
PG		<i>Picea glauca</i>	White Spruce	12-15' ht.		B&B, Matched
Ornamental Trees						
BR		<i>Betula nigra</i> 'Heritage'	Heritage River Birch	10-12' ht.		B&B, Matched
CG		<i>Crataegus crus-galli var. inermis</i>	Cockspur Hawthorn	10-12' ht.		B&B, Matched
RT		<i>Rhus typhina</i>	Staghorn Sumac	6-8' ht.		B&B, Matched
Shrubs and Groundcover						
CA		<i>Ceanothus americanus</i>	New Jersey Tea	24"-30" ht.	#3 cont.	36" c.c.
CAH		<i>Clethra alnifolia</i> 'Hummingbird'	Sweet Pepperbush	24"-30" ht.	#2 cont.	24" c.c.
CP		<i>Comptonia peregrina</i>	Sweetfern	24"-30" ht.	#3 cont.	36" c.c.
CS		<i>Cornus sericea</i> 'Kelsey'	Dwarf Dogwood	24"-30" ht.	#3 cont.	36" c.c.
HA		<i>Hamamelis virginiana</i> 'Annabelle'	Smooth Hydrangea	35"-45" ht.	#3 cont.	48" c.c.
HV		<i>Hamamelis virginiana</i> 'Little Suzie'	Dwarf Witchhazel	35"-45" ht.	#5 cont.	48" c.c.
IG		<i>Ilex glabra</i> 'Shamrock'	Irish Yew	35"-45" ht.	#3 cont.	36" c.c.
JP		<i>Juniperus pfitzeriana</i> 'Sea Green'	Sea Green Juniper	35"-45" ht.	#3 cont.	48" c.c.
JVS		<i>Juniperus virginiana</i> 'Grey Owl'	Grey Owl Juniper	24"-30" ht.	#3 cont.	36" c.c.
RA		<i>Rhus aromatica</i> 'Gro-low'	Gro-low Sumac	18"-24" ht.	#2 cont.	24" c.c.
RV		<i>Rhododendron viscosum</i>	Swamp Azalea	35"-45" ht.	#3 cont.	36" c.c.
ST		<i>Spiraea tomentosa</i>	Steeplebush	24"-30" ht.	#2 cont.	24" c.c.
VB		<i>Viburnum nudum</i>	Possumhaw Viburnum	24"-30" ht.	#2 cont.	24" c.c.
Perennials / Ornamental Grasses / Vines						
AM		<i>Amsonia hubrichtii</i>	Hubricht's Bluestar	24"-30" ht.	#2 cont.	24" c.c.

PLANTING AND SOIL NOTES

- IF DISCREPANCIES EXIST BETWEEN THE NUMBER OF PLANTS DRAWN ON THE PLANTING PLAN AND THE NUMBER OF PLANTS IN THE PLANT LIST, THE PLANTING PLAN SHALL GOVERN.
- ALL NEW PLANT MATERIAL SHALL CONFORM TO THE MINIMUM GUIDELINES ESTABLISHED FOR NURSERY STOCK PUBLISHED BY THE AMERICAN ASSOCIATION OF NURSERYMEN, INC. IN ADDITION, ALL NEW PLANT MATERIAL FOR THE PROJECT SHALL BE OF SPECIMEN QUALITY.
- THE LANDSCAPE ARCHITECT SHALL ONLY REVIEW TREES THAT ARE IN THE GROUND AT THE NURSERY. NO PRE-DUG TREES WILL BE ACCEPTED. THEREFORE TIMING OF IN-GROUND REVIEWS MUST BE COORDINATED WITH EXPECTED INSTALLATION DATES.
- ALL NEW PLANTS TO BE BALLED & BURLAPPED OR CONTAINER GROWN, UNLESS OTHERWISE NOTED ON THE PLANT LIST.
- THE CONTRACTOR SHALL SUPPLY ALL NEW PLANT MATERIAL IN QUANTITIES SUFFICIENT TO COMPLETE THE PLANTING SHOWN ON THE DRAWINGS.
- ANY PROPOSED SUBSTITUTIONS OF PLANT SPECIES SHALL BE MADE WITH PLANTS OF EQUIVALENT OVERALL FORM, HEIGHT, BRANCHING HABIT, FLOWER, LEAF, COLOR, FRUIT AND CULTURE, AND ONLY AFTER WRITTEN APPROVAL OF THE LANDSCAPE ARCHITECT.
- ALL NEW PLANTS SHALL BE TAGGED AND APPROVED BY THE LANDSCAPE ARCHITECT AT THE NURSERY PRIOR TO DIGGING OR DELIVERY TO THE SITE.
- CONTRACTOR SHALL LOCATE AND VERIFY ALL EXISTING UTILITY LINES PRIOR TO PLANTING AND SHALL REPORT ANY CONFLICTS TO THE LANDSCAPE ARCHITECT.
- STAKE LOCATION OF ALL PROPOSED PLANTING FOR APPROVAL BY LANDSCAPE ARCHITECT PRIOR TO THE COMMENCEMENT OF PLANTING.
- NEW SHRUBS AND GROUND COVER SHALL BEAR THE SAME RELATIONSHIP TO GRADE AS IT BORE TO PREVIOUS GRADE. TREES SHALL BE SET 3" HIGHER THAN PREVIOUS GRADE. NO TREES SHALL BE PLANTED BEFORE ACCEPTANCE OF ROUGH GRADING.
- ALL PLANT BEDS TO RECEIVE UN-DYED, AGED AND SHREDDED BARK MULCH AS PER SPECIFICATIONS.
- ALL EXISTING TREES TO REMAIN SHALL BE PROPERLY PROTECTED DURING CONSTRUCTION. PROTECTION TECHNIQUES SHALL BE REVIEWED AND APPROVED BY THE LANDSCAPE ARCHITECT.
- PRUNE TREES IN ACCORDANCE WITH THE SPECIFICATIONS.
- ALL PLANT MATERIAL SHALL BE MAINTAINED BY CONTRACTOR UNTIL FINAL ACCEPTANCE AND GUARANTEED FOR 1 CALENDAR YEAR.
- CONFIRM ALL QUANTITIES AGAINST PLANTING PLANS, GRADING PLANS, AND SPECIFICATIONS, INCLUDING SITE DISTURBANCE OUTSIDE OF THE LIMIT OF GRADING NECESSITATED TO FACILITATE CONSTRUCTION.
- WHERE SAND AND GRAVEL ARE SPECIFIED FOR A DRAINAGE LAYER, EXTEND DRAINAGE LAYER TO ASSOCIATED DRAIN LINES, DRAINAGE AREAS, OR DAYLIGHT.
- WHERE ONE SOIL TYPE MEETS ANOTHER SOIL TYPE, FORM A 1:1 SLOPED BOUNDARY TRANSITION.
- WHERE A SOIL PROFILE ENCLOSED WITHIN THE DRIP LINE OF EXISTING TREES, CONSULT WITH LANDSCAPE ARCHITECT PRIOR TO COMMENCING EXCAVATION.
- ALL EXCAVATION AND PLACEMENT OF SOILS WITHIN THE DRIP LINE OF EXISTING TREES TO BE PERFORMED BY HAND.
- SCARIFY SUBGRADE AS SPECIFIED BEFORE PLACEMENT OF ANY PLANTING SOILS.
- DO NOT PLACE OR HANDLE SOILS THAT ARE WET.
- PROTECT ALL EXISTING SOILS AGAINST COMPACTION, CONTAMINATION WITH CONSTRUCTION MATERIALS, AND ALL DISTURBANCE.
- CONTRACTOR IS RESPONSIBLE FOR ACTUAL SITE CONDITIONS, COORDINATION OF SOILS PLACEMENT, AND PLANTING SUBDRAINAGE.
- DO NOT PLACE ANY PLANTING SOIL PRIOR TO INSPECTION BY LANDSCAPE ARCHITECT.
- EXTENTS OF SAND BASED STRUCTURAL SOIL (SBSS) ARE APPROXIMATE. PROVIDE A MINIMUM OF 1,000 C.F. OF SBSS FOR EACH TREE.



CW
D G

Copley Wolff Design Group
Landscape Architects & Planners
www.copleywolff.com

COPLEY WOLFF DESIGN
GROUP
LANDSCAPE ARCHITECTS
10 POST OFFICE SQUARE
BOSTON, MA 02109

PROJECT NAME:

HAGER HOMESTEAD
MASSACHUSETTS COHOUSING

336 KING STREET
LITTLETON, MA 01460

JOB NO. 1904
DRAWN BY: AD
CHECKED BY: JH
DATE: 4/09/20
REVISIONS:

DRAWING NO.
PLANTING & LIGHTING PLAN
L300