

UNIT 1
 FIRST FLOOR: 1,683 S.F. UNIT TOTAL: 2,540 S.F.

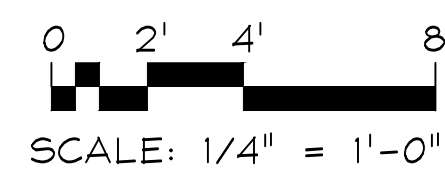
BUILDING TOTAL: 2,628 S.F. 1ST FLR + 1,454 S.F. 2ND FLR = TOTAL: 4,082 S.F.

UNIT 2
 FIRST FLOOR: 942 S.F. UNIT TOTAL: 1,539 S.F.

R O B I N S O N R O A D

HOUSE-BARN FIRST FLOOR PLAN

1/4" = 1'-0" FIRST FLOOR: 1,683 S.F. + 942 S.F. TOTAL: 2,628 S.F.



12 Robinson Road, House-Barn

Littleton, MA

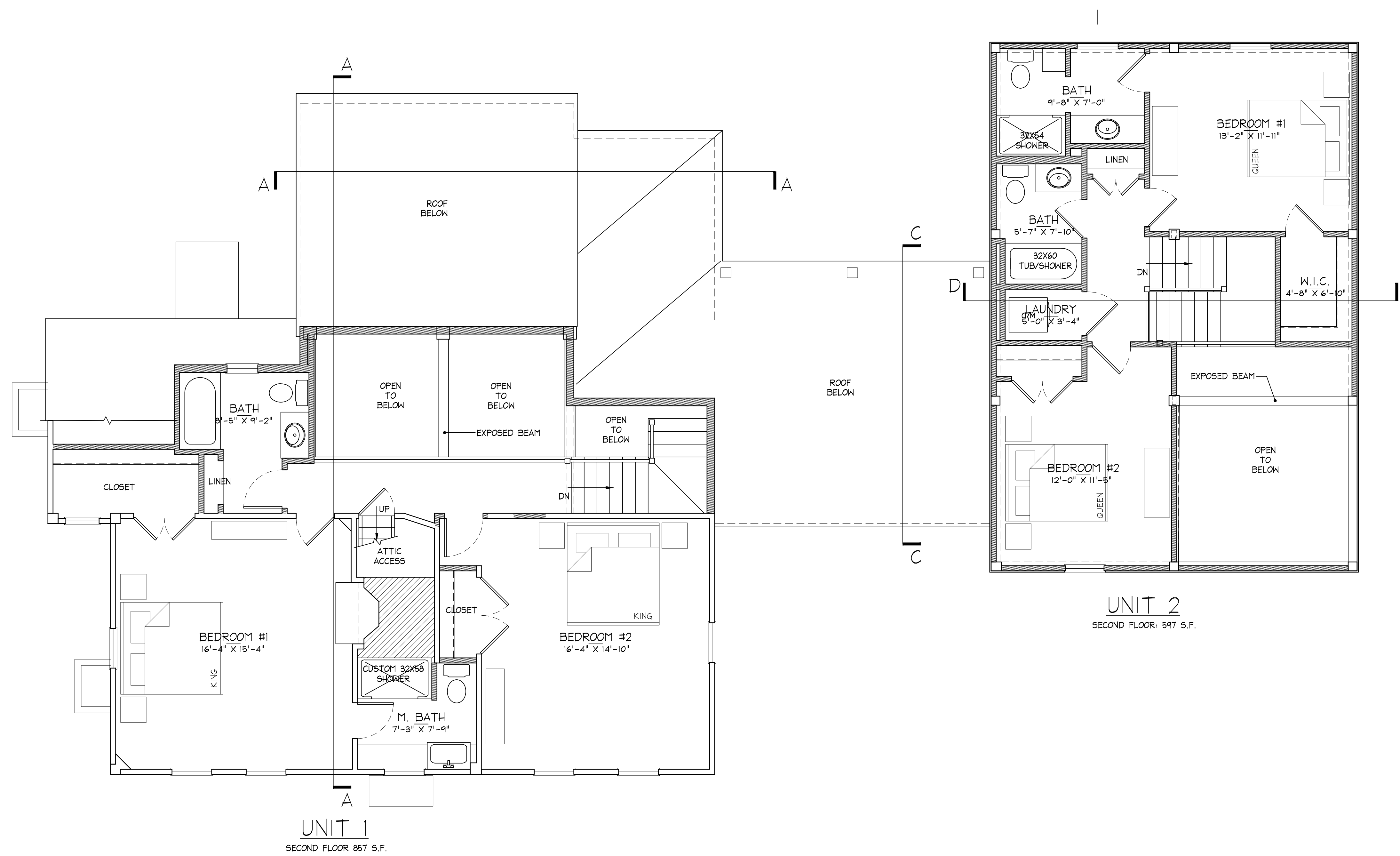
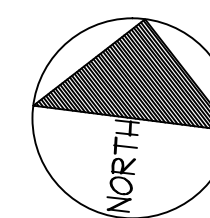
August 16, 2023

The MZO GROUP
 DESIGNERS ■ ARCHITECTS ■ PLANNERS
 IN THE *MIQUELLE* TRADITION

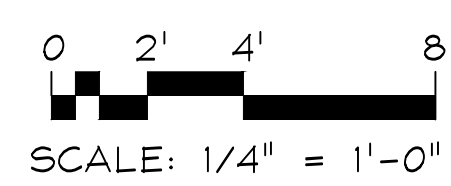
335 Main Street, Suite 201 ■ Stoneham, Massachusetts 02180
 Voice: 781-279-4446 ■ Fax: 781-279-4448 ■ E-Mail: mzo@mzogroup.com ■ www.mzogroup.com

© COPYRIGHT 2023 MZO ARCHITECTURAL GROUP, INC. OWNS THE COPYRIGHT IN THIS DOCUMENT. NO REPRODUCTION OR OTHER USE IS ALLOWED WITHOUT THE EXPRESS WRITTEN CONSENT OF MZO ARCHITECTURAL GROUP, INC.

House - Barn 1 of 5
No Demo



HOUSE-BARN SECOND FLOOR PLAN
 1/4" = 1'-0" SECOND FLOOR: 857 S.F. + 597 S.F. TOTAL: 1,454 S.F.



12 Robinson Road, House-Barn
 Littleton, MA August 16, 2023

The MZO GROUP
 DESIGNERS ■ ARCHITECTS ■ PLANNERS
 IN THE *MIQUELLE* TRADITION

335 Main Street, Suite 201 ■ Stoneham, Massachusetts 02180
 Voice: 781-279-4446 ■ Fax: 781-279-4448 ■ E-Mail: mzo@mzogroup.com ■ www.mzogroup.com

© COPYRIGHT 2023 MZO ARCHITECTURAL GROUP, INC. OWNS THE COPYRIGHT IN THIS DOCUMENT. NO REPRODUCTION OR OTHER USE IS ALLOWED WITHOUT THE EXPRESS WRITTEN CONSENT OF MZO ARCHITECTURAL GROUP, INC.

**House - Barn 2 of 5
 No Demo**