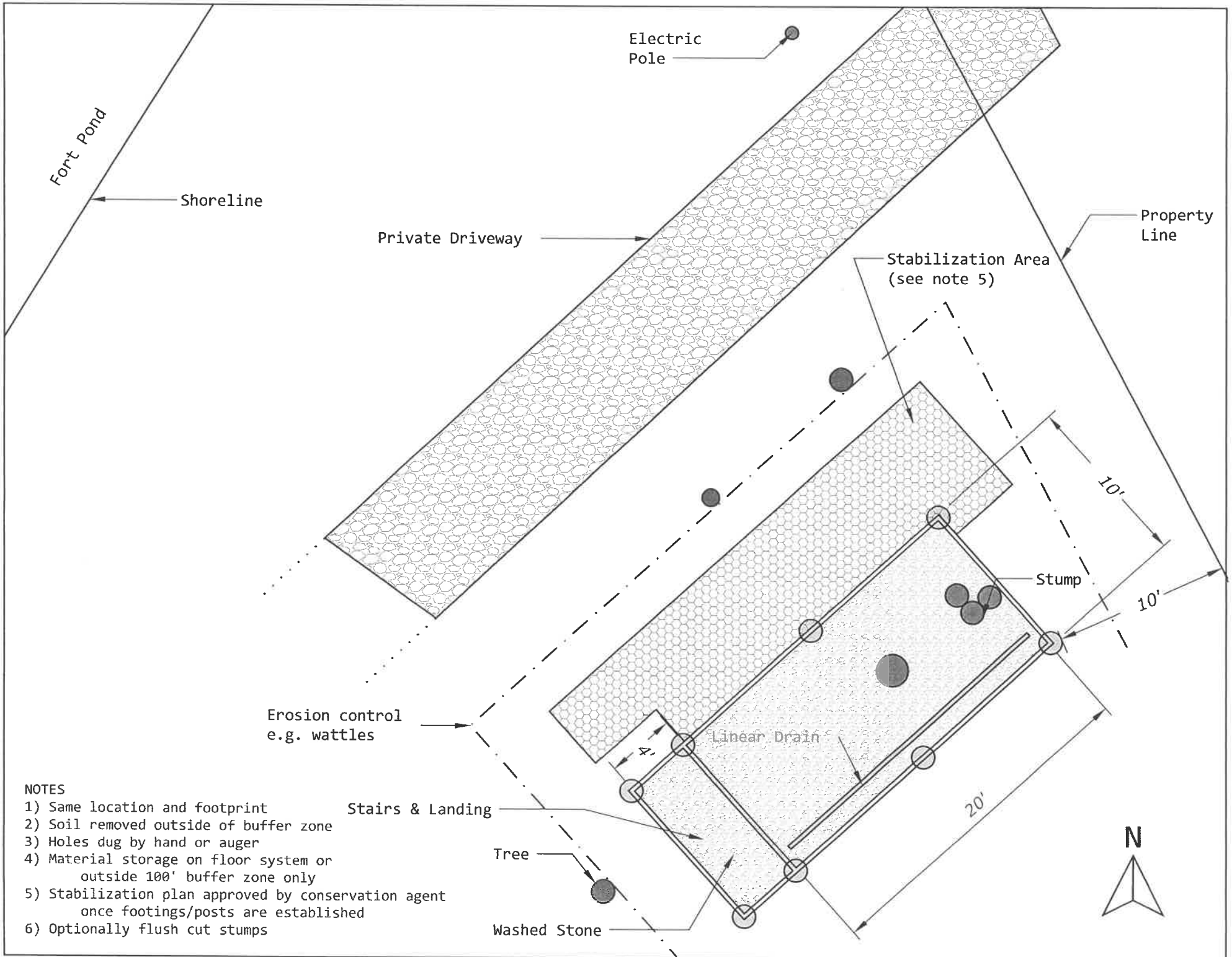


NOTES

- 1) Same location and footprint
- 2) Soil removed outside of buffer zone
- 3) Holes dug by hand or auger
- 4) Material storage on floor system or outside 100' buffer zone only



- NOTES
- 1) Same location and footprint
 - 2) Soil removed outside of buffer zone
 - 3) Holes dug by hand or auger
 - 4) Material storage on floor system or outside 100' buffer zone only
 - 5) Stabilization plan approved by conservation agent once footings/posts are established
 - 6) Optionally flush cut stumps