



## ABBREVIATIONS

EL	ELEVATION	HDPE	HIGH DENSITY POLYETHYLENE
SF	SQUARE FEET	N/F	NOW OR FORMERLY
AC	ACRES	WF	WETLAND FLAG
FT	FEET	TW	TOP OF WALL
BIT	BITUMINOUS	BW	BOTTOM OF WALL
FG	FINISH GRADE	LS	LANDSCAPING
FF	FINISH FLOOR		

DATUM: NAVD 83 B.M. NO.1

1. "PLAN OF LAND IN LITTLETON, MA. PREPARED BY HARLANE TUTTLE, SURVEYOR FOR CHARLES A. HARTWELL JR. PROJECT #792 OF 1972. DATED 6/12/1972. RECORDED AT THE MIDDLESEX SOUTH REGISTRY OF DEEDS ON 6/27/1972. BOOK 12233 PAGE "END".
2. "GARAGE ENLARGEMENT FOUNDATION PLAN, 76 HARTWELL AVENUE, LITTLETON, MA." PREPARED BY BARTLETT HARVEY DESIGN FOR HARTWELL RESIDENCE. DATED 4/18/2025.

ASSESSORS MAP R17, PARCEL 7-D 0.96 ACRES

RECORD OWNER: MARC R. NATHANSON  
TERRI J. NATHANSON  
76 HARTWELL AVENUE  
LITTLETON, MA 01460

1. EXISTING CONDITION INFORMATION BASED ON AN ON-THE-GROUND BOUNDARY AND TOPOGRAPHIC SURVEY PERFORMED BY GOLDSMITH, PREST & RINGWALL, INC. DATED 3/7/2025.
2. EDGE OF WETLAND DELINEATED BY MATTHEW S. MARRO ENVIROMENTAL CONSULTING ON 3/7/2025. WETLAND FLAGS LOCATED BY GOLDSMITH, PREST & RINGWALL, INC. DATED 3/12/2025.

## PART 1 – GENERAL

- A.01 SUMMARY  
1. INSTALL, MAINTAIN, AND PERMANENTLY STABILIZE TEMPORARY AND PERMANENT EROSION AND SEDIMENT CONTROL MEASURES, SUCH AS, BUT NOT NECESSARILY LIMITED TO, STRAW WATTLE AND SILT FENCE BARRIERS, RIPRAP, DIVERSION CHANNELS AND BERMS, CHECK DAMS, STRATEGICALLY LOCATED STOCKPILES, SEDIMENT BASINS, MULCH, AND SEED MIX (HEREINAFTER "CONTROL MEASURES") TO PREVENT EROSION AND SEDIMENTATION OF THE PROJECT SITE, MULCH (200) OR MORE PER ACRE OF THE PROJECT SITE OR INTO ENVIRONMENTALLY SENSITIVE AREAS, OR INTO AREAS WHERE WORK WILL BE ADVERSELY IMPACTED. ENVIRONMENTALLY SENSITIVE AREAS INCLUDE, BUT ARE NOT LIMITED TO, WETLANDS, RIBBON LAKES, DELTAID BUFFER ZONES, INTERMITTENT AND PERENNIAL STREAMS / RIVERS, AND THEIR ATTENDANT BUFFER ZONES.  
2. REFER TO DRAWINGS FOR LOCATION AND DETAILS OF CONTROL MEASURES REQUIRED TO MAINTAIN VEGETATION AND EROSION CONTROL MEASURES. PROVIDE MAINTENANCE ONLY FOR VEGETATION CLEARING. THE DRAWINGS ARE NOT INTENDED TO GRAPHICALLY DEPICT ALL CONTROL MEASURES. THE CONTRACTOR WILL BE RESPONSIBLE FOR THE PROTECTION OF ALL CONTROL MEASURES.  
3. REMOVE AND EMPLOY CONTROL MEASURES THROUGHOUT THE DURATION OF PROJECT, OVER ALL AREAS DISTURBED OR UNDISTURBED BY CONSTRUCTION, AS NECESSARY TO MEET THE REQUIREMENTS DESCRIBED IN 1.01.1.  
4. REMOVE AND EMPLOY TEMPORARY CONTROL MEASURES AS NECESSARY TO MEET THE REQUIREMENTS DESCRIBED IN 1.01.1, WHILE ALLOWING WORK TO PROCEED IN AN EFFICIENT, EFFECTIVE AND PROTECTIVE MANNER.  
5. REMOVE AND EMPLOY TEMPORARY CONTROL MEASURES AS NECESSARY TO MEET THE REQUIREMENTS DESCRIBED IN 1.01.1, WHILE ALLOWING WORK TO PROCEED IN AN EFFICIENT, EFFECTIVE AND PROTECTIVE MANNER.  
6. REMOVE AND EMPLOY TEMPORARY CONTROL MEASURES UNTIL SUCH TIME AS THE ENTIRE SITE IS PERMANENTLY STABILIZED BY ESTABLISHED VEGETATION, FINISH LANDSCAPE MATERIALS, PAVED AREAS, AND/OR OTHER PERMANENT STABILIZATION MEASURES.  
7. ONCE THE SITE IS PERMANENTLY STABILIZED AND CERTIFIED AS SUCH BY ENGINEER, REMOVE TEMPORARY CONTROL MEASURES WHILE PROTECTING STABILIZED SURFACES.
- 1.02 QUALITY ASSURANCE  
A. COMPLY WITH GOVERNING CODES AND REGULATIONS.  
B. MANUFACTURE AND INSTALL PERMANENT EROSION AND SEDIMENT CONTROL MEASURES IN ACCORDANCE WITH MANUFACTURER'S INSTRUCTIONS.  
C. CONFORM TO CONDITIONS OF APPROVAL ISSUED BY REGULATORY AGENCIES INCLUDING, BUT NOT LIMITED TO, U.S. ENVIRONMENTAL PROTECTION AGENCY, U.S. ARMY CORPS OF ENGINEERS, U.S. FISH AND WILDLIFE SERVICE, U.S. GEOLOGICAL SURVEY, U.S. DEPARTMENT OF AGRICULTURE, U.S. DEPARTMENT OF COMMERCE, U.S. DEPARTMENT OF DEFENSE, U.S. DEPARTMENT OF ENERGY, U.S. DEPARTMENT OF HEALTH, PUBLIC WORKS, U.S. DEPARTMENT OF HIGHWAY, STATE ENVIRONMENTAL PROTECTION DEPARTMENT, AND U.S. GOVERNMENT ENVIRONMENTAL PROTECTION AGENCY, WHERE APPLICABLE. THE CONTRACTOR SHALL BE RESPONSIBLE FOR OBTAINING ALL PERMITS CONTAINED HEREIN OR ON THE DRAWINGS, COMPLY WITH THE MORE STRINGENT REQUIREMENT.

A. MATERIALS: 1) 1/2" WHEAT STRAW WITH NATURAL BIO-DEGRADABLE JUTE NETTING, MINIMUM 9-INCH DIAMETER AND 10 FEET LONG. USE 12-INCH OR 20-INCH DIAMETER WATTLIES TO PROTECT LARGE UNSTABLE AREAS.

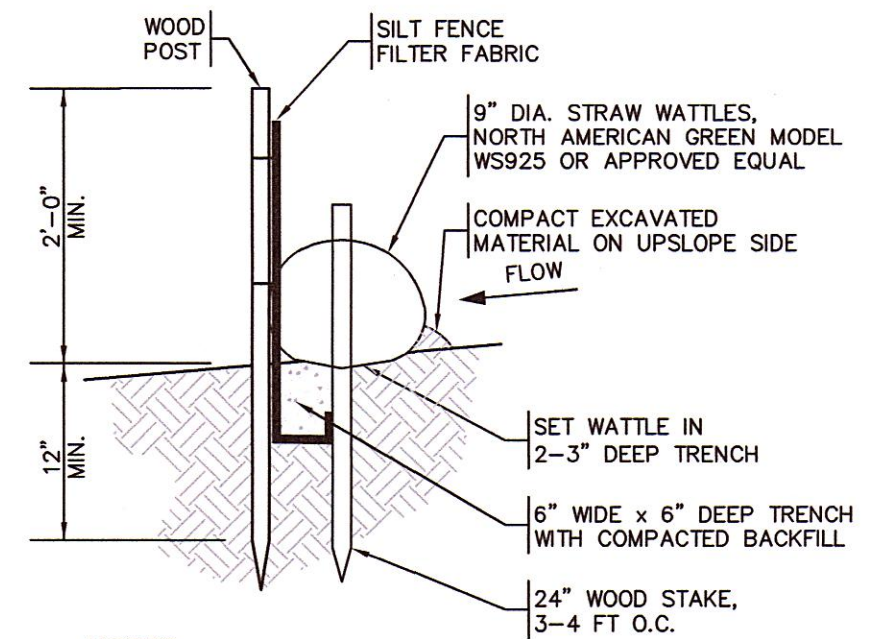
B. SILT FENCE: NON-MOVING, UV-RESISTANT, POLYPROPYLENE FABRIC, FLOW RATED AT 10 GPM/SQ YARD. GRAIN TRENCHES 12" DEEP, MINIMUM 12" WIDE. INTEGRATE STAKE LOGS AND HARDWOOD STAKES. USE NO. 2130 BY AMOCO FABRICS & FIBERS, OR APPROVED EQUAL.

C. MULCH: ORGANICS INCLUDING STRAW, PROCESSED PINE / HEMLOCK TWIGS AND NEEDLES.

D. SEED MIXES: PERENNIAL RYEGRASS, KENTUCKY BLUEGRASS, AND / OR FINE FESCUE, DISEASE RESISTANT. NON-MAINTAINED AREA OPTION ANNUAL RYEGRASS COMBINED WITH MEDIUM RED CLOVER.

- A.3.1 THROUGHOUT CONSTRUCTION  
DEVELOP WORK SEQUENCE SO AS TO LIMIT DRAINAGE AREA THAT IS TRIBUTARY TO DISTURBED AREAS. CONSIDER EROSION CONTROL AND MAINTAIN CONTROL MEASURES SUCH AS DIVERSION CHANNELS AND BERMS, STRATEGICALLY LOCATED STOCKPILES, AND SEDIMENT BASINS TO SUBDIVIDE DRAINAGE AREAS INTO SMALL, MANAGEABLE SUBAREAS, THEREBY MINIMIZING RUNOFF AND THE POTENTIAL FOR EROSION.
- B. MAINTAIN BARRIER AT LIMIT OF WORK AND PROTECT EXISTING VEGETATION / FACILITIES OUTSIDE OF LIMIT OF WORK.
- C. MAINTAIN SPARE MATERIAL STOCKPILES FOR IMMEDIATE EMPLOYMENT / REPAIR / EXPANSION OF CONTROL MEASURES AT A MINIMUM. SUCCEED MATERIALS SHOULD INCLUDE HPA BALES, SILT FENCE AND STAKES, AND CRUSHED STONE.  
INSPECT AND MAINTAIN EFFECTIVENESS OF CONTROL MEASURES BY REPAIRING AS NECESSARY TO EXISTING LIMITS OF WORK. CONSIDER SUPPLEMENTING AS NECESSARY FOR ADEQUATE PROTECTION BY REMOVING TRAPPED PRODUCTS OF EROSION AS NECESSARY TO MAINTAIN EFFECTIVE TRAP VOLUME.
- E. LIMIT EXISTENT OF WORK AREA SO THAT ALL DISTURBED AREAS CAN BE STABILIZED WITH CONTROL MEASURES WITHIN A 24-HOUR PERIOD.
- F. INSTALL CONTROL MEASURES PRIOR TO ANY EARTH DISTURBANCE. EMPLOY TEMPORARY MEASURES AS NECESSARY TO STABILIZE DISTURBED AREAS, EVEN WHERE SUBSEQUENT CONSTRUCTION ACTIVITIES MAY REQUIRE REMOVAL OF SUCH MEASURES.
- G. WHEN INTENSE RAINFALL IS EXPECTED, CONSIDER, DEVISE, AND EMPLOY REINFORCING CONTROL MEASURES PRIOR TO THE RAINFALL EVENT TO MEET THE REQUIREMENTS DESCRIBED IN 1.01.A. IF EXISTING EROSION CONTROL MEASURES ARE NOT SUFFICIENT, CONSIDER MATERIAL STOCKPILES TO COUNTERACT POTENTIAL SEDIMENT TRANSPORT DURING INTENSE RAINFALL.
- H. PROPERLY DISPOSE OF DEBRIS, SOLID WASTE, TRASH, AND CONSTRUCTION WASTE / BYPRODUCTS OFF SITE.
- I. SWEEP OFF-SITE STREETS AS NECESSARY TO PREVENT SILT AND DEBRIS ORIGINATING ON SITE FROM ENTERING CLOSED DRAINAGE SYSTEMS AND / OR ENVIRONMENTALLY SENSITIVE AREAS.

- A. WALK SITE AND IDENTIFY LOCATIONS OF LIMIT OF WORK AND ENVIRONMENTALLY SENSITIVE AREAS.
  - B. ESTABLISH CONSTRUCTION STAGING AREA, LOCATED BEYOND ENVIRONMENTALLY SENSITIVE AREAS.
  - C. INSTALL CONTROL MEASURES AS SHOWN ON THE DRAWINGS, INCLUDING THOSE DESIGNED TO LIMIT OF WORK.
  - D. LIMIT VEHICULAR TRAFFIC TO AND FROM SITE TO MINIMIZE TRANSPORT OF SEDIMENT.
- 3.03 CLEARING, GRUBBING, AND STRIPPING
- A. SOILS, GRUBBING AND STRIPPING TO OCCUR IMMEDIATELY PRIOR TO EARTH DISTURBANCE.
  - B. DEFENDING THE SITE AREA. CONSIDER MULTIPLE GRUBBING PHASES, SEQUENCED TO TAKE ADVANTAGE OF THE EROSION PREVENTION POTENTIAL OF EXISTING VEGETATIVE COVER.
  - C. MINIMIZE THE LOSS OF EXISTING VEGETATION REMOVED WHENEVER POSSIBLE.
  - D. LOCATE TIE-UP STUMPS TO MINIMIZE EROSION POTENTIAL, TAKING ADVANTAGE OF TERRAIN SLOPE AND ASPECT, WHERE APPROPRIATE.
  - E. PROTECT VEGETATION, INCLUDING ROOT SYSTEMS, BEYOND LIMIT OF CLEARING.
  - F. PREPARE SLIPPER, STUMPS, SLASH, AND BRUSH SO AS TO PROTECT ENVIRONMENTALLY SENSITIVE AREAS AND INSTALLED CONTROL MEASURES. PROPERLY DISPOSE OF EXCESS OFF SITE. BURIAL OF STUMPS ON SITE IS PROHIBITED.
- 3.04 EXCAVATION FOR BUILDING FOUNDATIONS AND UTILITIES
- A. DEVISE AND INSTALL CONTROL MEASURES ADEQUATE TO HANDLE DISCHARGES AND TRAP SEDIMENT FROM FLOOD PUMP AND WEIR PUMP LOCATIONS PRIOR TO EXCAVATION.
  - B. ARMOR FLOOD PUMP DISCHARGE LOCATIONS TO PREVENT EROSION AT POINT OF DISCHARGE AND AREAS DOWNSTREAM.
  - C. PREPARE EXCAVATION DISCHARGES GRADE TO DAYLIGHT ON THE LOW SIDE, DEVISE AND INSTALL CONTROL MEASURES TO HANDLE SURFACE AND GROUNDWATER FLOW FROM EXCAVATION LOW POINT.
  - D. STOCKPILE EXCAVATED MATERIAL TO BAFFLE OVERLAND RUNOFF, AVOIDING THE CREATION OF LENGTHY PATHWAYS FOR ACCELERATED RUNOFF.
  - E. BACKFILL UTILITY TRENCHES AS SOON AS PRACTICABLE TO PREVENT FLOODING, SLOUGHING, POTENTIAL OVERFLOW, AND REPETITIVE EARTH DISTURBANCE.
- 3.05 SITE GRADING
- A. WHERE APPLICABLE, FOLLOW EXCAVATION AND FILL PRACTICES SHOWN ON DRAWINGS TO LOCALIZE AND MINIMIZE EROSION.
- 3.06 LANDSCAPING
- A. COMPLETE LANDSCAPING AS SOON AS POSSIBLE AFTER COMPLETION OF FINAL SUBGRADE.
  - B. IMMEDIATELY AFTER PLACEMENT OF TOPSOIL, STABILIZE WITH CONTROL MEASURES INCLUDING, BUT NOT NECESSARILY LIMITED TO, SEED MIX, MULCH, AND / OR BLANKET.
  - C. ALL DISTURBED AREAS UNLESS OTHERWISE NOTED SHALL BE STABILIZED WITH 4" OF LOAM AND SEED.



**NOTES:**

- [1] INSPECT AND REPAIR FENCE AFTER EACH STORM EVENT AND REMOVE SEDIMENT WHEN NECESSARY.
- [2] TRAPPED SEDIMENT SHALL BE REMOVED TO A NON-SENSITIVE UPLAND AREA.

STRAW WATTLE / SILT FENCE BARRIER

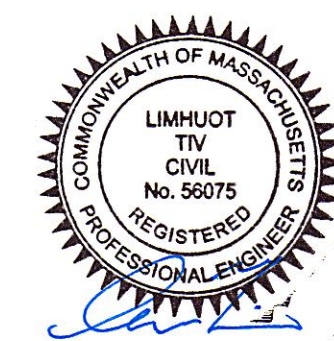
TYPICAL CROSS SECTION  
NOT TO SCALE



OWNER/APPLICANT:

MARC NATHANSON  
76 HARTWELL AVENUE  
LITTLETON, MA 01460

SEAL:



5/12/25

LIMHUOT TIV, P.E.

☐ CONCEPT      ☐ CONSTRUCTION

- ☐ CONCEPT      ☐ CONSTRUCTION

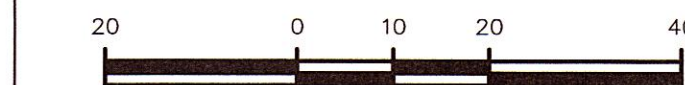
- ☒ PERMIT ☐ CONSTRUCTION RECORD

THIS DRAWING IS NOT INTENDED FOR CONSTRUCTION UNTIL  
ISSUED FOR CONSTRUCTION BY GOLDSMITH, PREST &  
RINGWALL, INC

1.	5/12/2025	FOR PERMITTING

No.	DATE	DESCRIPTION
DESIGNED BY:	JAAB	CHECKED BY: LT

SCALE: 1" = 20'



PROJECT:

RESIDENTIAL DEVELOPMENT  
NOTICE OF INTENT

76 HARTWELL AVENUE  
LITTLETON, MA

## SITE PLAN

DATE:	MAY 2025	SHEET  <b>1</b>
JOB NO.	251011	
SHEET:	1 OF 1	