

1"=1500 FT.±

1"=1500 FT.±

1. EXIS
DATA

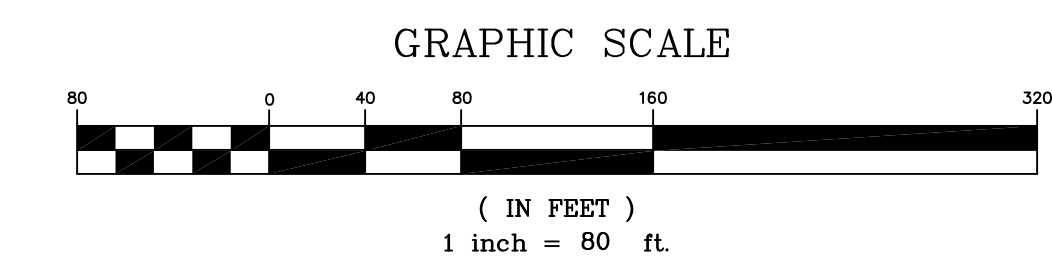
2. WETLAND DELINEATION PROVIDED WAS COMPLETED BY THREE OAKS ENVIRONMENTAL ON FEBRUARY 26, 2025. BOUNDARY SHOWN ON PLAN IS APPROXIMATE AND HAS BEEN VERIFIED BY MCCARTY ENGINEERING INC.
3. THE PROJECT SITE DOES NOT CONTAIN ESTIMATED OR PRIORITY HABITATS BASED ON A REVIEW OF THE MASSACHUSETTS NATURAL HERITAGE ATLAS, 13TH EDITION, AND THE MASS GIS ONLINE MAPPING TOOL.
4. THE LOCATIONS AND ELEVATIONS OF ALL EXISTING UTILITIES SHALL BE CONSIDERED APPROXIMATE AND MUST BE VERIFIED BY THE CONTRACTOR PRIOR TO ANY CONSTRUCTION. ANY UTILITIES AT THE LOCATION OF ANY UTILITIES SHOWN OR ENCOUNTERED DURING CONSTRUCTION SHALL BE REPORTED TO MCCARTY ENGINEERING, INC. AT 978-534-1318.
5. THE CONTRACTOR SHALL CALL "DIG-SAFE" AT 1-888-DIG-SAFE (344-7233) 72 HOURS PRIOR TO CONSTRUCTION TO INFORM THE UTILITY COMPANIES OF ANY EXCAVATION ADJACENT TO EXISTING UTILITIES.
6. UTILITY POLES TO BE REMOVED THAT ARE LOCATED WITHIN THE WOODS / WETLAND RESOURCE AREA (UP#6-#9) SHALL BE CUT AT GRADE AND DRAGGED OUT TO BLOOD ROAD WITH A CABLE. NO LARGE EQUIPMENT WILL BE REQUIRED TO DRIVE WITHIN THE WETLAND RESOURCE AREAS.
7. ANY DISTURBED AREAS RESULTING FROM THE REMOVAL OF THE UTILITY POLES SHALL BE SEEDED WITH NEW ENGLAND ROADSIDE MATRIX UPLAND SEED MIX BY NEW ENGLAND WETLAND PLANTS, INC. AT A RATE OF 1 POUND PER 1,250 SF. THIS SEED PROVIDES A BROAD SPECTRUM OF GRASSES, WILDFLOWERS AND SHRUBS BLENDED TOGETHER AS A NATIVE MATRIX SEED MIX.
8. ALL EXCESS TRENCH SPOILS THAT ARE NOT SUITABLE FOR REUSE WITHIN THE UTILITY TRENCH SHALL BE EXPORTED OFF SITE AND STORED AT LITTLETON ELECTRIC LIGHT AND WATER DEPARTMENT'S UTILITY YARD, OR SHALL BE TEMPORARILY STOCKPILED ON SITE AT THE LOCATION SHOWN ON THIS PLAN. ALL STOCKPILES MUST BE PROTECTED FROM STORMWATER RUN ON/OFF USING TEMPORARY PERIMETER SEDIMENT BARRIERS SUCH AS STRAW WATTLES OR SILT FENCE.

PARCEL ID: R24-1-0
IRVING R MATHESON
FRANK W MATHESON JR
PO BOX 697
LITTLETON, MA 01460

PARCEL ID: R19-8-0
IRVING R MATHESON
FRANK W MATHESON JR
PO BOX 697
LITTLETON, MA 01460

PARCEL ID: R19-9-0
IRVING R MATHESON
FRANK W MATHESON JR
PO BOX 697
LITTLETON, MA 01460

PARCEL ID: U49-3-0
IRVING R MATHESON
FRANK W MATHESON JR
PO BOX 697
LITTLETON, MA 01460



NOT FOR CONSTRUCTION
THESE PLANS WERE PREPARED FOR
THE PURPOSE OF OBTAINING STATE
AND LOCAL PERMITS AND ARE NOT
INTENDED TO BE USED AS
CONSTRUCTION DOCUMENTS.

1	5/23/2025	Response to Comments
No.	Date	Revision



Drawn By: BRM Designed By: BRM Checked By: BRM

McCarty Engineering, Inc.
Civil Engineers
42 Tucker Drive, Leominster, MA 01453
phone:(978) 534-1318 fax: (978) 840-6907
www.mccartyengineering.com

Project Name
Littleton Electric Light
and Water Department
Blood Road
Littleton, MA

Sheet Title
Electric Service
Relocation
Notice of Intent Plan

Job No: 477
File Name: 477P-LELWD
Date: April 16, 2025
Scale: 1"=80'

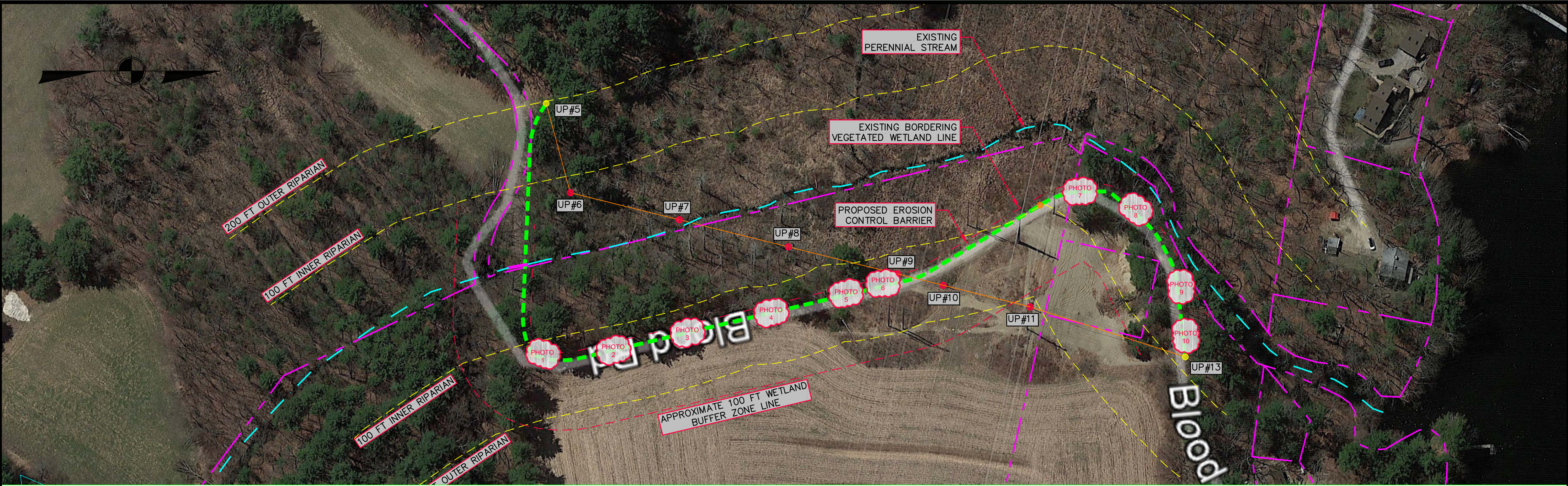


PHOTO 1



PHOTO 2



PHOTO 3



PHOTO 4



PHOTO 5



PHOTO 6



PHOTO 7



PHOTO 8



PHOTO 9



PHOTO 10



LOCUS PLAN
1"=1500 FT.±

- NOTES:
- EXISTING CONDITIONS INFORMATION SHOWN HEREON IS A COMPILATION OF MAGS DATA AND AERIAL IMAGING.
 - WETLAND DELINEATION PROVIDED WAS COMPLETED BY THREE OAKS ENVIRONMENTAL ON FEBRUARY 26, 2025. BOUNDARY SHOWN ON PLAN IS APPROXIMATE AND HAS BEEN VERIFIED BY MCCARTY ENGINEERING INC.
 - THE PROJECT SITE DOES NOT CONTAIN ESTIMATED OR PRIORITY HABITATS BASED ON A REVIEW OF THE MASSACHUSETTS NATURAL HERITAGE ATLAS, 13TH EDITION, AND THE MASS GIS ONLINE MAPPING TOOL.
 - THE TREES TO BE REMOVED WILL BE REPLACED WITH THE SAME SPECIES IN THE SAME APPROXIMATE LOCATION WITH 2" CALIPER TREES. THE PROPOSED TREES WILL BE LOCATED APPROXIMATELY 5'-10' FROM THE ELECTRICAL TRENCH, BETWEEN THE ROAD SHOULDER AND THE PROXIMATE BORDERING VEGETATED WETLAND. THE PROPOSED SHRUBS WILL BE PLACED WITHIN THE WOODED AREA IN PROXIMITY TO THE PROPOSED TRENCH BORDERING THE VEGETATED WETLAND. THE PLANTING LOCATIONS WILL BE REVIEWED AND APPROVED BY THE CONSERVATION AGENT PRIOR TO PLANTING.

TREES TO BE REMOVED:

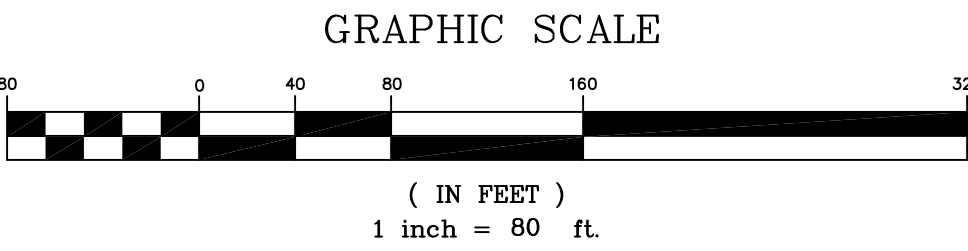
SPECIES	QUANTITY	SIZE
PINE	1	24"
RED OAK	4	8"-12"
BIRCH	7	8"-10"
MAPLE	2	8"-12"

TREES TO BE REPLACED:

SPECIES	QUANTITY	SIZE
PINE	1	2" DBH
RED OAK	4	2" DBH
BIRCH	7	2" DBH
MAPLE	2	2" DBH

SHRUBS TO BE REPLACED:

SPECIES	QUANTITY	SIZE
HIGH BUSH BLUEBERRY	14	#2 POT
WITCH HAZEL	14	#2 POT



NOT FOR CONSTRUCTION
THESE PLANS WERE PREPARED FOR THE PURPOSE OF OBTAINING STATE AND LOCAL PERMITS AND ARE NOT INTENDED TO BE USED AS CONSTRUCTION DOCUMENTS.

1	5/23/2025	Response to Comments
No.	Date	Revision



5/23/2025
Drawn By: BRM
Designed By: BRM
Checked By: BRM

McCarty Engineering, Inc.
Civil Engineers
42 Tucker Drive, Leominster, MA 01453
phone:(978) 534-1318 fax: (978) 840-6907
www.mccartyengineering.com
Project Name
Littleton Electric Light and Water Department
Blood Road
Littleton, MA
Sheet Title
Electric Service Relocation
Tree Removal Plan

Job No: 477
File Name: 477P-NOI02
Date: April 16, 2025
Scale: 1"=80'
Sheet No.
2